



MLS 6782350 Lake Land

**\$179,900**

**Description:**

Incredible opportunity to own a lake lot on Bad Axe Lake in Hubbard County!! This lot is 5 acres and features 309' of lake frontage!! This lot features a good mixture of trees, beautiful views of Bad Axe Lake, lots of wildlife and nature to enjoy and is conveniently located to several other lakes, snowmobile trails, ATV trails and many other recreational activities!! Don't miss out on this incredible opportunity to build your cabin or dream lake home on Bad Axe Lake!! Additional lots available!!

**Additional Details:**

Lot Acres	5
Lot Dimensions	309x750x309x758
School District	309
Taxes	(unreported)
Taxes with Assessments	(unreported)
Tax Year	2025

**Additional Features:**

**Driving Directions:**

From the intersection of County Road 4 and County Road 24 go East on County Road 24 to a left onto County Road 104 (Jewel Drive) to the property on the left (look for fire # 20250) follow into the lots, each lot is marked with a for sale sign.



Listed By:  
Edina Realty, Inc.

Affinity Real Estate Inc. participates in the Regional Multiple Listing Service of Minnesota, Inc Broker Reciprocity (sm) program, allowing us to display other broker's listings on our website. All properties are subject to prior sale, change or withdrawal.



**Call Affinity Real Estate**

**218-237-3333**

**info@affinityrealestate.com**



**Affinity Real Estate - 600 Park Avenue South - Park Rapids MN 56470**





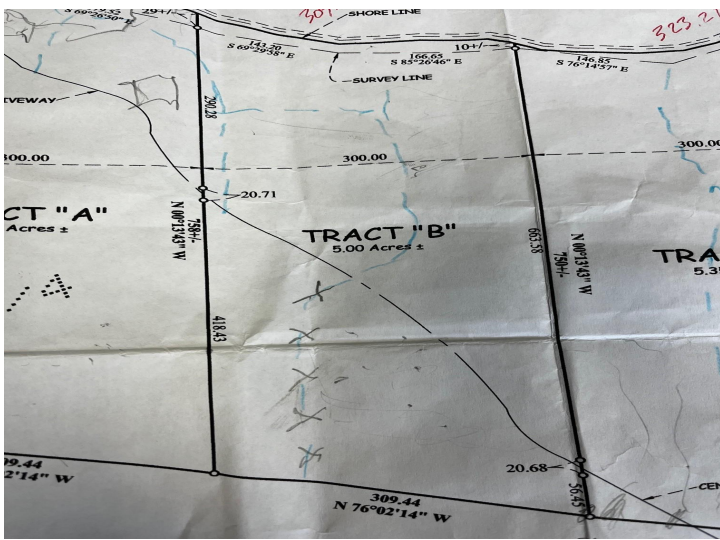
website: [www.AffinityRealEstate.com](http://www.AffinityRealEstate.com) | email: [info@affinityrealestate.com](mailto:info@affinityrealestate.com) | office: 218-237-3333 | fax: 218-237-3377



**\$179,900**

MLS 6782350 Lake Land  
Tract B Jewel Drive  
Park Rapids MN 56470





website: [www.AffinityRealEstate.com](http://www.AffinityRealEstate.com) | email: [info@affinityrealestate.com](mailto:info@affinityrealestate.com) | office: 218-237-3333 | fax: 218-237-3377



**\$179,900**  
 MLS 6782350 Lake Land  
 Tract B Jewel Drive  
 Park Rapids MN 56470





website: [www.AffinityRealEstate.com](http://www.AffinityRealEstate.com) | email: [info@affinityrealestate.com](mailto:info@affinityrealestate.com) | office: 218-237-3333 | fax:218-237-3377



**\$179,900**  
MLS 6782350 Lake Land  
Tract B Jewel Drive  
Park Rapids MN 56470



website: [www.AffinityRealEstate.com](http://www.AffinityRealEstate.com) | email: [info@affinityrealestate.com](mailto:info@affinityrealestate.com) | office: 218-237-3333 | fax:218-237-3377



**\$179,900**

MLS 6782350 Lake Land  
Tract B Jewel Drive  
Park Rapids MN 56470



website: [www.AffinityRealEstate.com](http://www.AffinityRealEstate.com) | email: [info@affinityrealestate.com](mailto:info@affinityrealestate.com) | office: 218-237-3333 | fax:218-237-3377



**\$179,900**

MLS 6782350 Lake Land  
Tract B Jewel Drive  
Park Rapids MN 56470



website: [www.AffinityRealEstate.com](http://www.AffinityRealEstate.com) | email: [info@affinityrealestate.com](mailto:info@affinityrealestate.com) | office: 218-237-3333 | fax:218-237-3377



**\$179,900**

MLS 6782350 Lake Land  
Tract B Jewel Drive  
Park Rapids MN 56470



website: [www.AffinityRealEstate.com](http://www.AffinityRealEstate.com) | email: [info@affinityrealestate.com](mailto:info@affinityrealestate.com) | office: 218-237-3333 | fax:218-237-3377



**\$179,900**

MLS 6782350 Lake Land  
Tract B Jewel Drive  
Park Rapids MN 56470