



MLS 6782377 Residential

\$319,000

1,862 sq ft
3 bedrooms
3 baths

1305 Madison Avenue
Wadena MN 56482

Status: Active

Description:

Amazing opportunity for a one owner magnificently designed and built custom home. Convenient one level living with the wonderful use of large basement for additional space. Great location on edge of Wadena with the luxury of Otter tail county taxes. Located on a nice double corner lot so you will have plenty of space for gardening, flowers or just room for the family to roam. 3 bedroom 3 bathroom home with 3 stall attached, finished and heated garage with workshop. Large basement that is easily accessible and could be totally finished if desired. Need more bedrooms? addition of egress window in basement will solve that. Main level boast gorgeous hickory hardwood floors, beautiful tile work, vaulted ceiling, custom cabinets, walk in tile shower in primary bedroom and an awesome attached 3-4 season porch that will make for some wonderful relaxation time. This home is truly a well taken care of gem.

Additional Details:

Year Built	2006
Lot Acres	0.41
Lot Dimensions	150 x 220
Garage Stalls	3
School District	2155
Taxes	\$2,128
Taxes with Assessments	\$2,128
Tax Year	2025

Additional Features:

Basement: Concrete, Partially Finished **Fuel:** Electric, Propane **Garage:** 3 **Heat:** Dual, Forced Air **Sewer:** Private Sewer, Tank with Drainage Field
Water: Private, Sand Point **Air Conditioning:** Central Air

Driving Directions:

Jefferson St to Irving Sw to 11th street SW to Madison Ave SW



Listed By:
Hinkle Realty

Affinity Real Estate Inc. participates in the Regional Multiple Listing Service of Minnesota, Inc Broker Reciprocity (sm) program, allowing us to display other broker's listings on our website. All properties are subject to prior sale, change or withdrawal.



Call Affinity Real Estate

218-237-3333

info@affinityrealestate.com



Affinity Real Estate - 600 Park Avenue South - Park Rapids MN 56470



website: www.AffinityRealEstate.com | email: info@affinityrealestate.com | office: 218-237-3333 | fax: 218-237-3377

Affinity
REAL ESTATE INC

\$319,000
MLS 6782377 Residential
1305 Madison Avenue
Wadena MN 56482



website: www.AffinityRealEstate.com | email: info@affinityrealestate.com | office: 218-237-3333 | fax: 218-237-3377

Affinity
REAL ESTATE INC

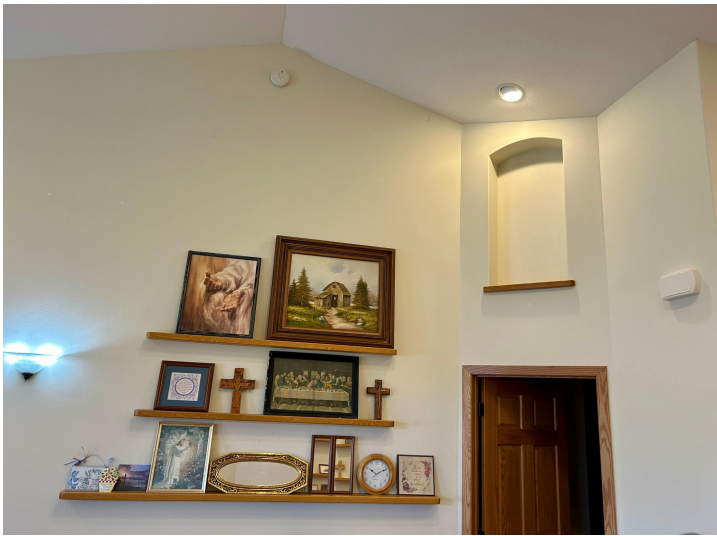
\$319,000
MLS 6782377 Residential
1305 Madison Avenue
Wadena MN 56482



website: www.AffinityRealEstate.com | email: info@affinityrealestate.com | office: 218-237-3333 | fax: 218-237-3377

Affinity
REAL ESTATE INC

\$319,000
MLS 6782377 Residential
1305 Madison Avenue
Wadena MN 56482



website: www.AffinityRealEstate.com | email: info@affinityrealestate.com | office: 218-237-3333 | fax: 218-237-3377

Affinity
REAL ESTATE INC

\$319,000
MLS 6782377 Residential
1305 Madison Avenue
Wadena MN 56482



website: www.AffinityRealEstate.com | email: info@affinityrealestate.com | office: 218-237-3333 | fax: 218-237-3377

Affinity
REAL ESTATE INC

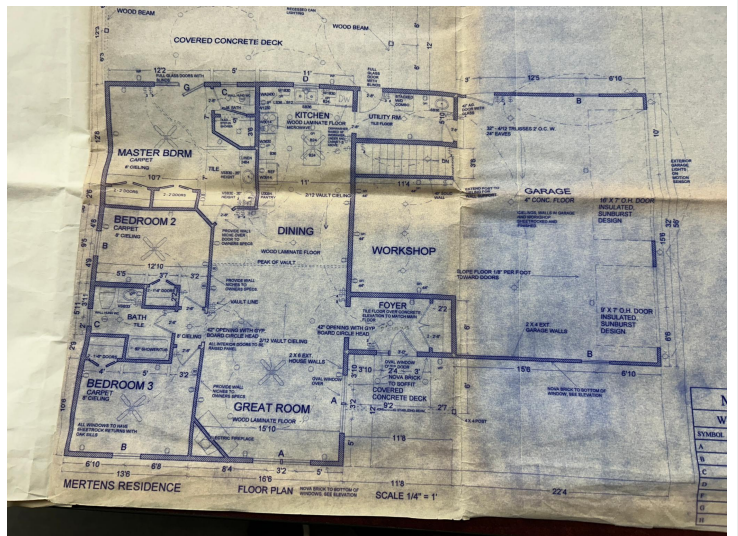
\$319,000
MLS 6782377 Residential
1305 Madison Avenue
Wadena MN 56482



website: www.AffinityRealEstate.com | email: info@affinityrealestate.com | office: 218-237-3333 | fax: 218-237-3377

Affinity
REAL ESTATE INC

\$319,000
MLS 6782377 Residential
1305 Madison Avenue
Wadena MN 56482



website: www.AffinityRealEstate.com | email: info@affinityrealestate.com | office: 218-237-3333 | fax:218-237-3377



\$319,000
 MLS 6782377 Residential
 1305 Madison Avenue
 Wadena MN 56482