



MLS 6782656 Residential

\$385,000

3,304 sq ft
5 bedrooms
4 baths

18505 County Road 1
Emily MN 56447

Status: Active

Description:

Nestled among towering oaks and pines, Miss Sweet Emily offers 3,300+ sq. ft. of warmth and character with 5 bedrooms, 4 baths, a grand stone fireplace, chef's kitchen, and a bright walkout basement with family room, dry bar, and second kitchen, all set on a serene wooded property with trails, workshops, and space to truly call home.

Additional Details:

Year Built	1996
Lot Acres	9.94
Lot Dimensions	330x1315x330x1315
Garage Stalls	3
School District	182
Taxes	\$2,389
Taxes with Assessments	\$2,414
Tax Year	2025

Additional Features:

Basement: Block, Egress Window(s), Finished, Partially Finished, Walkout **Fuel:** Electric, Propane **Garage:** 3 **Heat:** Baseboard, Boiler, Fireplace(s)
Sewer: Private Sewer, Septic System Compliant - Yes, Tank with Drainage Field **Water:** Submersible - 4 Inch, Drilled, Private, Well **Air Conditioning:** None

Driving Directions:

From County Rd 3 in Crosslake go up to County Rd 1, go East approximately 6 miles to address.



Listed By:
RE/MAX Results - Crosslake

Affinity Real Estate Inc. participates in the Regional Multiple Listing Service of Minnesota, Inc Broker Reciprocity (sm) program, allowing us to display other broker's listings on our website. All properties are subject to prior sale, change or withdrawal.



Call Affinity Real Estate

218-237-3333

info@affinityrealestate.com



Affinity Real Estate - 600 Park Avenue South - Park Rapids MN 56470



website: www.AffinityRealEstate.com | email: info@affinityrealestate.com | office: 218-237-3333 | fax: 218-237-3377



\$385,000
 MLS 6782656 Residential
 18505 County Road 1
 Emily MN 56447



website: www.AffinityRealEstate.com | email: info@affinityrealestate.com | office: 218-237-3333 | fax: 218-237-3377

Affinity
REAL ESTATE INC

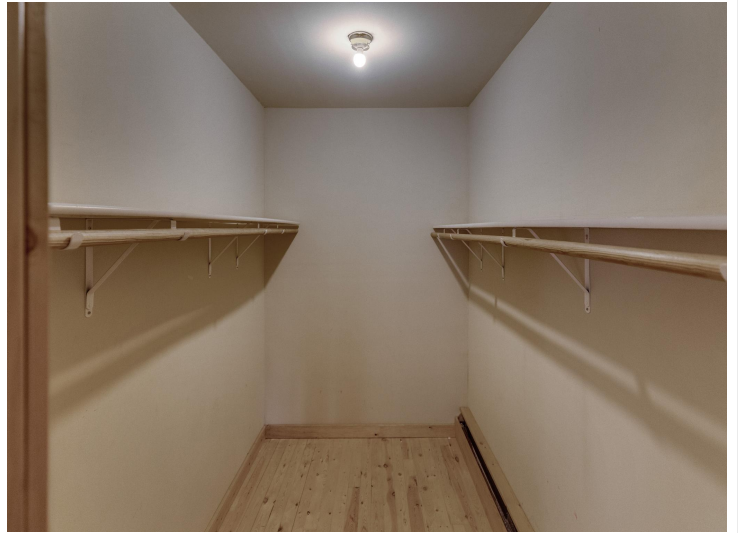
\$385,000
MLS 6782656 Residential
18505 County Road 1
Emily MN 56447



website: www.AffinityRealEstate.com | email: info@affinityrealestate.com | office: 218-237-3333 | fax: 218-237-3377



\$385,000
 MLS 6782656 Residential
 18505 County Road 1
 Emily MN 56447



website: www.AffinityRealEstate.com | email: info@affinityrealestate.com | office: 218-237-3333 | fax: 218-237-3377



\$385,000
 MLS 6782656 Residential
 18505 County Road 1
 Emily MN 56447



website: www.AffinityRealEstate.com | email: info@affinityrealestate.com | office: 218-237-3333 | fax: 218-237-3377

Affinity
REAL ESTATE INC

\$385,000
MLS 6782656 Residential
18505 County Road 1
Emily MN 56447



website: www.AffinityRealEstate.com | email: info@affinityrealestate.com | office: 218-237-3333 | fax: 218-237-3377

Affinity
REAL ESTATE INC

\$385,000
MLS 6782656 Residential
18505 County Road 1
Emily MN 56447



website: www.AffinityRealEstate.com | email: info@affinityrealestate.com | office: 218-237-3333 | fax: 218-237-3377

Affinity
REAL ESTATE INC

\$385,000
MLS 6782656 Residential
18505 County Road 1
Emily MN 56447



website: www.AffinityRealEstate.com | email: info@affinityrealestate.com | office: 218-237-3333 | fax: 218-237-3377



\$385,000
MLS 6782656 Residential
18505 County Road 1
Emily MN 56447