



MLS 6782719 Residential

\$329,900

1,232 sq ft
2 bedrooms
2 baths

34306 Twin Island Lane
Dent MN 56528

Status: Active

Description:

This home is nestled amidst the serene landscapes of McDonald Lake, experience the beauty of nature and great views. The natural shoreline and a private space for having bonfires add to the ambiance of the property. McDonald lake provides endless opportunities for relaxation and a sandbar between McDonald and Big McDonald to gather for lake fun. This 2 bedroom, 2 bathroom home sits on 2.5 acres. New updates include 40x32 Pole Building, spray foam insulation, 10' sidewalls, Landscaping (retaining wall), propane free standing stove/fireplace, water softener, updated electrical for off peak system. Exterior of home freshly painted. Plenty of room to roam.

Additional Details:

Year Built	1978
Lot Acres	2.52
Lot Dimensions	irregular
Garage Stalls	3
School District	1955
Taxes	\$1,555
Taxes with Assessments	\$1,644
Tax Year	2025

Additional Features:

Basement: Crawl Space, Concrete **Fuel:** Array **Garage:** 3 **Heat:** Forced Air **Sewer:** Septic System Compliant - Yes **Water:** Well **Air Conditioning:** Central Air

Driving Directions:

From 108 go North on Engstrom Beach Rd and follow the signs.



Listed By:
Trilogy Real Estate

Affinity Real Estate Inc. participates in the Regional Multiple Listing Service of Minnesota, Inc Broker Reciprocity (sm) program, allowing us to display other broker's listings on our website. All properties are subject to prior sale, change or withdrawal.



Call Affinity Real Estate

218-237-3333

info@affinityrealestate.com



Affinity Real Estate - 600 Park Avenue South - Park Rapids MN 56470



website: www.AffinityRealEstate.com | email: info@affinityrealestate.com | office: 218-237-3333 | fax:218-237-3377



\$329,900
MLS 6782719 Residential
34306 Twin Island Lane
Dent MN 56528



website: www.AffinityRealEstate.com | email: info@affinityrealestate.com | office: 218-237-3333 | fax: 218-237-3377

Affinity
REAL ESTATE INC

\$329,900
MLS 6782719 Residential
34306 Twin Island Lane
Dent MN 56528



website: www.AffinityRealEstate.com | email: info@affinityrealestate.com | office: 218-237-3333 | fax: 218-237-3377

Affinity
REAL ESTATE INC

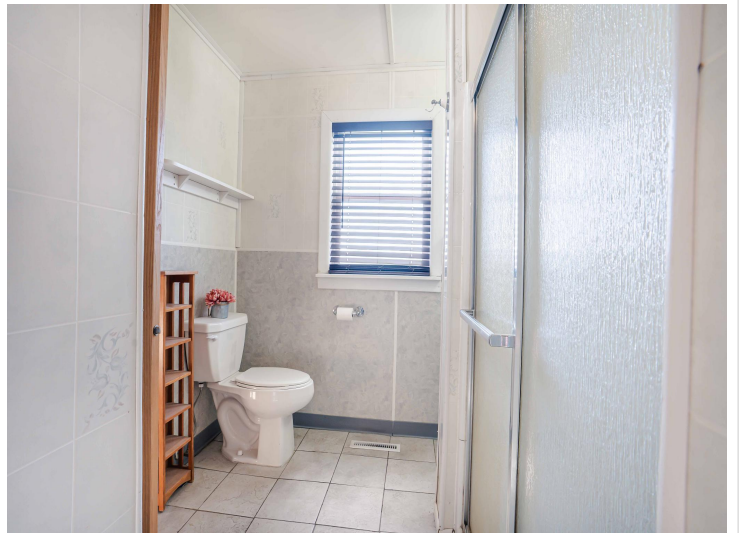
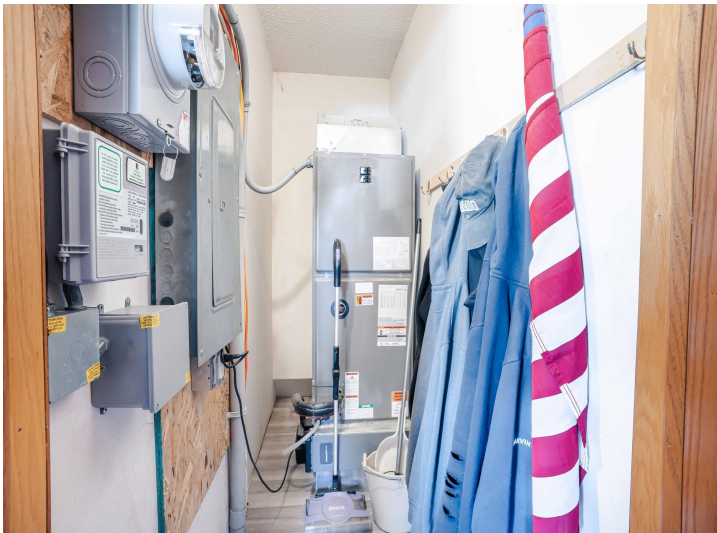
\$329,900
MLS 6782719 Residential
34306 Twin Island Lane
Dent MN 56528



website: www.AffinityRealEstate.com | email: info@affinityrealestate.com | office: 218-237-3333 | fax:218-237-3377

Affinity
REAL ESTATE INC

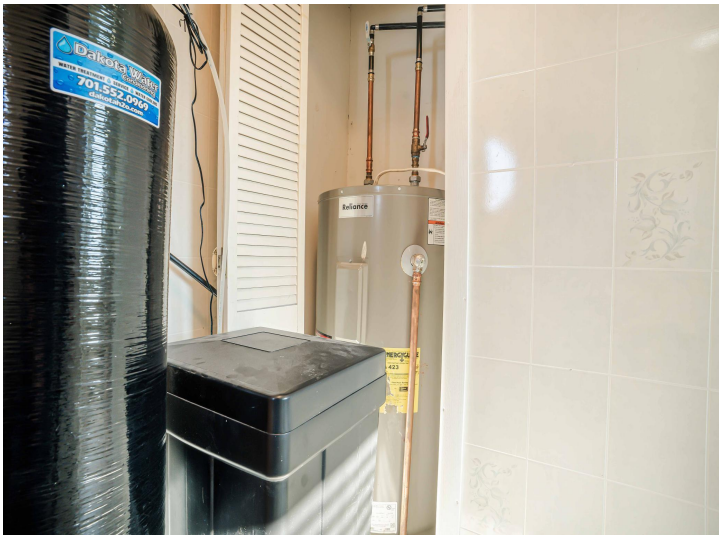
\$329,900
MLS 6782719 Residential
34306 Twin Island Lane
Dent MN 56528



website: www.AffinityRealEstate.com | email: info@affinityrealestate.com | office: 218-237-3333 | fax:218-237-3377



\$329,900
MLS 6782719 Residential
34306 Twin Island Lane
Dent MN 56528



website: www.AffinityRealEstate.com | email: info@affinityrealestate.com | office: 218-237-3333 | fax: 218-237-3377



\$329,900
MLS 6782719 Residential
34306 Twin Island Lane
Dent MN 56528

website: www.AffinityRealEstate.com | email: info@affinityrealestate.com | office: 218-237-3333 | fax:218-237-3377



\$329,900
MLS 6782719 Residential
34306 Twin Island Lane
Dent MN 56528