



MLS 6782844 Lake Home

\$679,000

1,512 sq ft
3 bedrooms
2 baths

46520 Poss Beach Road
Pelican Rapids MN 56572

Waterfront: Lizzie Lake

Status: Active

Description:

Lake Lizzie Lakefront – 150 Ft of Shoreline on Nearly 1 Acre.

Welcome to your lake retreat on beautiful Lake Lizzie! This 3-bedroom, 2-bathroom home is nestled on .92 acres with 150 feet of shoreline (approx.), offering the perfect balance of privacy, space, and stunning lake views.

The property is surrounded by mature trees that provide natural shade and a sense of seclusion. Two maintenance-free decks—one on the lakeside of the home and positioned halfway down the hill create ideal spaces for relaxing, entertaining, or simply taking in the peaceful setting. A lakeside firepit completes the outdoor experience, perfect for evenings gathered with family and friends.


Inside, the home offers a functional layout with three comfortable bedrooms, each with a walk-in closet and two full bathrooms, making it a great fit for both year-round living and weekend getaways. Large windows invite in natural light and frame picturesque views of the lake and the evening sunsets. The kitchen and living spaces are designed for ease and comfort, offering plenty of room to host and unwind after a day on the water.

With public access just 0.6 miles away, launching your water toys will be a breeze.

With nearly an acre of land, shaded privacy, and a generous stretch of shoreline, this property provides both relaxation and recreation in one of the area's most sought-after lake destinations. Call to schedule a showing today!

Additional Details:

Year Built	2006
Lot Acres	0.92
Lot Dimensions	150 x 270
School District	548
Taxes	\$4,034
Taxes with Assessments	\$4,034
Tax Year	2025

 Listed By:
Park Co., REALTORS®
Affinity Real Estate Inc. participates in the Regional Multiple Listing Service of Minnesota, Inc Broker Reciprocity (sm) program, allowing us to display other broker's listings on our website. All properties are subject to prior sale, change or withdrawal.



Call Affinity Real Estate

218-237-3333

Info@affinityrealestate.com



Affinity Real Estate - 600 Park Avenue South - Park Rapids MN 56470



website: www.AffinityRealEstate.com | email: info@affinityrealestate.com | office: 218-237-3333 | fax: 218-237-3377



\$679,000
 MLS 6782844 Lake Home
 46520 Poss Beach Road
 Pelican Rapids MN 56572



website: www.AffinityRealEstate.com | email: info@affinityrealestate.com | office: 218-237-3333 | fax: 218-237-3377

Affinity
REAL ESTATE INC

\$679,000
MLS 6782844 Lake Home
46520 Poss Beach Road
Pelican Rapids MN 56572



website: www.AffinityRealEstate.com | email: info@affinityrealestate.com | office: 218-237-3333 | fax: 218-237-3377



\$679,000
MLS 6782844 Lake Home
46520 Poss Beach Road
Pelican Rapids MN 56572



website: www.AffinityRealEstate.com | email: info@affinityrealestate.com | office: 218-237-3333 | fax: 218-237-3377



\$679,000
 MLS 6782844 Lake Home
 46520 Poss Beach Road
 Pelican Rapids MN 56572



website: www.AffinityRealEstate.com | email: info@affinityrealestate.com | office: 218-237-3333 | fax: 218-237-3377



\$679,000
MLS 6782844 Lake Home
46520 Poss Beach Road
Pelican Rapids MN 56572

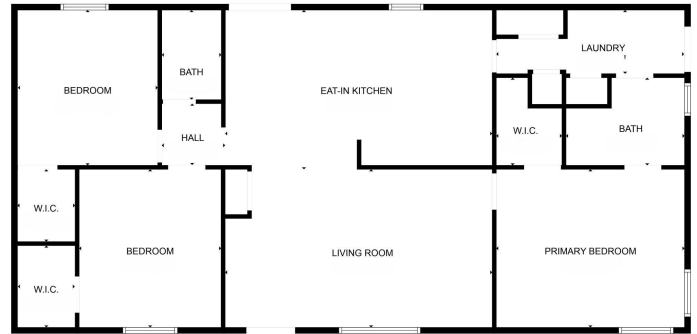


website: www.AffinityRealEstate.com | email: info@affinityrealestate.com | office: 218-237-3333 | fax: 218-237-3377

Affinity
REAL ESTATE INC

\$679,000

MLS 6782844 Lake Home
46520 Poss Beach Road
Pelican Rapids MN 56572



FLOOR PLAN CREATED BY CURBCASA APP. MEASUREMENTS DEEMED HIGHLY RELIABLE BUT NOT GUARANTEED.

website: www.AffinityRealEstate.com | email: info@affinityrealestate.com | office: 218-237-3333 | fax: 218-237-3377



\$679,000

MLS 6782844 Lake Home
46520 Poss Beach Road
Pelican Rapids MN 56572