



MLS 6783147 Lake Home

\$799,000

2,726 sq ft
3 bedrooms
3 baths

34221 Shore Drive
Crosslake MN 56442

Waterfront: Duck Lake (18031400)

Status: Hold

Description:

Welcome to your dream lake home! This stunning custom-built 3-bedroom, 3-bathroom home with lakefront living. The open floor plan flows seamlessly from spacious living room to the dining area and kitchen, creating the perfect space for entertaining or family gatherings. Enjoy the warmth and charm of two wood burning fireplaces, offering cozy comfort in both living room and lower-level family room. The kitchen features ample cabinetry, modern appliances, and expansive counter space. The primary suite offers a private retreat with spacious layout and en-suite bath, 3bdrm+den, year round living. This property includes a new 30x40 pole shed, 14ft doors with 20x14 workshop, perfect for storing vehicles, equipment, or recreational toys. Step outside to lake views and enjoy endless opportunities for boating, fishing and outdoor fun right from your backyard with your own private access to lake. This property is conveniently located within walking distance to public access to the Whitefish Chain, and connected to the Crosslake bike trail system. This is a rare opportunity to enjoy both functionality and prime location!

Additional Details:

Year Built	1994
Lot Acres	1.43
Lot Dimensions	135x379x246x331
Garage Stalls	6
School District	186
Taxes	\$3,506
Taxes with Assessments	\$3,506
Tax Year	2024

Additional Features:

Basement: Full, Walkout **Fuel:** Electric, Natural Gas, Wood **Garage:** 6 **Heat:** Baseboard, Forced Air, Fireplace(s) **Sewer:** Septic System
Compliant - Yes, Tank with Drainage Field **Water:** Drilled, Well **Air Conditioning:** Central Air

Driving Directions:

S of Cross Lake to West on 103 to RT on West Shore Dr.



Listed By:
NextHome Horizons

Affinity Real Estate Inc. participates in the Regional Multiple Listing Service of Minnesota, Inc Broker Reciprocity (sm) program, allowing us to display other broker's listings on our website. All properties are subject to prior sale, change or withdrawal.



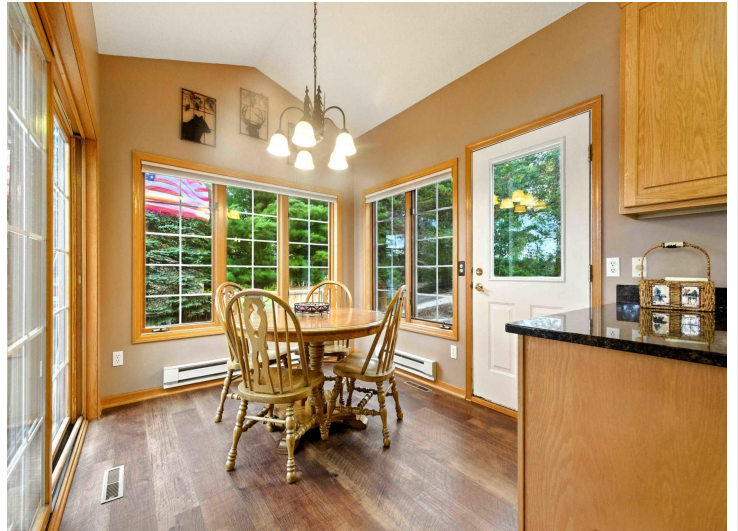
Call Affinity Real Estate

218-237-3333

info@affinityrealestate.com



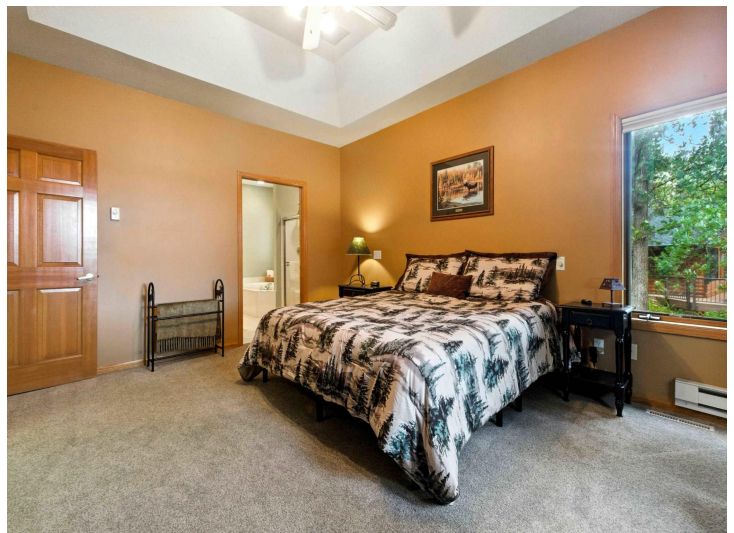
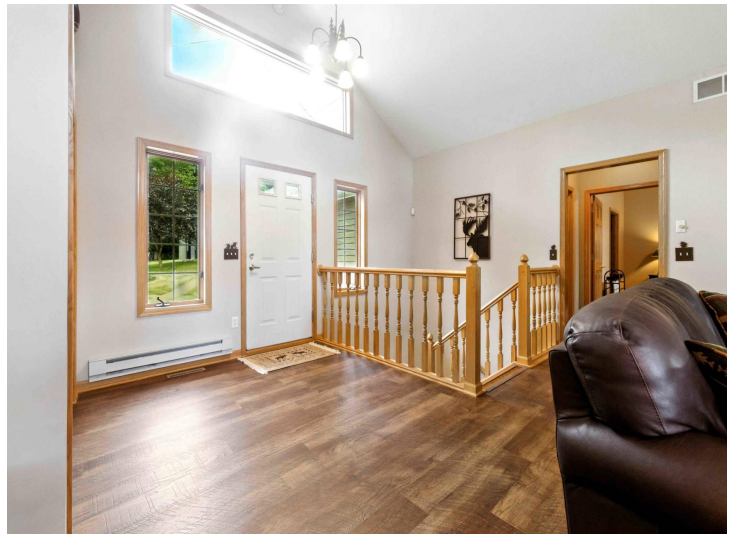
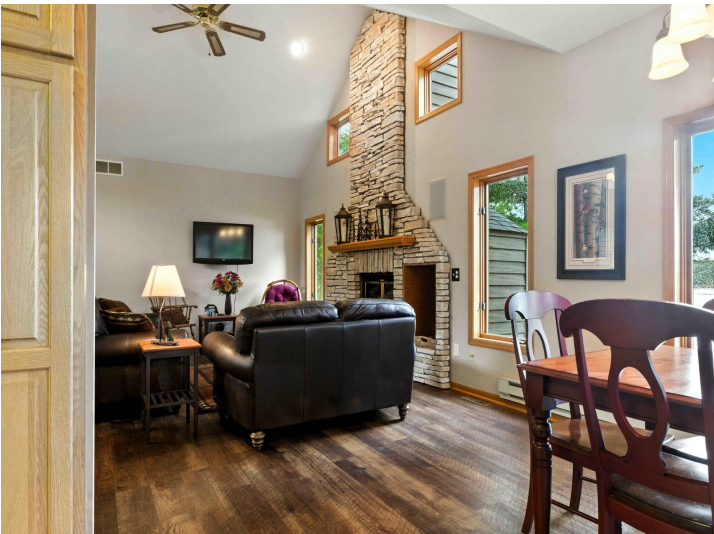
Affinity Real Estate - 600 Park Avenue South - Park Rapids MN 56470



website: www.AffinityRealEstate.com | email: info@affinityrealestate.com | office: 218-237-3333 | fax: 218-237-3377



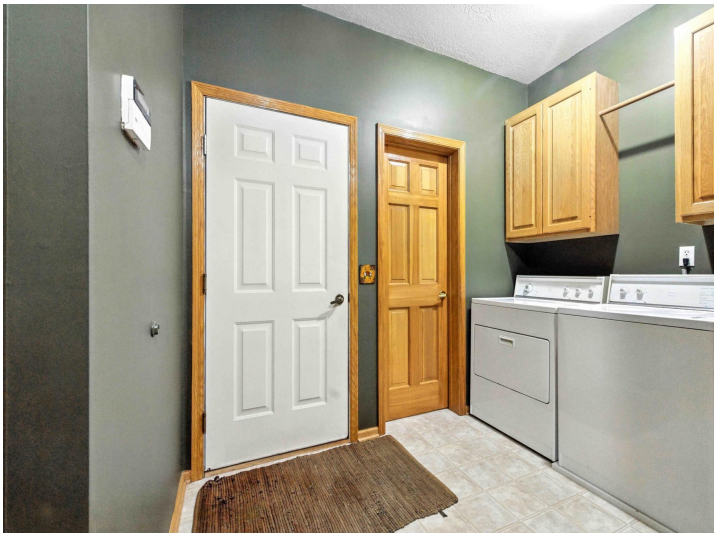
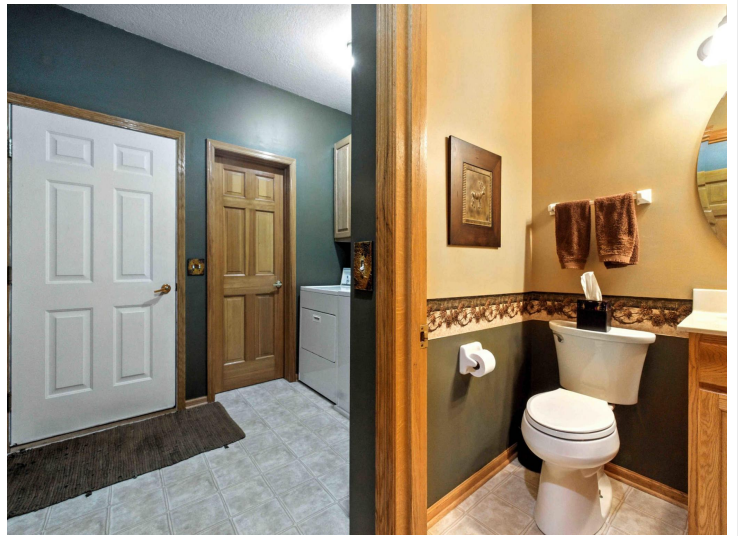
\$799,000
 MLS 6783147 Lake Home
 34221 Shore Drive
 Crosslake MN 56442



website: www.AffinityRealEstate.com | email: info@affinityrealestate.com | office: 218-237-3333 | fax: 218-237-3377

Affinity
REAL ESTATE INC

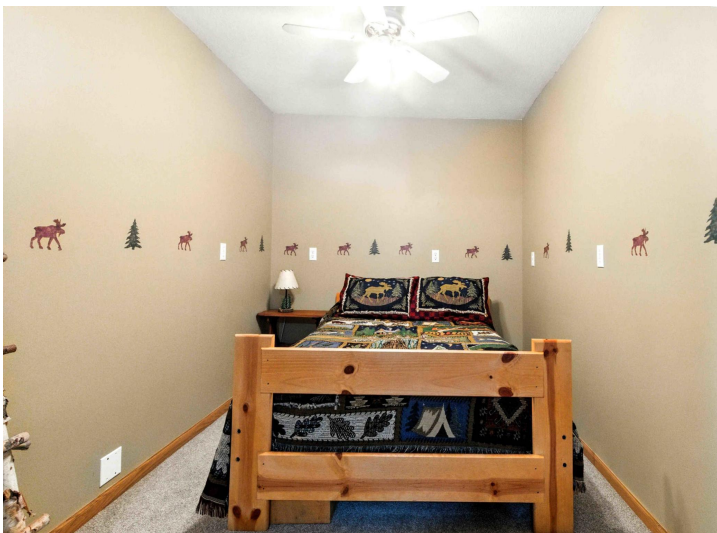
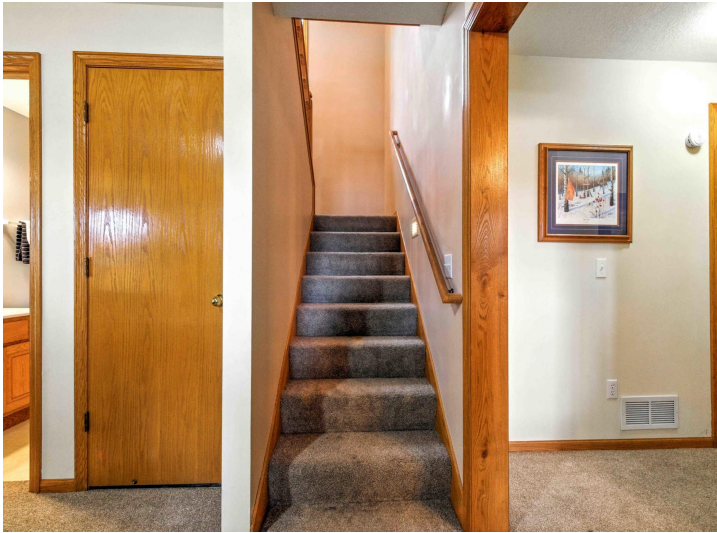
\$799,000
MLS 6783147 Lake Home
34221 Shore Drive
Crosslake MN 56442



website: www.AffinityRealEstate.com | email: info@affinityrealestate.com | office: 218-237-3333 | fax: 218-237-3377

Affinity
REAL ESTATE INC

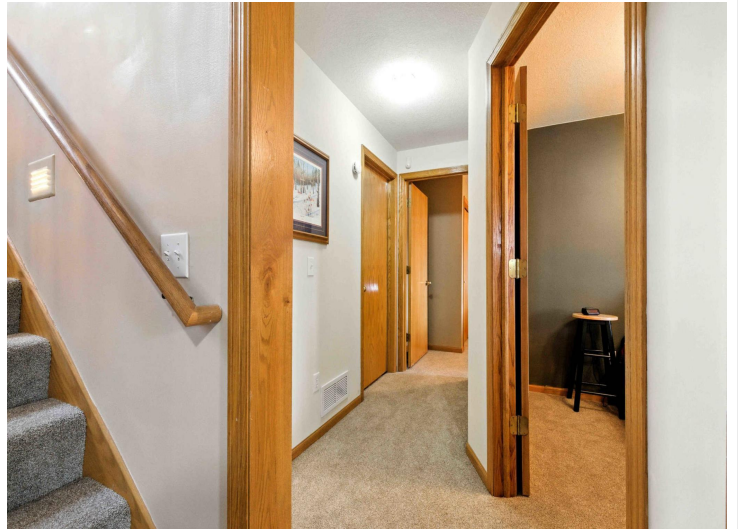
\$799,000
MLS 6783147 Lake Home
34221 Shore Drive
Crosslake MN 56442



website: www.AffinityRealEstate.com | email: info@affinityrealestate.com | office: 218-237-3333 | fax: 218-237-3377

Affinity
REAL ESTATE INC

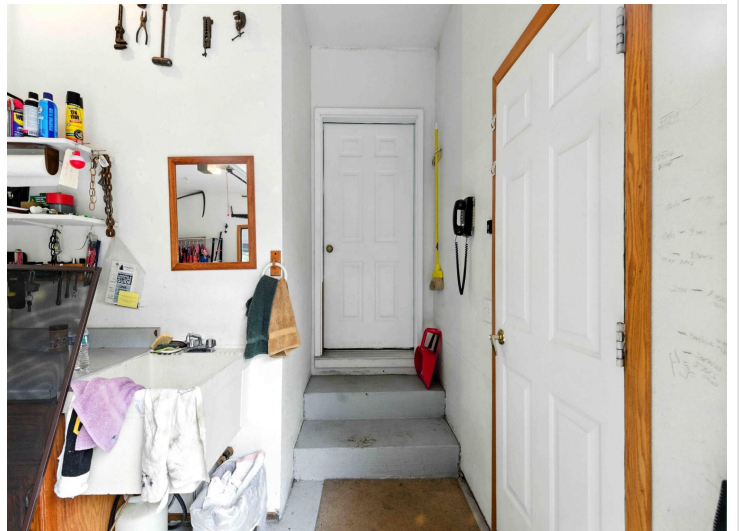
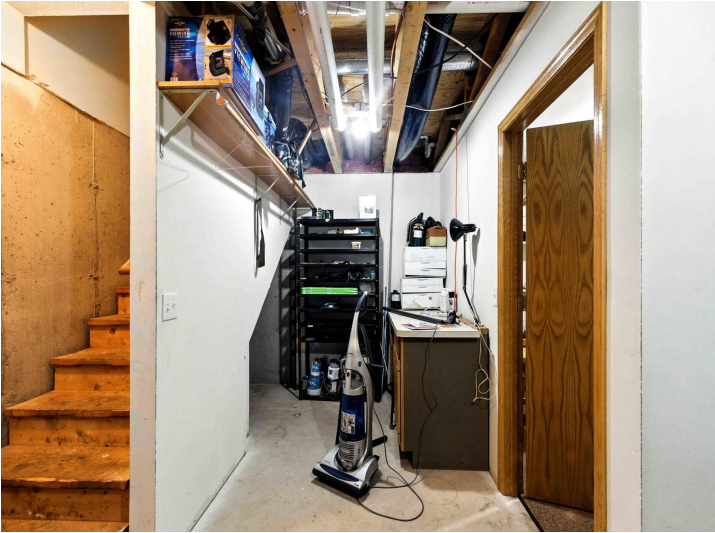
\$799,000
MLS 6783147 Lake Home
34221 Shore Drive
Crosslake MN 56442



website: www.AffinityRealEstate.com | email: info@affinityrealestate.com | office: 218-237-3333 | fax: 218-237-3377

Affinity
REAL ESTATE INC

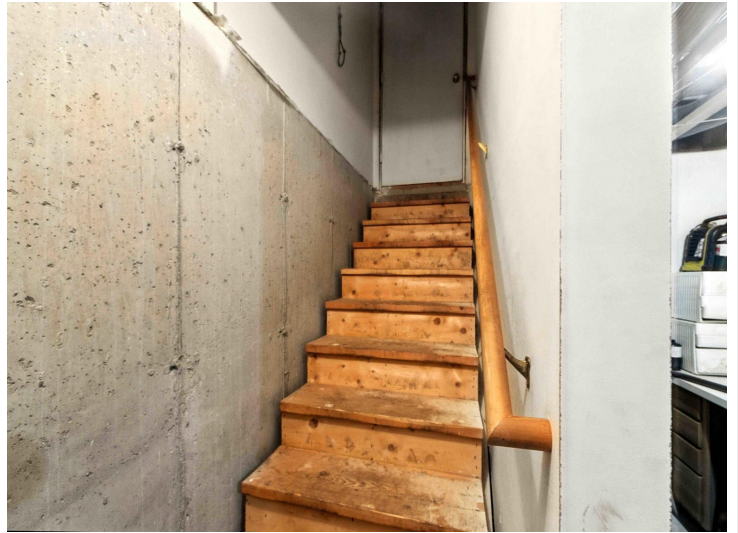
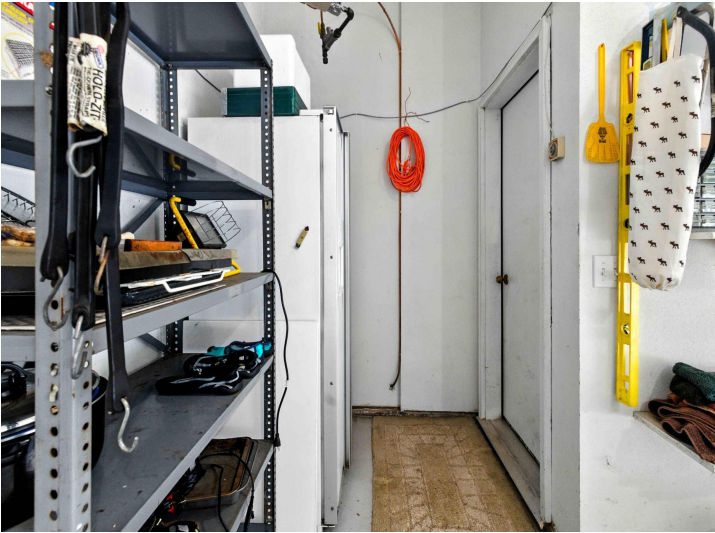
\$799,000
MLS 6783147 Lake Home
34221 Shore Drive
Crosslake MN 56442



website: www.AffinityRealEstate.com | email: info@affinityrealestate.com | office: 218-237-3333 | fax: 218-237-3377

Affinity
REAL ESTATE INC

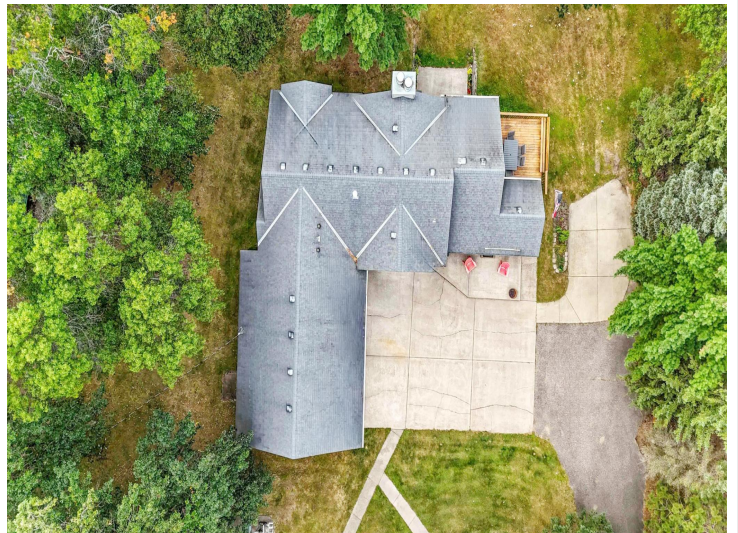
\$799,000
MLS 6783147 Lake Home
34221 Shore Drive
Crosslake MN 56442



website: www.AffinityRealEstate.com | email: info@affinityrealestate.com | office: 218-237-3333 | fax: 218-237-3377

Affinity
REAL ESTATE INC

\$799,000
MLS 6783147 Lake Home
34221 Shore Drive
Crosslake MN 56442



website: www.AffinityRealEstate.com | email: info@affinityrealestate.com | office: 218-237-3333 | fax: 218-237-3377

Affinity
REAL ESTATE INC

\$799,000
MLS 6783147 Lake Home
34221 Shore Drive
Crosslake MN 56442



website: www.AffinityRealEstate.com | email: info@affinityrealestate.com | office: 218-237-3333 | fax: 218-237-3377



\$799,000
 MLS 6783147 Lake Home
 34221 Shore Drive
 Crosslake MN 56442



website: www.AffinityRealEstate.com | email: info@affinityrealestate.com | office: 218-237-3333 | fax: 218-237-3377



\$799,000
 MLS 6783147 Lake Home
 34221 Shore Drive
 Crosslake MN 56442