



MLS 6783205 Land

\$99,995

1.53 Acres
Finished Lot(s)

14939 County 11
Park Rapids MN 56470

Status: Active

Description:

Welcome to Stony Lake Schoolhouse District 11. A rare and fun opportunity to own a piece of history! This beautiful schoolhouse may be the cornerstone of this offering but that isn't the end of the story. A perfect building site is cleared and ready for new construction. It would also be ideal as a recreational headquarters or perhaps a venue destination. Bring the RV and the toys as there are no restrictive covenants. Prime location off a blacktop road just south of the Dorset corner. New shingles in 2024, new exterior paint in 2025 and fiber optic internet to the property line. The schoolhouse features 1,024 square feet on the main level and showcases original features such as the hardwood flooring, trim, moldings, wainscoting, doors and more. Fun fact, the school operated from 1911-1953.

Additional Details:

Lot Acres	1.53
Lot Dimensions	300 x 222
School District	309
Taxes	\$363
Taxes with Assessments	\$584
Tax Year	2025

Additional Features:

Driving Directions:

From Park Rapids: Go East on Hwy 34 to a right on CR 11. Proceed to property on right. County 11 is the East boundary and 150th St. is the North boundary.



Listed By:
Affinity Real Estate Inc.

Affinity Real Estate Inc. participates in the Regional Multiple Listing Service of Minnesota, Inc Broker Reciprocity (sm) program, allowing us to display other broker's listings on our website. All properties are subject to prior sale, change or withdrawal.



Call Affinity Real Estate

218-237-3333

info@affinityrealestate.com



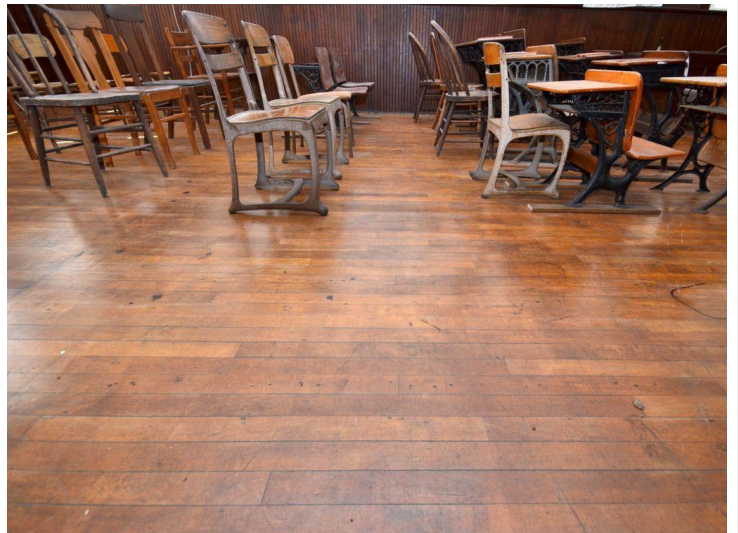
Affinity Real Estate - 600 Park Avenue South - Park Rapids MN 56470



website: www.AffinityRealEstate.com | email: info@affinityrealestate.com | office: 218-237-3333 | fax: 218-237-3377

Affinity
REAL ESTATE INC

\$99,995
MLS 6783205 Land
14939 County 11
Park Rapids MN 56470



website: www.AffinityRealEstate.com | email: info@affinityrealestate.com | office: 218-237-3333 | fax: 218-237-3377

Affinity
REAL ESTATE INC

\$99,995
MLS 6783205 Land
14939 County 11
Park Rapids MN 56470



website: www.AffinityRealEstate.com | email: info@affinityrealestate.com | office: 218-237-3333 | fax: 218-237-3377



\$99,995
MLS 6783205 Land
14939 County 11
Park Rapids MN 56470



website: www.AffinityRealEstate.com | email: info@affinityrealestate.com | office: 218-237-3333 | fax: 218-237-3377



\$99,995
MLS 6783205 Land
14939 County 11
Park Rapids MN 56470