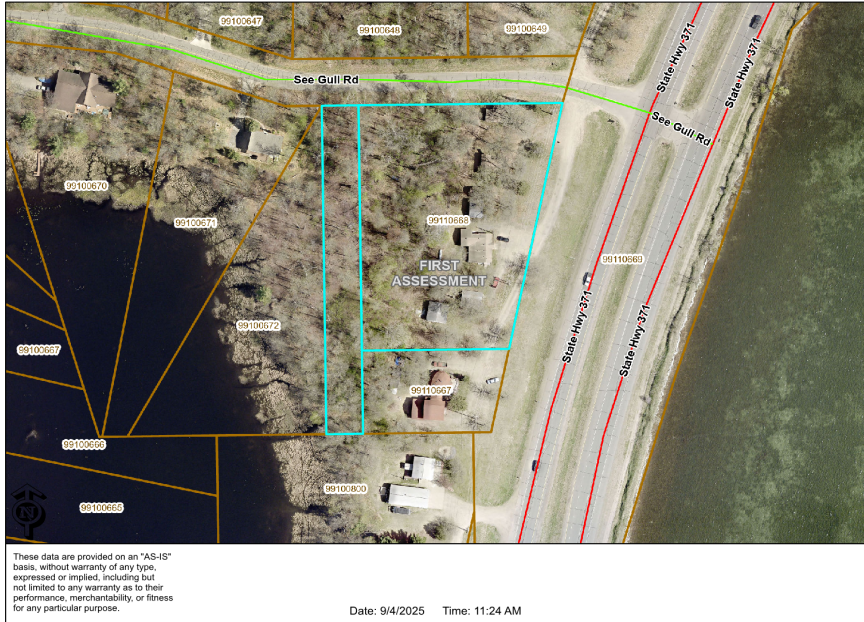




MLS 6783406 Lake Land

**\$599,900**



These data are provided on an "AS-IS" basis, without warranty of any type, expressed or implied, including but not limited to any warranty as to their performance, merchantability, or fitness for any particular purpose.

Date: 9/4/2025 Time: 11:24 AM

**Description:**

Commercial and residentially zoned 2.4 acre property. Property has great Highway 371 visibility with easy North and South Highway access. Association access to the Gull Lake chain with docking opportunity on Love Lake! Property is subdividable with multiple option for use! The High traffic counts make for a great business location and the convenient location is perfect for personal storage or Barn dominium!

**Additional Details:**

Lot Acres	2.43
Lot Dimensions	354x328x463x250
School District	181
Taxes	\$1,496
Taxes with Assessments	\$1,496
Tax Year	2024

**Additional Features:**

**Driving Directions:**

North of Brainerd/Baxter. Between Nisswa and Baxter on west side of highway across from North Long lake.



Listed By:  
RE/MAX Results - Nisswa

Affinity Real Estate Inc. participates in the Regional Multiple Listing Service of Minnesota, Inc Broker Reciprocity (sm) program, allowing us to display other broker's listings on our website. All properties are subject to prior sale, change or withdrawal.



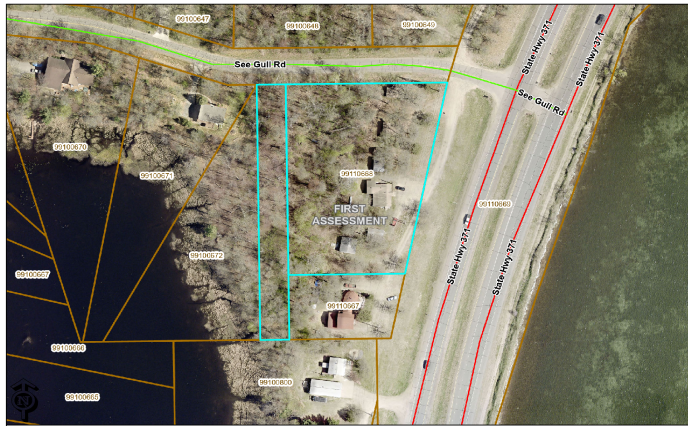
Call Affinity Real Estate

**218-237-3333**

[info@affinityrealestate.com](mailto:info@affinityrealestate.com)



Affinity Real Estate - 600 Park Avenue South - Park Rapids MN 56470



These data are provided on an "AS-IS" basis, without warranty of any type expressed or implied, including but not limited to any warranty as to their performance, merchantability, or fitness for any particular purpose.

Date: 9/4/2025 Time: 11:24 AM



website: [www.AffinityRealEstate.com](http://www.AffinityRealEstate.com) | email: [info@affinityrealestate.com](mailto:info@affinityrealestate.com) | office: 218-237-3333 | fax: 218-237-3377



**\$599,900**  
 MLS 6783406 Lake Land  
 19745 See Gull Road  
 Brainerd MN 56401



website: [www.AffinityRealEstate.com](http://www.AffinityRealEstate.com) | email: [info@affinityrealestate.com](mailto:info@affinityrealestate.com) | office: 218-237-3333 | fax:218-237-3377



**\$599,900**  
MLS 6783406 Lake Land  
19745 See Gull Road  
Brainerd MN 56401