



MLS 6783829 Land

**\$178,000**

10 Acres  
Raw Land

31455 Nagel Road  
Pequot Lakes MN 56472

Status: Pending

**Description:**

Located within a mile and a half of Pequot Lakes, this property is sure to be a very sought after 10 acres. (+/-) Features include slightly rolling land with great soil and has a variety of newly planted pines and other trees. The property not only has an abundance of wildlife, but there are also blackberries, raspberries and blueberries located throughout the property.

The Property Split is subject to approval by the City of Pequot Lakes and a Survey that is satisfactory to both the buyers and the sellers.

**Additional Details:**

Lot Acres	10
Lot Dimensions	450x700x636x1320
School District	186
Taxes	(unreported)
Taxes with Assessments	(unreported)
Tax Year	2025

**Additional Features:**

**Driving Directions:**

Directions: From State HWY 371 and Highway 11 in Pequot Lakes, go east approx. One-third mile and then north on Nagel Rd to property arrow and signs at the end of northbound Nagel Rd.



Listed By:  
RE/MAX Results - Nisswa

Affinity Real Estate Inc. participates in the Regional Multiple Listing Service of Minnesota, Inc Broker Reciprocity (sm) program, allowing us to display other broker's listings on our website. All properties are subject to prior sale, change or withdrawal.



**Call Affinity Real Estate**

**218-237-3333**

**info@affinityrealestate.com**



**Affinity Real Estate - 600 Park Avenue South - Park Rapids MN 56470**



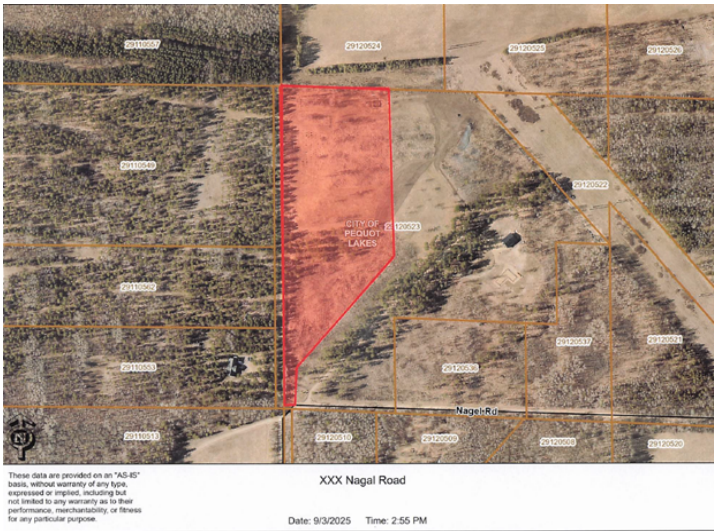


website: [www.AffinityRealEstate.com](http://www.AffinityRealEstate.com) | email: [info@affinityrealestate.com](mailto:info@affinityrealestate.com) | office: 218-237-3333 | fax: 218-237-3377



**\$178,000**  
MLS 6783829 Land  
31455 Nagel Road  
Pequot Lakes MN 56472





website: [www.AffinityRealEstate.com](http://www.AffinityRealEstate.com) | email: [info@affinityrealestate.com](mailto:info@affinityrealestate.com) | office: 218-237-3333 | fax: 218-237-3377



**\$178,000**  
 MLS 6783829 Land  
 31455 Nagel Road  
 Pequot Lakes MN 56472