



MLS 6784301 Residential

\$460,000

3,744 sq ft
4 bedrooms
3 baths

7778 County Road 1
Pine River MN 56474

Status: Active

Description:

Welcome to this charming 4-bedroom, 3-bath home nestled on 10 acres of peaceful, wooded land. A thoughtfully designed mother-in-law suite above the garage provides the perfect space for guests or extended family. With an expansive 6-stall garage, there's plenty of room for vehicles, storage, and projects. Sheds for animal shelter, and a heated pump house with well for easy watering. Plenty of room for cattle or horses to roam, plus an arena with original sand floor-ready to be refreshed for equestrian use. Surrounded by nature yet conveniently located, this property offers the perfect balance of comfort, space, and tranquility.

Additional Details:

Year Built	1979
Lot Acres	10
Lot Dimensions	778x560
Garage Stalls	6
School District	2174
Taxes	\$533
Taxes with Assessments	\$558
Tax Year	2025

Additional Features:

Basement: Egress Window(s), Finished, Full, Walkout **Fuel:** Propane, Wood **Garage:** 6 **Heat:** Baseboard, Boiler, Hot Water, Outdoor Furnace
Sewer: Private Sewer **Water:** Private **Air Conditioning:** Central Air, Window Unit(s)

Driving Directions:

Hwy 371 N to right on Cty Hwy 15 to right on Paul Bunyun Scenic Highway to home on the left.



Listed By:
Edina Realty, Inc.

Affinity Real Estate Inc. participates in the Regional Multiple Listing Service of Minnesota, Inc Broker Reciprocity (sm) program, allowing us to display other broker's listings on our website. All properties are subject to prior sale, change or withdrawal.



Call Affinity Real Estate

218-237-3333

info@affinityrealestate.com



Affinity Real Estate - 600 Park Avenue South - Park Rapids MN 56470



website: www.AffinityRealEstate.com | email: info@affinityrealestate.com | office: 218-237-3333 | fax:218-237-3377

Affinity
REAL ESTATE INC

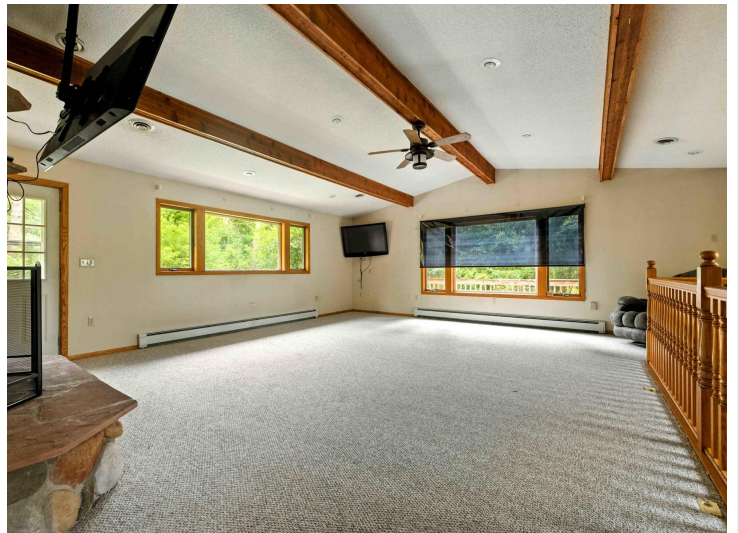
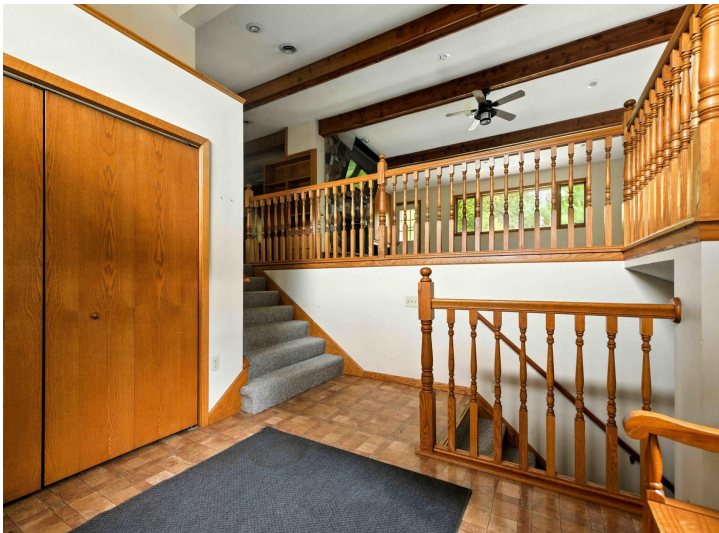
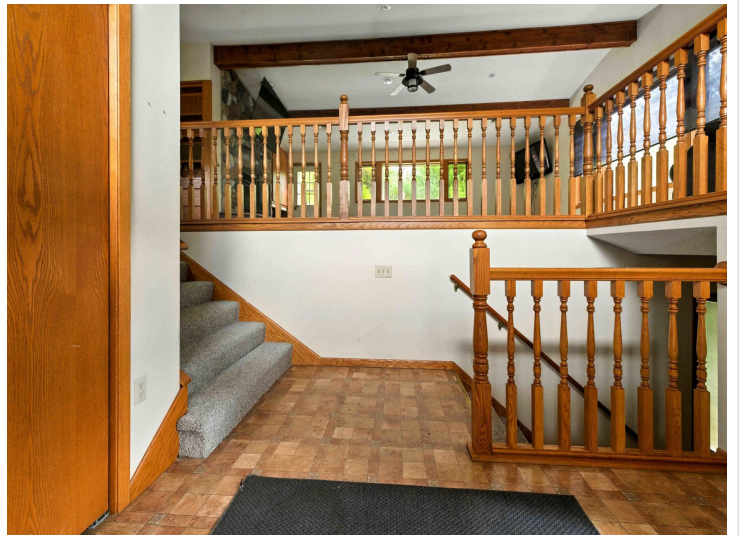
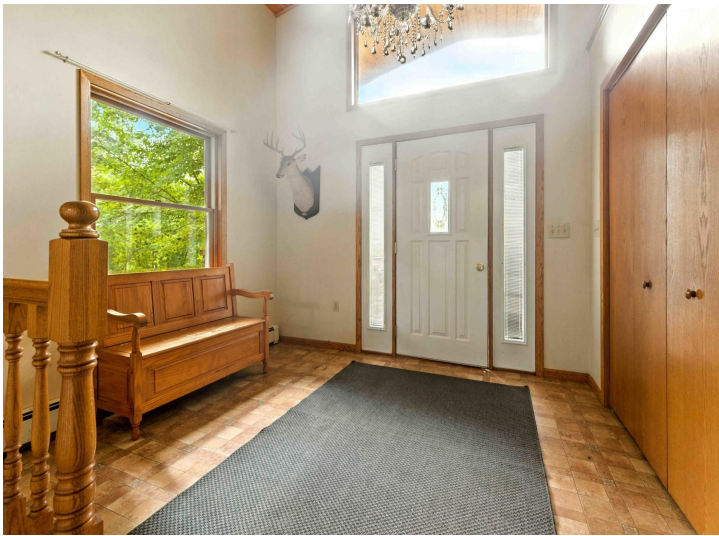
\$460,000
MLS 6784301 Residential
7778 County Road 1
Pine River MN 56474



website: www.AffinityRealEstate.com | email: info@affinityrealestate.com | office: 218-237-3333 | fax:218-237-3377



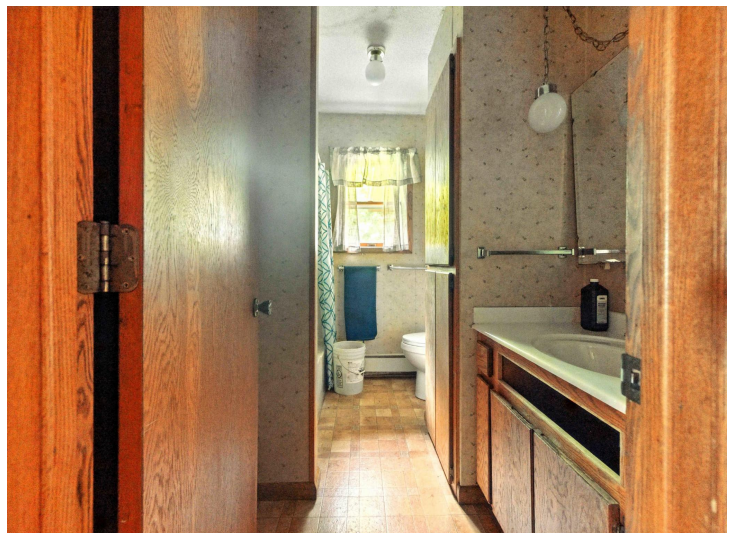
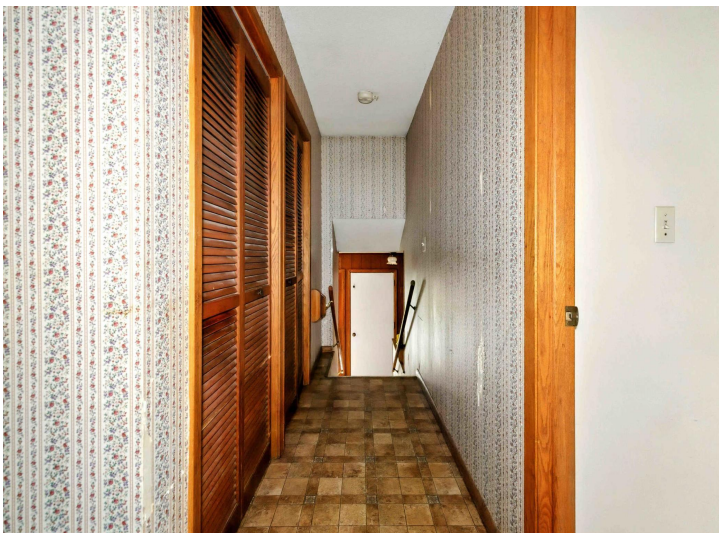
\$460,000
MLS 6784301 Residential
7778 County Road 1
Pine River MN 56474



website: www.AffinityRealEstate.com | email: info@affinityrealestate.com | office: 218-237-3333 | fax:218-237-3377



\$460,000
MLS 6784301 Residential
7778 County Road 1
Pine River MN 56474



website: www.AffinityRealEstate.com | email: info@affinityrealestate.com | office: 218-237-3333 | fax:218-237-3377



\$460,000
MLS 6784301 Residential
7778 County Road 1
Pine River MN 56474



website: www.AffinityRealEstate.com | email: info@affinityrealestate.com | office: 218-237-3333 | fax:218-237-3377



\$460,000
MLS 6784301 Residential
7778 County Road 1
Pine River MN 56474



website: www.AffinityRealEstate.com | email: info@affinityrealestate.com | office: 218-237-3333 | fax:218-237-3377

Affinity
REAL ESTATE INC

\$460,000
MLS 6784301 Residential
7778 County Road 1
Pine River MN 56474



website: www.AffinityRealEstate.com | email: info@affinityrealestate.com | office: 218-237-3333 | fax:218-237-3377



\$460,000
MLS 6784301 Residential
7778 County Road 1
Pine River MN 56474