



MLS 6784577 Residential

\$592,050

1,738 sq ft
3 bedrooms
2 baths

5390 Pine Haven Place
Nisswa MN 56468

Status: Active

Description:

NISSWA CROSSINGS Discover main level living & no maintenance! This model listed is the "Executive". Choose from 22 home sites near downtown Nisswa, offering 2, 3, or 4 bedrooms, all designed to ensure maintenance is a thing of the past. Say goodbye to lawn upkeep and snow shoveling thanks to a maintenance-free living community. Embrace the proximity to Paul Bunyan Trail System, Nisswa City Park, Gull Chain Landing and downtown Nisswa with its array of shops & dining experiences. At Thomas Allen Homes, we allow you to select your finishes, colors, and options to create a home that matches your style. From flooring to fixtures, make this your home. We take pride in ensuring your journey into a new one home is exciting and stress-free. Stop by to secure your spot in this unique community in the Brainerd Lakes Area.

Additional Details:

Year Built	2025
Lot Acres	0.41
Lot Dimensions	120x207x216x52
Garage Stalls	3
School District	896
Taxes	\$50
Taxes with Assessments	\$50
Tax Year	2025

Additional Features:

Basement: None **Fuel:** Array **Garage:** 3 **Heat:** Forced Air **Sewer:** City Sewer/Connected **Water:** Private **Air Conditioning:** Central Air

Driving Directions:

FROM Brainerd, North on 371 to Cty Rd 18 (lights south end of Downtown), turn right, straight through round-about 2 blocks to Community on left.



Listed By:
Edina Realty, Inc.

Affinity Real Estate Inc. participates in the Regional Multiple Listing Service of Minnesota, Inc Broker Reciprocity (sm) program, allowing us to display other broker's listings on our website. All properties are subject to prior sale, change or withdrawal.



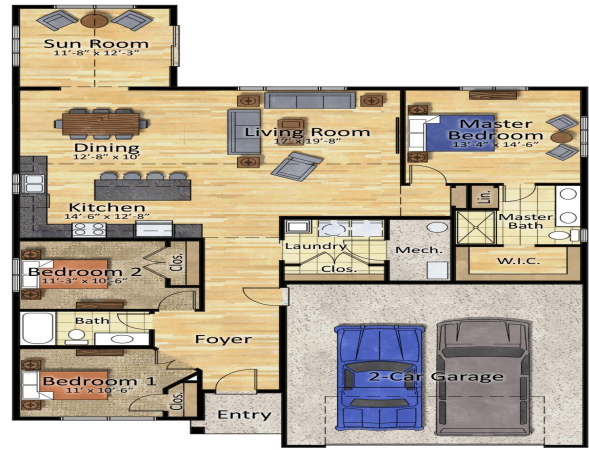
Call Affinity Real Estate

218-237-3333

info@affinityrealestate.com



Affinity Real Estate - 600 Park Avenue South - Park Rapids MN 56470



Floor Plan

ResidentialRendering.com



website: www.AffinityRealEstate.com | email: info@affinityrealestate.com | office: 218-237-3333 | fax:218-237-3377



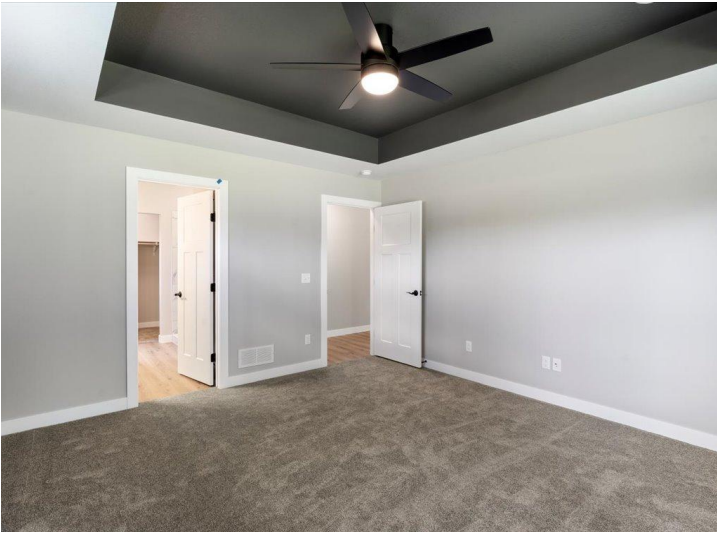
\$592,050
 MLS 6784577 Residential
 5390 Pine Haven Place
 Nisswa MN 56468



website: www.AffinityRealEstate.com | email: info@affinityrealestate.com | office: 218-237-3333 | fax:218-237-3377

Affinity
REAL ESTATE INC

\$592,050
MLS 6784577 Residential
5390 Pine Haven Place
Nisswa MN 56468



website: www.AffinityRealEstate.com | email: info@affinityrealestate.com | office: 218-237-3333 | fax: 218-237-3377



\$592,050
MLS 6784577 Residential
5390 Pine Haven Place
Nisswa MN 56468



website: www.AffinityRealEstate.com | email: info@affinityrealestate.com | office: 218-237-3333 | fax:218-237-3377

Affinity
REAL ESTATE INC

\$592,050
MLS 6784577 Residential
5390 Pine Haven Place
Nisswa MN 56468



website: www.AffinityRealEstate.com | email: info@affinityrealestate.com | office: 218-237-3333 | fax:218-237-3377



\$592,050
MLS 6784577 Residential
5390 Pine Haven Place
Nisswa MN 56468