



MLS 6785469 Residential

\$199,800

960 sq ft
3 bedrooms
1 baths

1510 Grotte Avenue
Bemidji MN 56601

Status: Active

Description:

Bordering Bemidji city limits, this property delivers a country feel with close convenience minutes to amenities. The 3BR/1BA, 960-sq-ft home sits on a level 2.5-acre parcel on the east side of town. Durable steel siding and natural-gas service (added 2024) pair with a newer furnace for year-round efficiency. Interior updates include: kitchen refresh with newer cabinetry, countertops, sink/faucet, and refrigerator; bathroom with new sink/faucet; also newer water heater and pressure tank. Each bedroom has a new egress window. Outside, enjoy a large concrete patio with a fire ring. The fully sheeted, insulated, double-stall detached pole building features a concrete floor and power with newer electrical—great for vehicles, shop, or gear. Private well and compliant septic in place. Property holds a Short-Term Rental license with Bemidji Township; buyer to verify requirements and transferability with Bemidji Township. Solid, straightforward, and ready for its next chapter—full-time living or an easy base close to town.

Additional Details:

Year Built	1996
Lot Acres	2.5
Lot Dimensions	360x300
Garage Stalls	2
School District	1386
Taxes	\$1,934
Taxes with Assessments	\$1,934
Tax Year	2025

Additional Features:

Basement: None **Fuel:** Array **Garage:** 2 **Heat:** Fireplace(s) **Sewer:** Private Sewer, Septic System Compliant - Yes **Water:** 4-Inch Submersible, Drilled, Private, Well **Air Conditioning:** Window Unit(s)

Driving Directions:

Lake ave to Saint Onge DR NE Right onto Grotte home is on Left



Listed By:
218 Real Estate

Affinity Real Estate Inc. participates in the Regional Multiple Listing Service of Minnesota, Inc Broker Reciprocity (sm) program, allowing us to display other broker's listings on our website. All properties are subject to prior sale, change or withdrawal.



Call Affinity Real Estate

218-237-3333

info@affinityrealestate.com



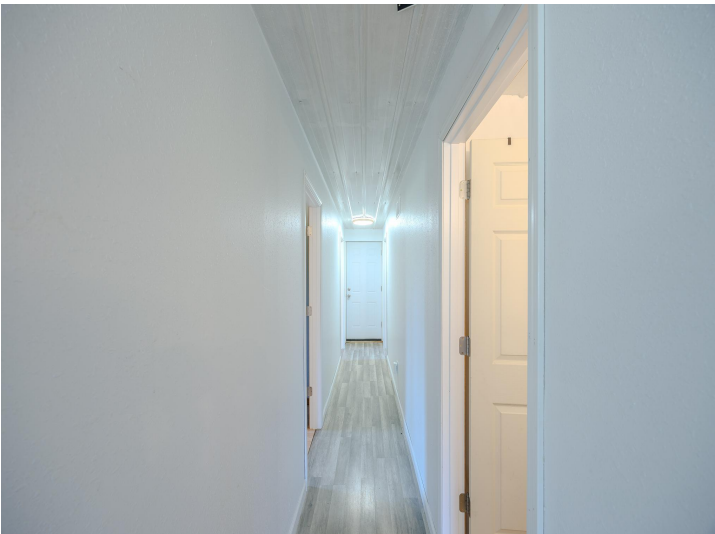
Affinity Real Estate - 600 Park Avenue South - Park Rapids MN 56470



website: www.AffinityRealEstate.com | email: info@affinityrealestate.com | office: 218-237-3333 | fax: 218-237-3377



\$199,800
 MLS 6785469 Residential
 1510 Grotte Avenue
 Bemidji MN 56601



website: www.AffinityRealEstate.com | email: info@affinityrealestate.com | office: 218-237-3333 | fax: 218-237-3377



\$199,800
 MLS 6785469 Residential
 1510 Grotte Avenue
 Bemidji MN 56601



website: www.AffinityRealEstate.com | email: info@affinityrealestate.com | office: 218-237-3333 | fax: 218-237-3377



\$199,800
MLS 6785469 Residential
1510 Grotte Avenue
Bemidji MN 56601



website: www.AffinityRealEstate.com | email: info@affinityrealestate.com | office: 218-237-3333 | fax: 218-237-3377



\$199,800
 MLS 6785469 Residential
 1510 Grotte Avenue
 Bemidji MN 56601



website: www.AffinityRealEstate.com | email: info@affinityrealestate.com | office: 218-237-3333 | fax: 218-237-3377

Affinity
REAL ESTATE INC

\$199,800
MLS 6785469 Residential
1510 Grotte Avenue
Bemidji MN 56601



website: www.AffinityRealEstate.com | email: info@affinityrealestate.com | office: 218-237-3333 | fax: 218-237-3377



\$199,800
MLS 6785469 Residential
1510 Grotte Avenue
Bemidji MN 56601