



MLS 6785667 Residential

**\$345,875**

1,023 sq ft  
2 bedrooms  
1 baths

Lot 2 Block 2 Cedar Scenic Court  
Brainerd MN 56401

Status: Active

#### Description:

\*\*\*Ready to Start\*\*\* Time to make your selections. This "Meadows" plan can be completed with 2-4 bedrooms, 1-2 baths, 2 or 3 stall garage with a lower level finished or left unfinished. There are multiple other homes at various phases of construction to tour. The MEADOWS plan boasts vaults, open space, walk in closets, custom cabinets, stainless appliances, XL family room and more. This home is priced with an unfinished lower-level. All photos used are from other "Meadow" plans built by "Thomas Allen Homes". At Thomas Allen Homes, we believe that crafting your dream home should be a thrilling and seamless experience. Our commitment is to ensure your journey is not just stress-free but exciting. With a range of choice lots in prime locations, the perfect setting for your new home awaits. There's no need to wait for the right season—secure your spot now and embark on this incredible journey toward owning your dream home.

#### Additional Details:

Year Built	2025
Lot Acres	0.46
Lot Dimensions	16x125
Garage Stalls	2
School District	181
Taxes	\$230
Taxes with Assessments	\$230
Tax Year	2025

#### Additional Features:

**Basement:** Block, Daylight/Lookout Windows, Egress Window(s), Full, Walkout **Fuel:** Natural Gas **Garage:** 2 **Heat:** Forced Air **Sewer:** City Sewer/Connected **Water:** City Water/Connected **Air Conditioning:** Central Air

#### Driving Directions:

210 in Baxter north on Memorywood to west on Cedar Scenic to property on right.



Listed By:  
Edina Realty, Inc.

Affinity Real Estate Inc. participates in the Regional Multiple Listing Service of Minnesota, Inc Broker Reciprocity (sm) program, allowing us to display other broker's listings on our website. All properties are subject to prior sale, change or withdrawal.



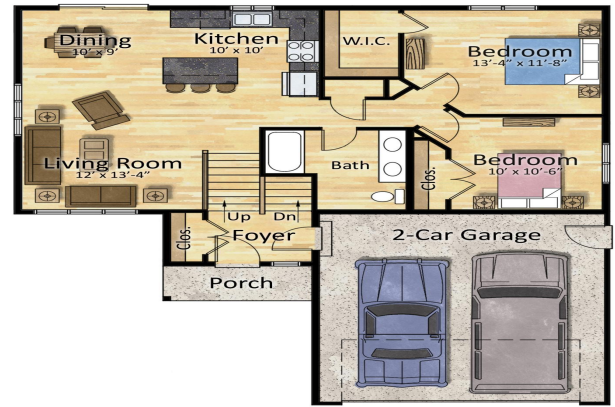
Call Affinity Real Estate

**218-237-3333**

[info@affinityrealestate.com](mailto:info@affinityrealestate.com)



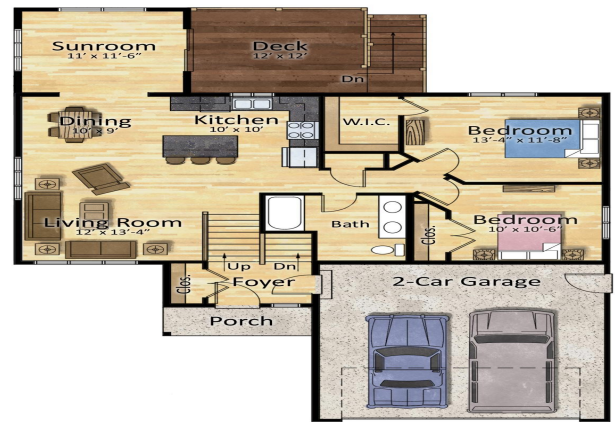
Affinity Real Estate - 600 Park Avenue South - Park Rapids MN 56470



First Floor Plan



Lower Floor Plan



First Floor Plan



First Floor Plan

website: [www.AffinityRealEstate.com](http://www.AffinityRealEstate.com) | email: [info@affinityrealestate.com](mailto:info@affinityrealestate.com) | office: 218-237-3333 | fax: 218-237-3377



**\$345,875**

MLS 6785667 Residential  
Lot 2 Block 2 Cedar Scenic  
Court  
Brainerd MN 56401