



MLS 6785811 Land

**\$89,900**

1.2 Acres  
Subdivided

42522 Long Lake Road  
Ottertail MN 56571

Status: Active

**Description:**

Escape to 1.2 acres of serene woods nestled on a peaceful hillside for an ideal retreat or the perfect canvas to build your dream home. This property offers a rustic getaway with an older garage, two storage containers, and a 5th wheel included, giving you space and flexibility from day one. Conveniently located on a tar road and close to both Otter Tail Lake and Long Lake, you'll have quick access to some of the area's best recreation while still enjoying the privacy of your own wooded sanctuary. With power and a well already in place, the groundwork is set for your vision. Perfect as a getaway, a basecamp, or the site of your future build, this property offers endless possibilities.

**Additional Details:**

Lot Acres	1.2
Lot Dimensions	Irregular
School District	549
Taxes	\$380
Taxes with Assessments	\$380
Tax Year	2025

**Additional Features:**

**Driving Directions:**

From Ottertail, head N on MN-108 W and then W onto Co Hwy 1. Turn N onto Long Lake Rd and head NW into the property.



Listed By:  
Keller Williams Realty Professionals

Affinity Real Estate Inc. participates in the Regional Multiple Listing Service of Minnesota, Inc Broker Reciprocity (sm) program, allowing us to display other broker's listings on our website. All properties are subject to prior sale, change or withdrawal.



**Call Affinity Real Estate**

**218-237-3333**

**info@affinityrealestate.com**



**Affinity Real Estate - 600 Park Avenue South - Park Rapids MN 56470**





website: [www.AffinityRealEstate.com](http://www.AffinityRealEstate.com) | email: [info@affinityrealestate.com](mailto:info@affinityrealestate.com) | office: 218-237-3333 | fax: 218-237-3377

**Affinity**  
REAL ESTATE INC

**\$89,900**  
MLS 6785811 Land  
42522 Long Lake Road  
Ottertail MN 56571



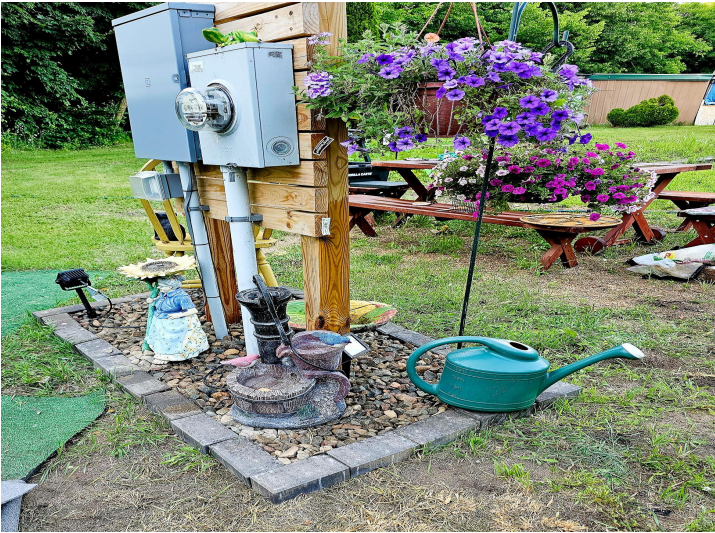


website: [www.AffinityRealEstate.com](http://www.AffinityRealEstate.com) | email: [info@affinityrealestate.com](mailto:info@affinityrealestate.com) | office: 218-237-3333 | fax: 218-237-3377



**\$89,900**  
 MLS 6785811 Land  
 42522 Long Lake Road  
 Ottertail MN 56571



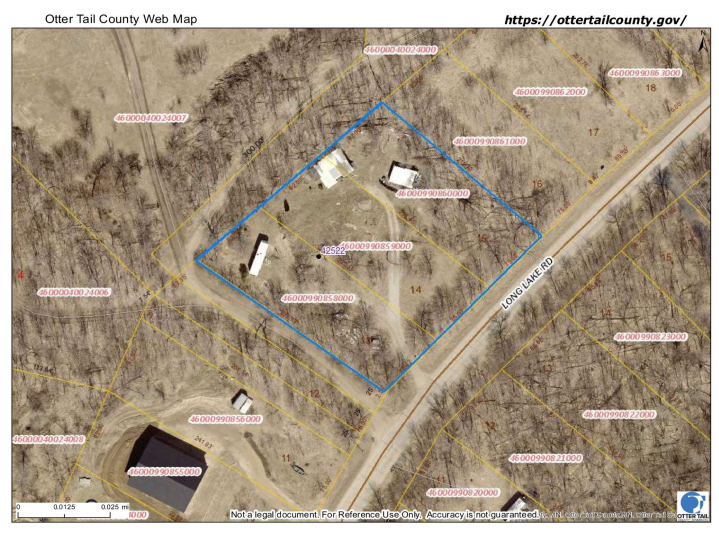


website: [www.AffinityRealEstate.com](http://www.AffinityRealEstate.com) | email: [info@affinityrealestate.com](mailto:info@affinityrealestate.com) | office: 218-237-3333 | fax: 218-237-3377



**\$89,900**  
 MLS 6785811 Land  
 42522 Long Lake Road  
 Ottertail MN 56571





website: [www.AffinityRealEstate.com](http://www.AffinityRealEstate.com) | email: [info@affinityrealestate.com](mailto:info@affinityrealestate.com) | office: 218-237-3333 | fax: 218-237-3377



**\$89,900**  
 MLS 6785811 Land  
 42522 Long Lake Road  
 Ottertail MN 56571



website: [www.AffinityRealEstate.com](http://www.AffinityRealEstate.com) | email: [info@affinityrealestate.com](mailto:info@affinityrealestate.com) | office: 218-237-3333 | fax:218-237-3377



**\$89,900**

MLS 6785811 Land  
42522 Long Lake Road  
Ottertail MN 56571



website: [www.AffinityRealEstate.com](http://www.AffinityRealEstate.com) | email: [info@affinityrealestate.com](mailto:info@affinityrealestate.com) | office: 218-237-3333 | fax:218-237-3377



**\$89,900**

MLS 6785811 Land  
42522 Long Lake Road  
Ottertail MN 56571



website: [www.AffinityRealEstate.com](http://www.AffinityRealEstate.com) | email: [info@affinityrealestate.com](mailto:info@affinityrealestate.com) | office: 218-237-3333 | fax:218-237-3377



**\$89,900**

MLS 6785811 Land  
42522 Long Lake Road  
Ottertail MN 56571