



MLS 6786408 Commercial

\$789,000

101 West Main St
Perham MN 56573

Status: Active

Description:

THE BACK PORCH – HISTORIC BUILDING & PROFITABLE BUSINESS IN DOWNTOWN PERHAM! A Rare Opportunity to own one of Perham's most Recognized & Beloved Businesses — The Back Porch, a Long-Standing Local Favorite located in the Heart of Downtown Perham.

Positioned on a Prime Corner Double Lot on Main Street, just steps from Turtle Race Park, this property enjoys Exceptional Visibility & Consistent Foot Traffic — the same qualities that make Downtown Perham such a Vibrant Place to Do Business.

Built with Craftsmanship that has stood the test of time, this Historic Property blends Character & Opportunity in a way that's increasingly rare. The Expansive Building offers over 11,000 SqFt of Space, with approximately 5,750 SqFt of Finished Retail, plus Generous Storage, Work Areas, and a Full Second Story with potential for Loft Apartments or Future Expansion.

The Back Porch has been part of Perham's Story for Decades — a true Cornerstone of the Community. Now, it's ready for its Next Chapter. With its Prime Location, Turnkey Operation, and Enduring Reputation, this property represents a unique chance to step into a Profitable Business & Iconic Building in the Heart of Perham.

Additional Details:

Year Built	1894
Lot Acres	0.09
Lot Dimensions	50 x 80
School District	549
Taxes	\$5,546
Taxes with Assessments	\$6,850
Tax Year	2025

Additional Features:

Basement: Full, Partially Finished, Storage Space **Fuel:** Electric, Natural Gas **Heat:** Forced Air **Sewer:** City Sewer/Connected **Water:** City Water/Connected **Air Conditioning:** Central Air



Listed By:
Jack Chivers Realty

Street & 1st Ave. Inc. participates in the Regional Multiple Listing Service of Minnesota, Inc Broker Reciprocity (sm) program, allowing us to display other broker's listings on our website. All properties are subject to prior sale, change or withdrawal.



Call Affinity Real Estate

218-237-3333

info@affinityrealestate.com



Affinity Real Estate - 600 Park Avenue South - Park Rapids MN 56470



website: www.AffinityRealEstate.com | email: info@affinityrealestate.com | office: 218-237-3333 | fax: 218-237-3377



\$789,000
 MLS 6786408 Commercial
 101 West Main St
 Perham MN 56573



website: www.AffinityRealEstate.com | email: info@affinityrealestate.com | office: 218-237-3333 | fax: 218-237-3377

Affinity
REAL ESTATE INC

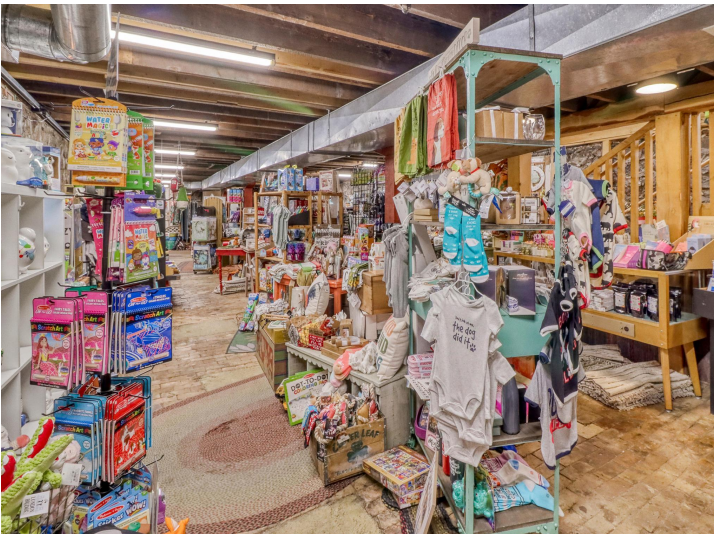
\$789,000
MLS 6786408 Commercial
101 West Main St
Perham MN 56573



website: www.AffinityRealEstate.com | email: info@affinityrealestate.com | office: 218-237-3333 | fax: 218-237-3377

Affinity
REAL ESTATE INC

\$789,000
MLS 6786408 Commercial
101 West Main St
Perham MN 56573



website: www.AffinityRealEstate.com | email: info@affinityrealestate.com | office: 218-237-3333 | fax: 218-237-3377

Affinity
REAL ESTATE INC

\$789,000
MLS 6786408 Commercial
101 West Main St
Perham MN 56573



website: www.AffinityRealEstate.com | email: info@affinityrealestate.com | office: 218-237-3333 | fax: 218-237-3377



\$789,000
 MLS 6786408 Commercial
 101 West Main St
 Perham MN 56573



website: www.AffinityRealEstate.com | email: info@affinityrealestate.com | office: 218-237-3333 | fax: 218-237-3377



\$789,000
MLS 6786408 Commercial
101 West Main St
Perham MN 56573