



MLS 6786483 Land

\$100,000

12.22 Acres
Plat Designed

(Lot 10) TBD Rock Lake Road
Rochert MN 56578

Status: Active

Description:

I'd like to welcome you to explore Lot 10 at Rock Lake. At 12.22 surveyed acres, this property stands out as the largest of all the Rock Lake lots. It is fully wooded with a cleared building site already in place—ready for your dream home or cabin.

Although Lot 10 does not have direct lake frontage, it serves as an excellent back-lot opportunity for one of the nearby lakefront lots (Lots 1–5 or 7–9) or could be purchased alongside a lake lot for private water access. Beyond its building potential, Lot 10 offers tremendous hunting opportunities with excellent deer and turkey habitat, making it a versatile property for both recreation and residence.

About Rock Lake:

Rock Lake is a 1,048-acre lake located about eight miles northeast of Detroit Lakes in central Becker County. It is locally noted for solid panfish angling, along with fair walleye, largemouth bass, and northern pike fishing. The lake is also well known for excellent late-season waterfowl hunting.

The surrounding woods are filled with deer trails worn down to bare dirt, and the area is known for whitetail, turkey, and even bear. The location also places you close to Tamarac Wildlife Refuge, offering even more outdoor opportunities.

Highlights of this Lot:

- *Size: 12.22 surveyed acres
- *Fully wooded with a cleared building site
- *Perfect as a back lot for Lots 1–5 or 7–9
- *Option to pair with a lake lot for water access
- *Tremendous deer and turkey hunting

- *Buildable with no covenants or restrictions



Listed By:
Whitetail Properties Real Estate

Affinity Real Estate Inc. participates in the Regional Multiple Listing Service of Minnesota, Inc. Broker Reciprocity (rm) program, allowing us to display other broker's listings on our website. All properties are subject to prior sale, change or withdrawal.

Overall Rock Lake Offering:

With ten lots available—ranging from just over 2.5 acres to just over 12 acres, and with shoreline stretching anywhere from 207 to 1,700+ feet—there is truly something for every goal and budget. Whether you're looking for a lakeside retreat or a larger back lot with hunting potential, Rock Lake has the perfect fit.



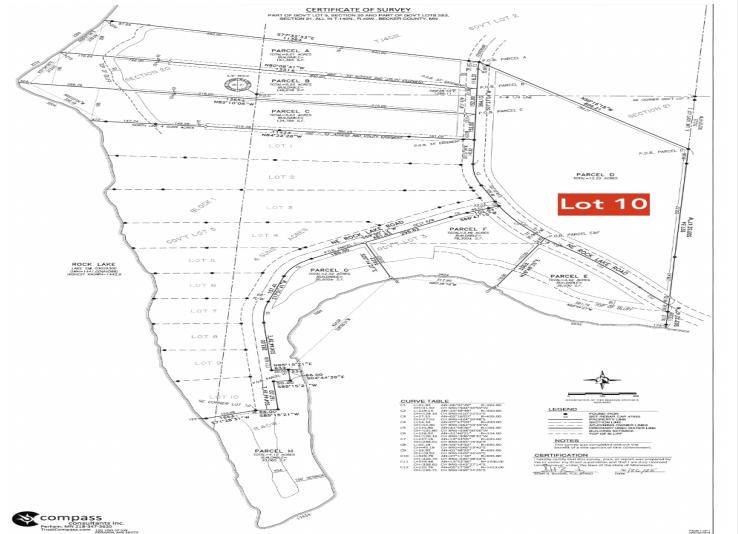
Call Affinity Real Estate

218-237-3333

info@affinityrealestate.com



Affinity Real Estate - 600 Park Avenue South - Park Rapids MN 56470



website: www.AffinityRealEstate.com | email: info@affinityrealestate.com | office: 218-237-3333 | fax: 218-237-3377



\$100,000
 MLS 6786483 Land
 (Lot 10) TBD Rock Lake
 Road
 Rochert MN 56578



website: www.AffinityRealEstate.com | email: info@affinityrealestate.com | office: 218-237-3333 | fax:218-237-3377



\$100,000
MLS 6786483 Land
(Lot 10) TBD Rock Lake
Road
Rochert MN 56578