



MLS 6786937 Land

\$29,900

4.5 Acres
Raw Land

TBD County Highway 39
Ponsford MN 56575

Status: Active

Description:

This enchanting wooded lot is the perfect spot for your camper or future dream home. Just minutes from the picturesque Shell Lake and surrounded by pristine lakes and lush forests, this property offers a serene escape into nature. Scenic trails wind through the land, and a well-placed deer stand adds a touch of adventure to this tranquil haven. Embrace the beauty and serenity that this unique property has to offer!

Additional Details:

Lot Acres	4.5
Lot Dimensions	Irregular
School District	309
Taxes	(unreported)
Taxes with Assessments	(unreported)
Tax Year	2025

Additional Features:

Driving Directions:

From Park Rapids highway 71/34 head West on highway 34 to County Road 39. North on 39 approximately 5 miles to property on Right.



Listed By:
Wolff & Simon Real Estate

Affinity Real Estate Inc. participates in the Regional Multiple Listing Service of Minnesota, Inc Broker Reciprocity (sm) program, allowing us to display other broker's listings on our website. All properties are subject to prior sale, change or withdrawal.



Call Affinity Real Estate

218-237-3333

info@affinityrealestate.com



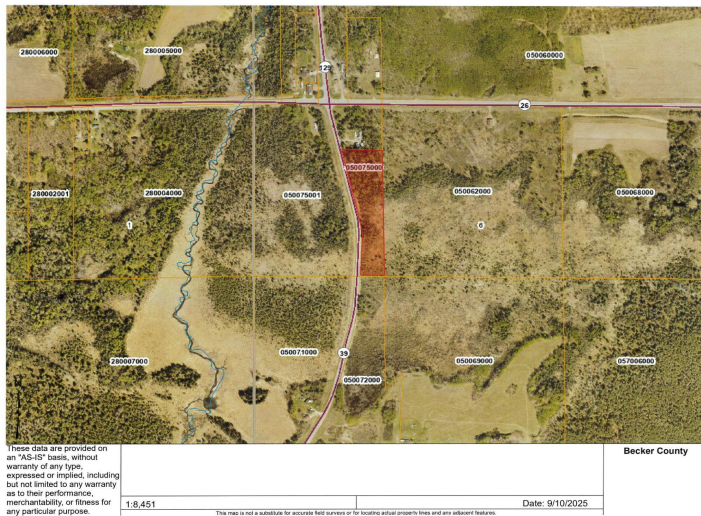
Affinity Real Estate - 600 Park Avenue South - Park Rapids MN 56470



website: www.AffinityRealEstate.com | email: info@affinityrealestate.com | office: 218-237-3333 | fax: 218-237-3377



\$29,900
 MLS 6786937 Land
 TBD County Highway 39
 Ponsford MN 56575



website: www.AffinityRealEstate.com | email: info@affinityrealestate.com | office: 218-237-3333 | fax: 218-237-3377



\$29,900
 MLS 6786937 Land
 TBD County Highway 39
 Ponsford MN 56575