



MLS 6787184 Land

\$75,000

10 Acres
Raw Land

Track C Hwy 87
Backus MN 56435

Status: Active

Description:

This 10-acre wooded property south of Backus features mature pines and hardwoods in a quiet Northwoods setting. The forested terrain provides excellent wildlife habitat, making it ideal for hunting, camping, or creating a private retreat. With direct access to the Paul Bunyan State Trail, you can step out to enjoy paved biking, walking, or snowmobiling right from your property. Year-round access makes this a convenient spot for a cabin or future home tucked in the trees. Close to area lakes, public land, and trails, it's a great base for enjoying all the outdoor recreation the region has to offer.

Additional Details:

| | |
|------------------------|--------------|
| Lot Acres | 10 |
| Lot Dimensions | 891x561x738x |
| School District | 2174 |
| Taxes | \$18 |
| Taxes with Assessments | \$18 |
| Tax Year | 2025 |

Additional Features:

Driving Directions:

1.3 miles south of downtown Backus on Hwy 87, right at 90 degree curve to West on left side.



Listed By:
Gallery of Homes

Affinity Real Estate Inc. participates in the Regional Multiple Listing Service of Minnesota, Inc Broker Reciprocity (sm) program, allowing us to display other broker's listings on our website. All properties are subject to prior sale, change or withdrawal.



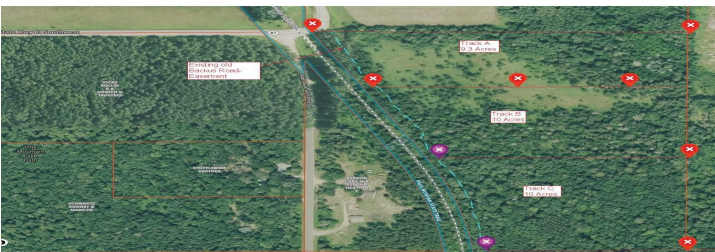
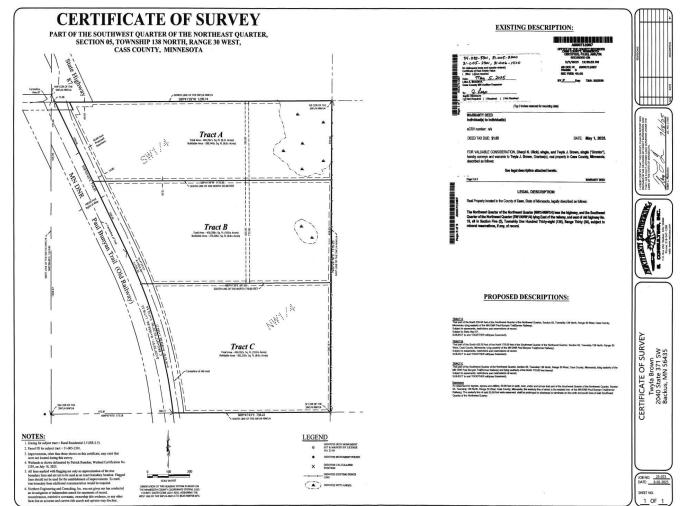
Call Affinity Real Estate

218-237-3333

info@affinityrealestate.com



Affinity Real Estate - 600 Park Avenue South - Park Rapids MN 56470



website: www.AffinityRealEstate.com | email: info@affinityrealestate.com | office: 218-237-3333 | fax: 218-237-3377



\$75,000
MLS 6787184 Land
Track C Hwy 87
Backus MN 56435