



MLS 6787791 Land

**\$100,000**

6.6 Acres  
Raw Land

Tract C County 18  
Brainerd MN 56401

Status: Active

**Description:**

This is a 6.6+/- acre parcel of desirable land, a mix of open and wooded area, situated near the Gull River and adjoining Minnesota Power land, with close proximity to the popular Madden's and Cragun's Resort area-fine dining and golf courses. This large lot offers potential for development or private enjoyment and benefits from a prime, sought-after location in a recreational hub. Additional lots available for total of 19+ acres. Lot subject to survey and new split.

**Additional Details:**

Lot Acres	6.6
Lot Dimensions	TBD-subject to survey and new split
School District	116
Taxes	(unreported)
Taxes with Assessments	(unreported)
Tax Year	2025

**Additional Features:**

**Driving Directions:**

From Brainerd, go west on State 210 to north on County 18, go approx 1 mile north to sign on right (north of FN 12738)



Listed By:  
Century 21 Brainerd Realty

Affinity Real Estate Inc. participates in the Regional Multiple Listing Service of Minnesota, Inc Broker Reciprocity (sm) program, allowing us to display other broker's listings on our website. All properties are subject to prior sale, change or withdrawal.



**Call Affinity Real Estate**

**218-237-3333**

**info@affinityrealestate.com**



**Affinity Real Estate - 600 Park Avenue South - Park Rapids MN 56470**



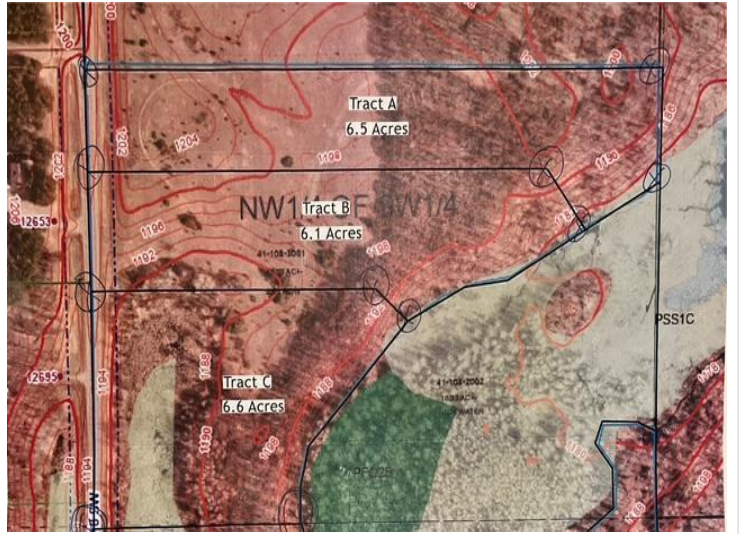


website: [www.AffinityRealEstate.com](http://www.AffinityRealEstate.com) | email: [info@affinityrealestate.com](mailto:info@affinityrealestate.com) | office: 218-237-3333 | fax: 218-237-3377



**\$100,000**  
MLS 6787791 Land  
Tract C County 18  
Brainerd MN 56401





website: [www.AffinityRealEstate.com](http://www.AffinityRealEstate.com) | email: [info@affinityrealestate.com](mailto:info@affinityrealestate.com) | office: 218-237-3333 | fax: 218-237-3377



**\$100,000**  
 MLS 6787791 Land  
 Tract C County 18  
 Brainerd MN 56401