



MLS 6787915 Residential

**\$399,900**

2,164 sq ft  
3 bedrooms  
3 baths

93 County 49  
Pine River MN 56474

Status: Active

**Description:**

3 bed 3 bath home nestled on 40 acres surrounded by excellent fishing lakes, stellar hunting, snowmobile trails and beautiful wildlife. The perfect escape from the hustle and bustle. Traditional two-story home with Cedar siding, new carpeting, new water softening system, compliant septic, new main floor bathroom with laundry hookups, all 3 bedrooms on the upper level, 3 separate living room areas, formal dining room, custom built-ins around the wood burning fireplace, and tons of storage!

This would be an excellent location and property if you are looking to make a true homestead property...Attached 29x24 garage, detached 16x26 garage and 30x20 workshop~ There is an option to purchase additional acreage available! This is a home you need to tour to see how terrific it truly is! Move in ready!

**Additional Details:**

Year Built	1990
Lot Acres	40
Lot Dimensions	1320x1320
Garage Stalls	3
School District	2174
Taxes	\$1,440
Taxes with Assessments	\$1,506
Tax Year	2024

**Additional Features:**

**Basement:** Block, Drainage System, Finished, Storage Space **Fuel:** Propane, Wood **Garage:** 3 **Heat:** Forced Air, Fireplace(s) **Sewer:** Private Sewer, Septic System Compliant - Yes **Water:** Private, Well **Air Conditioning:** Central Air

**Driving Directions:**

From Pine River - North on 84. Turn right on County 49 NW. Continue on 49 to sign and 93 on the right



Listed By:  
Northland Sotheby's International Realty

Affinity Real Estate Inc. participates in the Regional Multiple Listing Service of Minnesota, Inc Broker Reciprocity (sm) program, allowing us to display other broker's listings on our website. All properties are subject to prior sale, change or withdrawal.



**Call Affinity Real Estate**

**218-237-3333**

**info@affinityrealestate.com**



**Affinity Real Estate - 600 Park Avenue South - Park Rapids MN 56470**





website: [www.AffinityRealEstate.com](http://www.AffinityRealEstate.com) | email: [info@affinityrealestate.com](mailto:info@affinityrealestate.com) | office: 218-237-3333 | fax: 218-237-3377



**\$399,900**  
 MLS 6787915 Residential  
 93 County 49  
 Pine River MN 56474





website: [www.AffinityRealEstate.com](http://www.AffinityRealEstate.com) | email: [info@affinityrealestate.com](mailto:info@affinityrealestate.com) | office: 218-237-3333 | fax: 218-237-3377



**\$399,900**  
 MLS 6787915 Residential  
 93 County 49  
 Pine River MN 56474



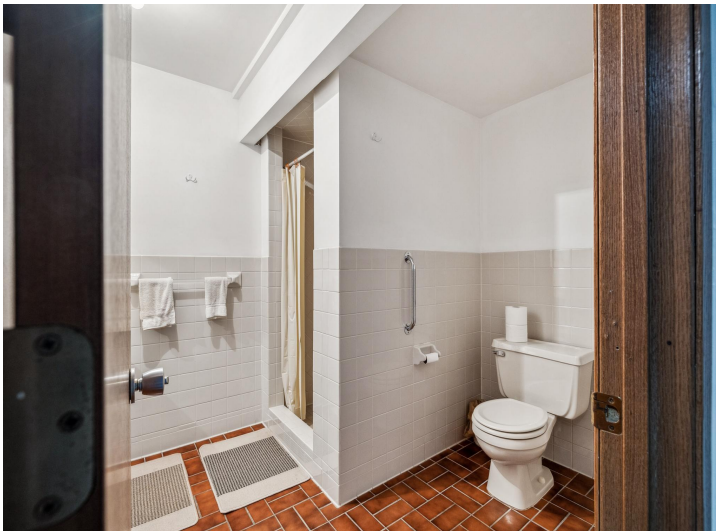


website: [www.AffinityRealEstate.com](http://www.AffinityRealEstate.com) | email: [info@affinityrealestate.com](mailto:info@affinityrealestate.com) | office: 218-237-3333 | fax: 218-237-3377



**\$399,900**  
MLS 6787915 Residential  
93 County 49  
Pine River MN 56474





website: [www.AffinityRealEstate.com](http://www.AffinityRealEstate.com) | email: [info@affinityrealestate.com](mailto:info@affinityrealestate.com) | office: 218-237-3333 | fax: 218-237-3377



**\$399,900**  
MLS 6787915 Residential  
93 County 49  
Pine River MN 56474





website: [www.AffinityRealEstate.com](http://www.AffinityRealEstate.com) | email: [info@affinityrealestate.com](mailto:info@affinityrealestate.com) | office: 218-237-3333 | fax: 218-237-3377



**\$399,900**  
 MLS 6787915 Residential  
 93 County 49  
 Pine River MN 56474



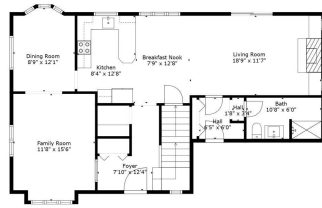


website: [www.AffinityRealEstate.com](http://www.AffinityRealEstate.com) | email: [info@affinityrealestate.com](mailto:info@affinityrealestate.com) | office: 218-237-3333 | fax: 218-237-3377



**\$399,900**  
 MLS 6787915 Residential  
 93 County 49  
 Pine River MN 56474





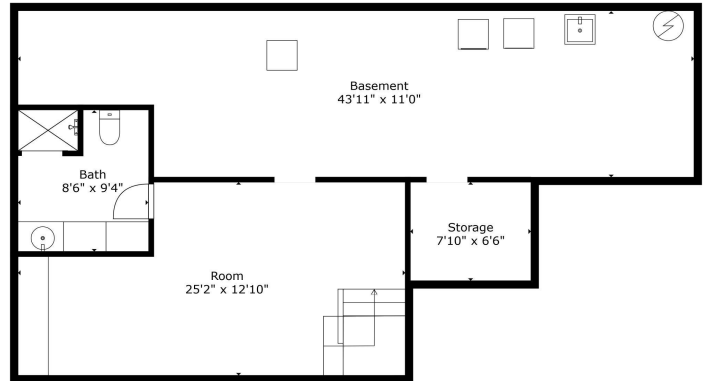
Floor 2



Floor 3

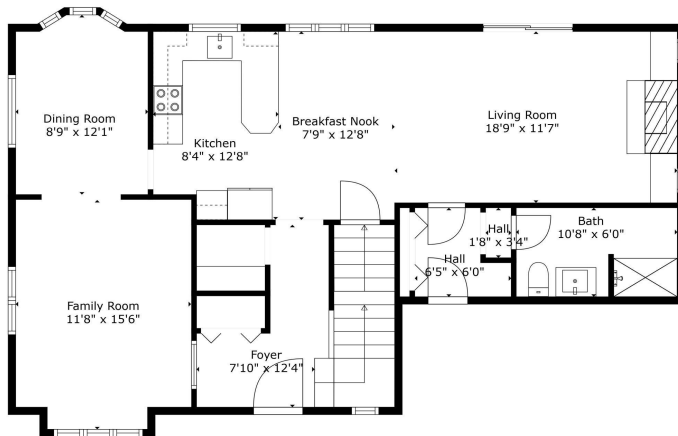


Floor 1

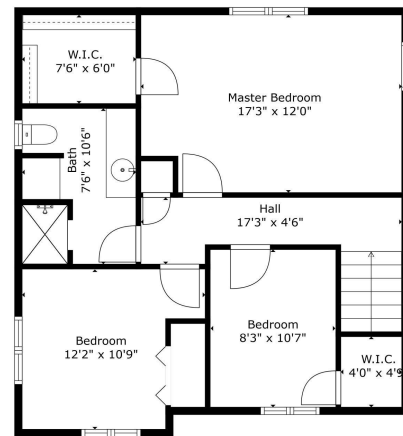


**TOTAL: 3042 sq. ft.**  
 BELOW GROUND: 375 sq. ft. FLOOR 2: 987 sq. ft. FLOOR 3: 680 sq. ft.  
 EXCLUDED AREAS: STORAGE: 54 sq. ft. BASEMENT: 442 sq. ft.  
 Floor Plan Created By Callicott App. Measurements Deemed Highly Reliable But Not Guaranteed.

**TOTAL: 3042 sq. ft.**  
 BELOW GROUND: 375 sq. ft. FLOOR 2: 987 sq. ft. FLOOR 3: 680 sq. ft.  
 EXCLUDED AREAS: STORAGE: 54 sq. ft. BASEMENT: 442 sq. ft.  
 Floor Plan Created By Callicott App. Measurements Deemed Highly Reliable But Not Guaranteed.



**TOTAL: 3042 sq. ft.**  
 BELOW GROUND: 375 sq. ft. FLOOR 2: 987 sq. ft. FLOOR 3: 680 sq. ft.  
 EXCLUDED AREAS: STORAGE: 54 sq. ft. BASEMENT: 442 sq. ft.  
 Floor Plan Created By Callicott App. Measurements Deemed Highly Reliable But Not Guaranteed.



**TOTAL: 3042 sq. ft.**  
 BELOW GROUND: 375 sq. ft. FLOOR 2: 987 sq. ft. FLOOR 3: 680 sq. ft.  
 EXCLUDED AREAS: STORAGE: 54 sq. ft. BASEMENT: 442 sq. ft.  
 Floor Plan Created By Callicott App. Measurements Deemed Highly Reliable But Not Guaranteed.

website: [www.AffinityRealEstate.com](http://www.AffinityRealEstate.com) | email: [info@affinityrealestate.com](mailto:info@affinityrealestate.com) | office: 218-237-3333 | fax: 218-237-3377



**\$399,900**  
 MLS 6787915 Residential  
 93 County 49  
 Pine River MN 56474