



MLS 6788161 Residential

**\$524,900**

2,392 sq ft  
3 bedrooms  
3 baths

454 Wagon Wheel Drive  
Bemidji MN 56601

Status: Active

**Description:**

Beautiful Lake Andrusia, part of the Cass Chain of Lakes, offers some of the best boating, fishing, and scenery in all of Northern Minnesota. This beautiful home offers 2,400 sq ft+- of lakefront living with vaulted ceilings, four season sunroom, a lofted area, a main-level master suite, gas fireplace, 3 bedrooms, 3 baths on 1.87 acres. Located in the gated common interest community, Misty Harbor, enjoy exclusive association access to a private harbor, your owned boat slip, boat launch, sandy beach, clubhouse, kayak dock, and more - all included with your CIC fees.

**Additional Details:**

Year Built	2006
Lot Acres	1.87
Lot Dimensions	507x156
Garage Stalls	2
School District	1386
Taxes	\$5,097
Taxes with Assessments	\$10,368
Tax Year	2026

**Additional Features:**

**Basement:** Crawl Space **Fuel:** Array **Garage:** 2 **Heat:** Dual Fuel/Off Peak, Forced Air, Fireplace(s) **Sewer:** Shared Septic **Water:** Private, Well  
**Air Conditioning:** Central Air

**Driving Directions:**

Follow Paul Bunyan Dr/US 2 old to Roosevelt RD SE about 8 miles. Turn Left on Stocking Lake RD SE. Follow to Wagon Wheel DR SE on right.



Listed By:  
Better Homes and Gardens Real Estate First Cho

Affinity Real Estate Inc. participates in the Regional Multiple Listing Service of Minnesota, Inc Broker Reciprocity (sm) program, allowing us to display other broker's listings on our website. All properties are subject to prior sale, change or withdrawal.



Call Affinity Real Estate

**218-237-3333**

[info@affinityrealestate.com](mailto:info@affinityrealestate.com)



Affinity Real Estate - 600 Park Avenue South - Park Rapids MN 56470



website: [www.AffinityRealEstate.com](http://www.AffinityRealEstate.com) | email: [info@affinityrealestate.com](mailto:info@affinityrealestate.com) | office: 218-237-3333 | fax: 218-237-3377



**\$524,900**  
MLS 6788161 Residential  
454 Wagon Wheel Drive  
Bemidji MN 56601



website: [www.AffinityRealEstate.com](http://www.AffinityRealEstate.com) | email: [info@affinityrealestate.com](mailto:info@affinityrealestate.com) | office: 218-237-3333 | fax: 218-237-3377

**Affinity**  
REAL ESTATE INC

**\$524,900**  
MLS 6788161 Residential  
454 Wagon Wheel Drive  
Bemidji MN 56601



website: [www.AffinityRealEstate.com](http://www.AffinityRealEstate.com) | email: [info@affinityrealestate.com](mailto:info@affinityrealestate.com) | office: 218-237-3333 | fax:218-237-3377

**Affinity**  
REAL ESTATE INC

**\$524,900**  
MLS 6788161 Residential  
454 Wagon Wheel Drive  
Bemidji MN 56601



website: [www.AffinityRealEstate.com](http://www.AffinityRealEstate.com) | email: [info@affinityrealestate.com](mailto:info@affinityrealestate.com) | office: 218-237-3333 | fax:218-237-3377

**Affinity**  
REAL ESTATE INC

**\$524,900**  
MLS 6788161 Residential  
454 Wagon Wheel Drive  
Bemidji MN 56601



website: [www.AffinityRealEstate.com](http://www.AffinityRealEstate.com) | email: [info@affinityrealestate.com](mailto:info@affinityrealestate.com) | office: 218-237-3333 | fax:218-237-3377

**Affinity**  
REAL ESTATE INC

**\$524,900**  
MLS 6788161 Residential  
454 Wagon Wheel Drive  
Bemidji MN 56601



website: [www.AffinityRealEstate.com](http://www.AffinityRealEstate.com) | email: [info@affinityrealestate.com](mailto:info@affinityrealestate.com) | office: 218-237-3333 | fax:218-237-3377



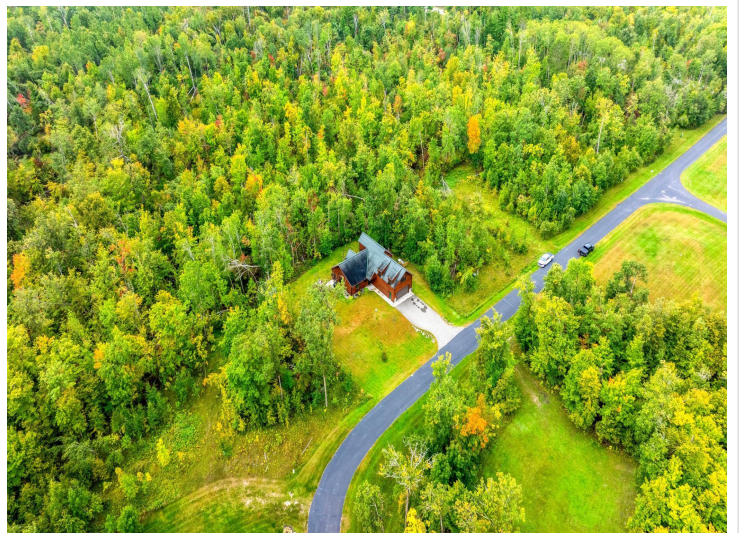
**\$524,900**  
MLS 6788161 Residential  
454 Wagon Wheel Drive  
Bemidji MN 56601



website: [www.AffinityRealEstate.com](http://www.AffinityRealEstate.com) | email: [info@affinityrealestate.com](mailto:info@affinityrealestate.com) | office: 218-237-3333 | fax:218-237-3377



**\$524,900**  
MLS 6788161 Residential  
454 Wagon Wheel Drive  
Bemidji MN 56601



website: [www.AffinityRealEstate.com](http://www.AffinityRealEstate.com) | email: [info@affinityrealestate.com](mailto:info@affinityrealestate.com) | office: 218-237-3333 | fax:218-237-3377



**\$524,900**  
MLS 6788161 Residential  
454 Wagon Wheel Drive  
Bemidji MN 56601



website: [www.AffinityRealEstate.com](http://www.AffinityRealEstate.com) | email: [info@affinityrealestate.com](mailto:info@affinityrealestate.com) | office: 218-237-3333 | fax:218-237-3377



**\$524,900**  
MLS 6788161 Residential  
454 Wagon Wheel Drive  
Bemidji MN 56601