



MLS 6788179 Residential

**\$340,000**

1,508 sq ft  
2 bedrooms  
1 baths

102 Pottery Drive  
Ottertail MN 56571

Status: Active

**Description:**

Welcome to an exceptional real estate opportunity at one of the busiest intersections in the county. This newly renovated property, offering unlimited possibilities in a prime location, is a perfect blend of commercial and residential potential.

Step inside this versatile space where everything is new. The main building has been completely renovated from the ground up, featuring a brand-new sewer system, and a new 25x60-foot concrete slab that offers a solid foundation for future expansion or parking. The interior boasts a modern kitchen with all-new Whirlpool appliances and cabinets with soft-close drawers.

A 12x20-foot garage with its own door adds another layer of versatility. This space could easily be converted into an additional office to support a growing business, a spacious master bedroom for a residential dwelling, or kept as a garage for storage.

This property is a blank canvas, ready for you to turn your vision into reality. With almost an acre another building could be built to suit. Whether you're an entrepreneur looking for the perfect commercial hub or a homeowner seeking a modern, custom space in a highly desirable location, this property is ready!

**Additional Details:**

Year Built	1999
Lot Acres	0.78
Lot Dimensions	138x203
Garage Stalls	1
School District	549
Taxes	\$1,174
Taxes with Assessments	\$1,174
Tax Year	2025

**Additional Features:**

**Basement:** Other **Fuel:** Natural Gas **Garage:** 1 **Heat:** Forced Air **Sewer:** Septic System Compliant - Yes **Water:** Well **Air Conditioning:** Central



Listed By:  
Real Broker, LLC

Affinity Real Estate, Inc. is a member of the Real Estate Multiple Listing Service of Minnesota, Inc Broker Reciprocity (sm) program, allowing us to display other broker's listings on our website. All properties are subject to prior sale, change or withdrawal.



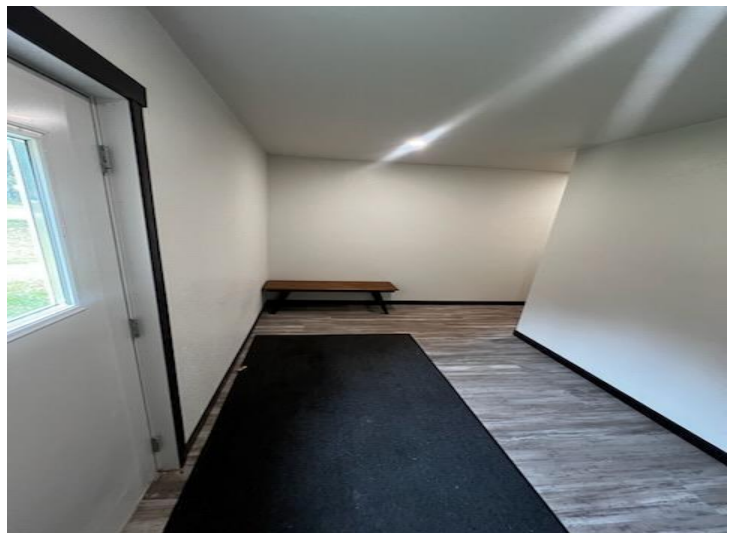
**Call Affinity Real Estate**

**218-237-3333**

**info@affinityrealestate.com**



**Affinity Real Estate - 600 Park Avenue South - Park Rapids MN 56470**

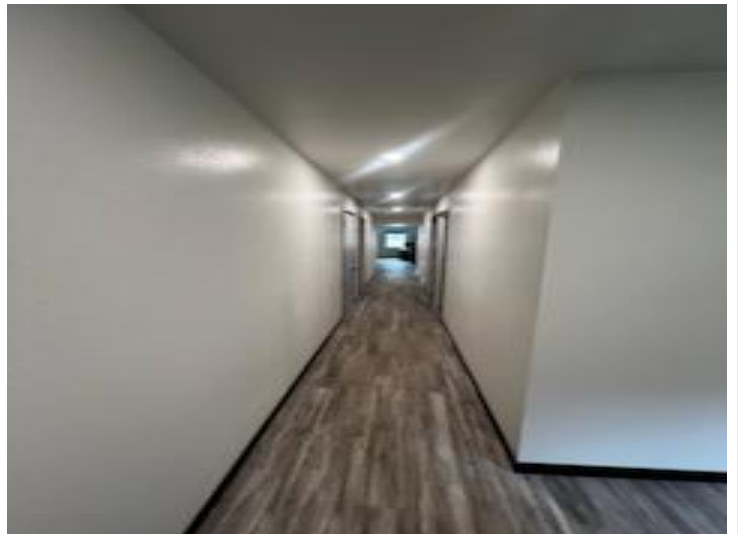
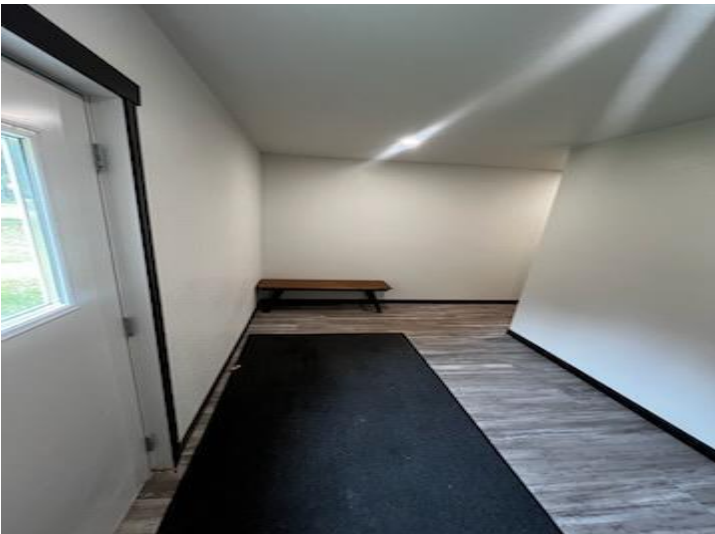


website: [www.AffinityRealEstate.com](http://www.AffinityRealEstate.com) | email: [info@affinityrealestate.com](mailto:info@affinityrealestate.com) | office: 218-237-3333 | fax: 218-237-3377



**\$340,000**  
MLS 6788179 Residential  
102 Pottery Drive  
Ottertail MN 56571





website: [www.AffinityRealEstate.com](http://www.AffinityRealEstate.com) | email: [info@affinityrealestate.com](mailto:info@affinityrealestate.com) | office: 218-237-3333 | fax: 218-237-3377



**\$340,000**  
MLS 6788179 Residential  
102 Pottery Drive  
Ottertail MN 56571



website: [www.AffinityRealEstate.com](http://www.AffinityRealEstate.com) | email: [info@affinityrealestate.com](mailto:info@affinityrealestate.com) | office: 218-237-3333 | fax: 218-237-3377



**\$340,000**  
 MLS 6788179 Residential  
 102 Pottery Drive  
 Ottertail MN 56571



website: [www.AffinityRealEstate.com](http://www.AffinityRealEstate.com) | email: [info@affinityrealestate.com](mailto:info@affinityrealestate.com) | office: 218-237-3333 | fax:218-237-3377



**\$340,000**  
MLS 6788179 Residential  
102 Pottery Drive  
Ottertail MN 56571