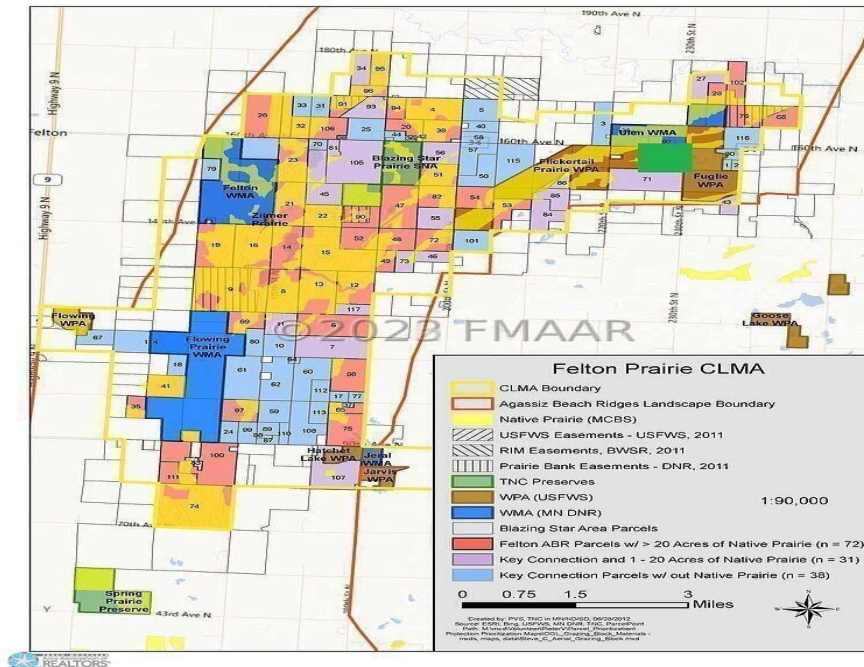




MLS 6788629 Lake Land

**\$495,000**



#### Description:

Discover the serenity of this 152.5-acre haven, featuring a fully restored prairie in a permanent RIM easement. Embrace the 7.5-acre buildable site, surrounded by privately protected land to the south and bordered by MN DNR and USFW land to the north, east, and west. With private woods, wetlands, and proximity to Flickertail Prairie WPA, Ulen WMA, and Fuglie WPA, this parcel offers abundant wildlife. Immerse yourself in nature, with endless opportunities for deer, small game, and waterfowl activities. Live harmoniously at the heart of a thriving 1500+ acre nature preserve, just under 40 minutes from the F/M, nestled in the Felton Prairie CLMA's northeastern embrace.

#### Additional Details:

Lot Acres	160
Lot Dimensions	Irregular
School District	914
Taxes	\$548
Taxes with Assessments	\$548
Tax Year	2025

#### Additional Features:

#### Driving Directions:

See Google Maps



Listed By:  
Park Co., REALTORS®

Affinity Real Estate Inc. participates in the Regional Multiple Listing Service of Minnesota, Inc Broker Reciprocity (sm) program, allowing us to display other broker's listings on our website. All properties are subject to prior sale, change or withdrawal.



Call Affinity Real Estate

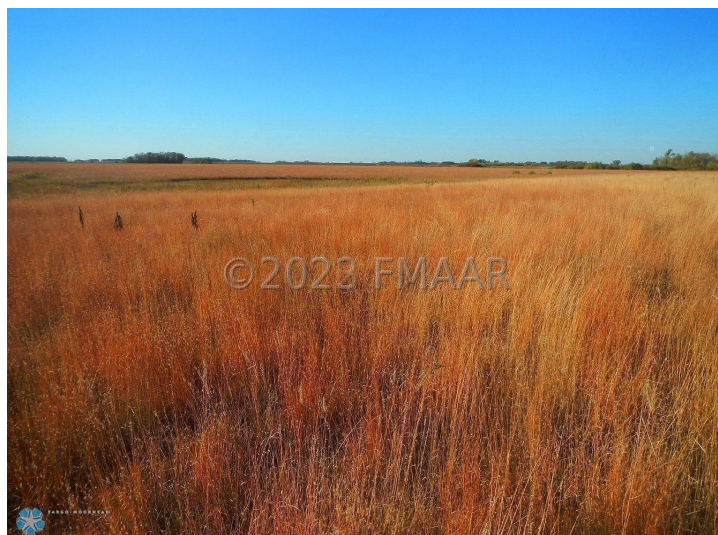
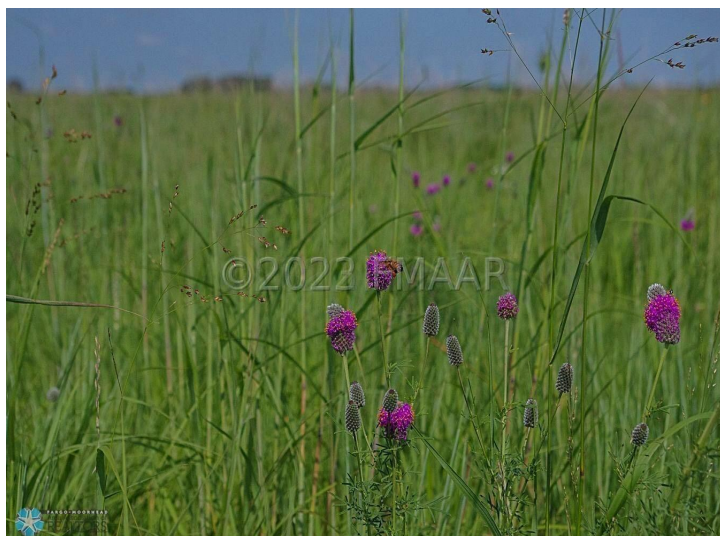
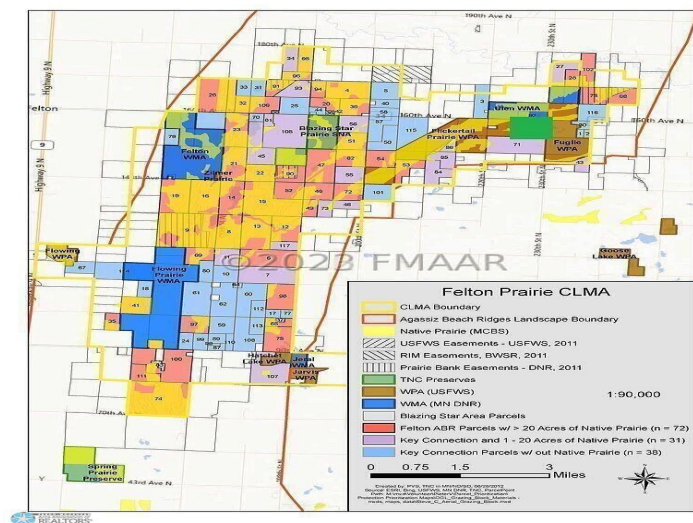
**218-237-3333**

[info@affinityrealestate.com](mailto:info@affinityrealestate.com)



Affinity Real Estate - 600 Park Avenue South - Park Rapids MN 56470





website: [www.AffinityRealEstate.com](http://www.AffinityRealEstate.com) | email: [info@affinityrealestate.com](mailto:info@affinityrealestate.com) | office: 218-237-3333 | fax: 218-237-3377



**\$495,000**

MLS 6788629 Lake Land

Ulen MN 56585



