



MLS 6789026 Lake Home

\$750,000

4,726 sq ft
6 bedrooms
4 baths

15419 Lake Avenue
Brainerd MN 56401

Waterfront: South Long

Status: Coming Soon

Description:

Exceptional Brainerd property offering generous indoor and outdoor living spaces. This home features 6 bedrooms, 4 bathrooms, a home office, loft, and two impressive floor-to-ceiling stone gas fireplaces. Expansive windows provide serene views of surrounding wildlife, while the spacious deck and walkout basement with in-floor heat open to a large patio area for outdoor enjoyment. The kitchen is appointed with quartz countertops, and the main floor layout ensures convenient living. Additional amenities include an attached heated garage, pool table, dumbwaiter, and high-speed fiber optic internet. Situated on 3+ wooded acres, the property provides ample space for a future garage or pole building.

New Owners enjoy shared access to South Long Lake directly across the street, offering opportunities for boating, fishing, swimming, and recreation. Ideally located near Brainerd's shopping, dining, golf, and year-round outdoor activities, this property combines privacy, comfort, and convenience.

Additional Details:

Year Built	2001
Lot Acres	3.22
Lot Dimensions	327x413x328x450
Garage Stalls	2
School District	181
Taxes	\$3,492
Taxes with Assessments	\$3,492
Tax Year	2024

Additional Features:

Basement: Drain Tiled, Drainage System, Egress Window(s), Finished, Storage Space, Sump Basket, Sump Pump, Walkout **Fuel:** Propane
Garage: 2 **Heat:** Boiler, Forced Air, Fireplace(s), Radiant Floor **Sewer:** Septic System Compliant - Yes, Tank with Drainage Field **Water:** Well **Air Conditioning:** Central Air

Driving Directions:

Hwy 25 South from Brainerd, left on County Road 22, left on Paradise Beach Road, right on Lake Ave, house on left.



Listed By:
Executive Realty Inc.

Affinity Real Estate Inc. participates in the Regional Multiple Listing Service of Minnesota, Inc Broker Reciprocity (sm) program, allowing us to display other broker's listings on our website. All properties are subject to prior sale, change or withdrawal.



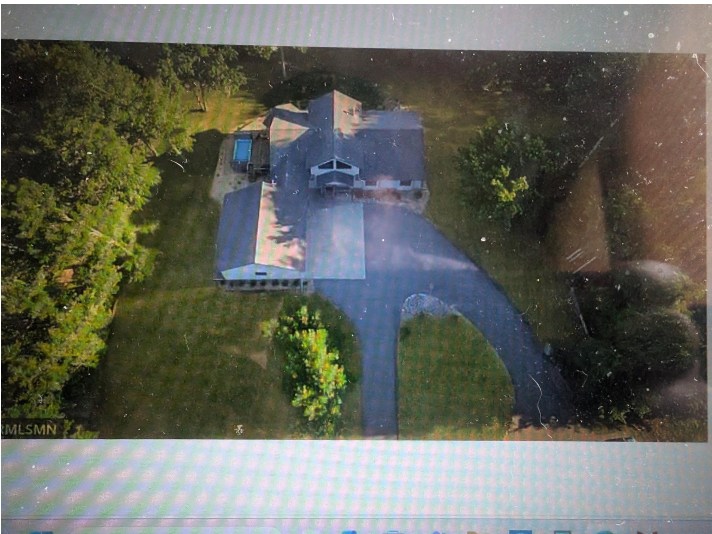
Call Affinity Real Estate

218-237-3333

info@affinityrealestate.com



Affinity Real Estate - 600 Park Avenue South - Park Rapids MN 56470



website: www.AffinityRealEstate.com | email: info@affinityrealestate.com | office: 218-237-3333 | fax: 218-237-3377



\$750,000
 MLS 6789026 Lake Home
 15419 Lake Avenue
 Brainerd MN 56401