



MLS 6789091 Residential

\$519,000

2,108 sq ft
2 bedrooms
2 baths

52568 180th Street
Osage MN 56570

Status: Active

Description:

You won't want to miss this custom-built home on the edge of the beautiful Smoky Hills State Forest. Encompassing 37.5 acres of rolling hills and old growth woods. 5 acres of pasture and 36X40 barn make this property perfect for hobby farming. Crafted with artistry, this 2-bedroom, 2-bath home has an open-concept floor plan featuring a loft, vaulted ceilings, striking exposed beams, and rich wood accents that create a warm, inviting atmosphere. A full wrap-around porch shows off all the stunning views. Relax in the basement sauna, watch movies in the brick walled family room with attached bar area or sit by the fireplace with family and friends. The basement offers a great storage room for all your household and canning needs. In addition to the home and barn the property has a 2-car garage and additional shop area (concrete poured and framing started) to be finished as desired. Located less than 10 minutes to Wolf Lake, and less than 20 minutes to Park Rapids and Menahga.

Additional Details:

Year Built	2014
Lot Acres	37.5
Lot Dimensions	1195x1300
School District	821
Taxes	\$2,304
Taxes with Assessments	\$2,364
Tax Year	2025

Additional Features:

Fuel: Electric, Wood **Heat:** Boiler, Fireplace(s), Radiant

Driving Directions:

From 71/34 in Park Rapids: West on 34 for 10 Miles to a left onto County Hwy 47, follow for 6 miles to a right onto 180th St., Continue for 1.4 Miles to the property on the right.



Listed By:
Wolff & Simon Real Estate

Affinity Real Estate Inc. participates in the Regional Multiple Listing Service of Minnesota, Inc Broker Reciprocity (sm) program, allowing us to display other broker's listings on our website. All properties are subject to prior sale, change or withdrawal.



Call Affinity Real Estate

218-237-3333

info@affinityrealestate.com



Affinity Real Estate - 600 Park Avenue South - Park Rapids MN 56470



website: www.AffinityRealEstate.com | email: info@affinityrealestate.com | office: 218-237-3333 | fax:218-237-3377



\$519,000
MLS 6789091 Residential
52568 180th Street
Osage MN 56570



website: www.AffinityRealEstate.com | email: info@affinityrealestate.com | office: 218-237-3333 | fax:218-237-3377

Affinity
REAL ESTATE INC

\$519,000
MLS 6789091 Residential
52568 180th Street
Osage MN 56570



website: www.AffinityRealEstate.com | email: info@affinityrealestate.com | office: 218-237-3333 | fax: 218-237-3377

Affinity
REAL ESTATE INC

\$519,000
MLS 6789091 Residential
52568 180th Street
Osage MN 56570



website: www.AffinityRealEstate.com | email: info@affinityrealestate.com | office: 218-237-3333 | fax:218-237-3377

Affinity
REAL ESTATE INC

\$519,000
MLS 6789091 Residential
52568 180th Street
Osage MN 56570



website: www.AffinityRealEstate.com | email: info@affinityrealestate.com | office: 218-237-3333 | fax: 218-237-3377

Affinity
REAL ESTATE INC

\$519,000
MLS 6789091 Residential
52568 180th Street
Osage MN 56570



website: www.AffinityRealEstate.com | email: info@affinityrealestate.com | office: 218-237-3333 | fax:218-237-3377

Affinity
REAL ESTATE INC

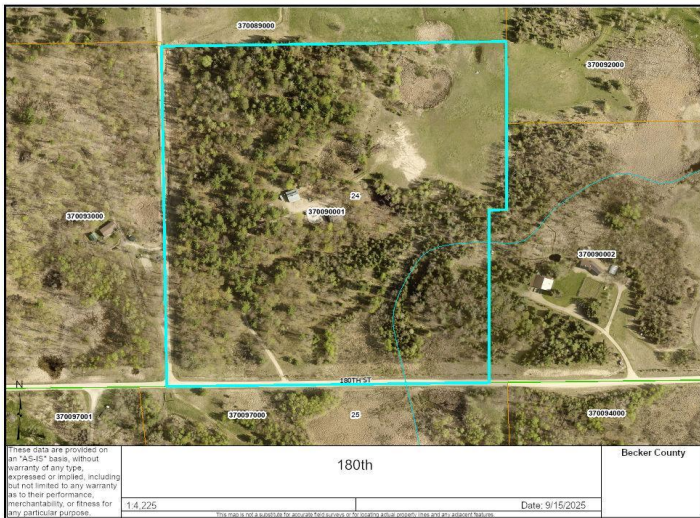
\$519,000
MLS 6789091 Residential
52568 180th Street
Osage MN 56570



website: www.AffinityRealEstate.com | email: info@affinityrealestate.com | office: 218-237-3333 | fax:218-237-3377



\$519,000
MLS 6789091 Residential
52568 180th Street
Osage MN 56570



website: www.AffinityRealEstate.com | email: info@affinityrealestate.com | office: 218-237-3333 | fax: 218-237-3377



\$519,000
MLS 6789091 Residential
52568 180th Street
Osage MN 56570