



MLS 6789505 Residential

\$242,000

1,664 sq ft
3 bedrooms
1 baths

1611 Mary Street
Brainerd MN 56401

Status: Active

Description:

UPDATED & CHARMING 3 BR Home in Favorable Area of South Brainerd! You'll LOVE the Wood Floors, Remodeled Kitchen & Bathroom, Back Screened Porch for morning coffee, to keep an eye on kiddos in the backyard, or evening game nights! Garage is insulated & oversized with workbench space. The Lower Level features a Nicely Finished Family Room Area, Large Laundry/Storage Space, and good-sized 3rd Bedroom. Property butts up to City land, so nicely wooded in the back. ROOF, GUTTERS & AC NEW in 2021 & 2022! ALL WINDOWS NEW 2023! THIS IS ONE TO CHECK OUT!

Additional Details:

Year Built	1951
Lot Acres	0.15
Lot Dimensions	132x50x126x50
Garage Stalls	1
School District	181
Taxes	\$1,939
Taxes with Assessments	\$1,964
Tax Year	2025

Additional Features:

Fuel: Natural Gas **Heat:** Forced Air

Driving Directions:

From Brainerd old water tower, go south on S. 6th St (avoiding road closure/construction) to Right onto Vine St to Left onto S 4th St to Left onto Mary St to property on the Left.



Listed By:
Weichert REALTORS Tower Properties

Affinity Real Estate Inc. participates in the Regional Multiple Listing Service of Minnesota, Inc Broker Reciprocity (sm) program, allowing us to display other broker's listings on our website. All properties are subject to prior sale, change or withdrawal.



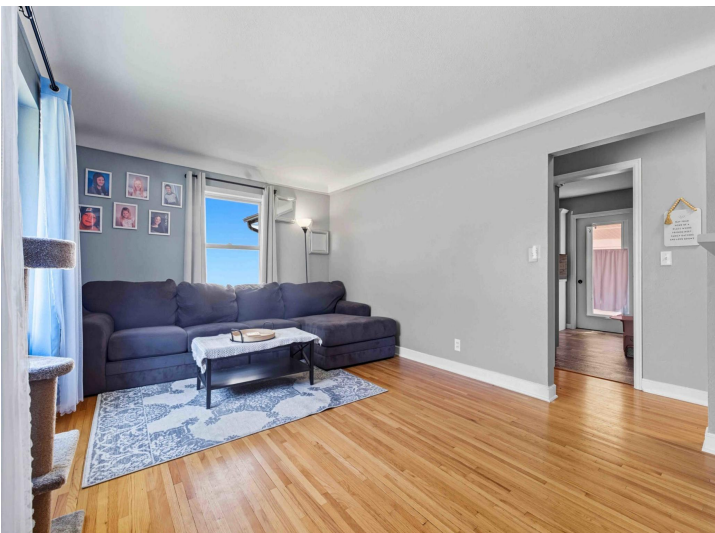
Call Affinity Real Estate

218-237-3333

info@affinityrealestate.com



Affinity Real Estate - 600 Park Avenue South - Park Rapids MN 56470



website: www.AffinityRealEstate.com | email: info@affinityrealestate.com | office: 218-237-3333 | fax: 218-237-3377

Affinity
REAL ESTATE INC

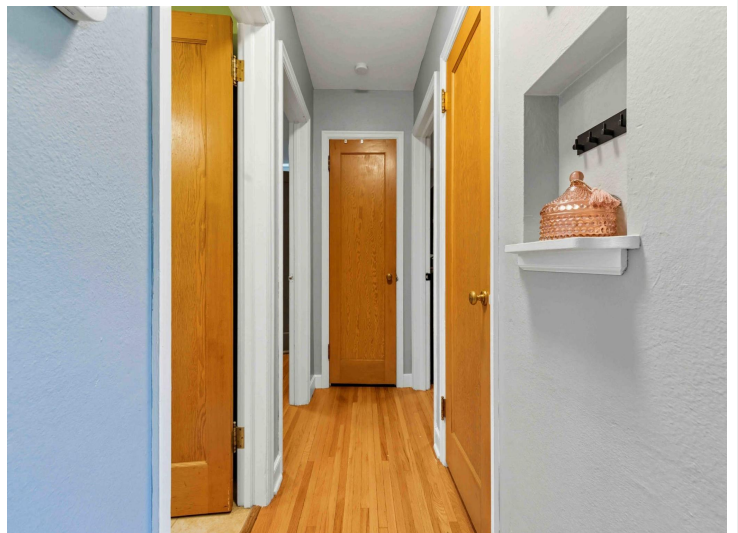
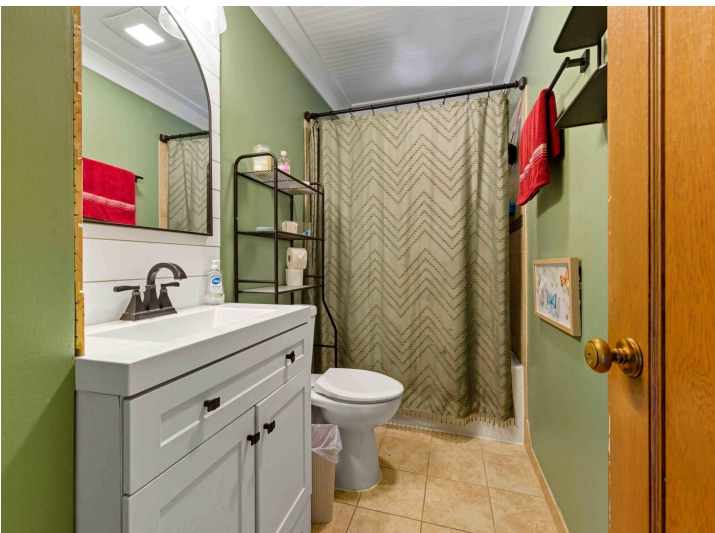
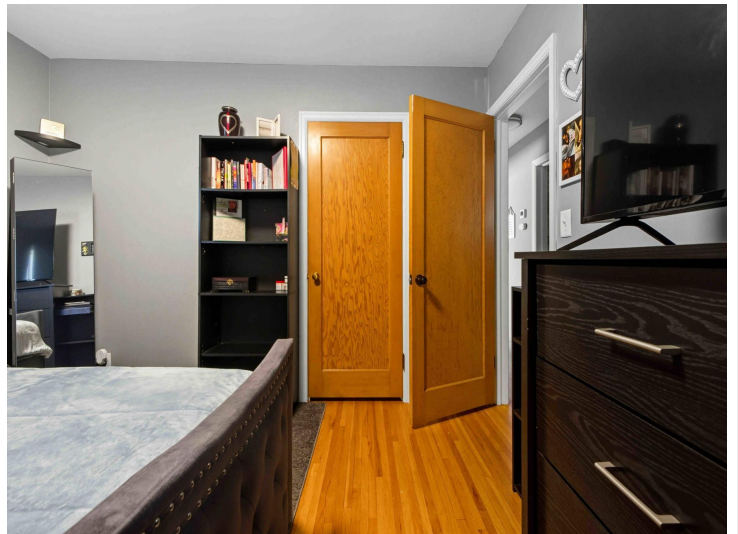
\$242,000
MLS 6789505 Residential
1611 Mary Street
Brainerd MN 56401



website: www.AffinityRealEstate.com | email: info@affinityrealestate.com | office: 218-237-3333 | fax: 218-237-3377

Affinity
REAL ESTATE INC

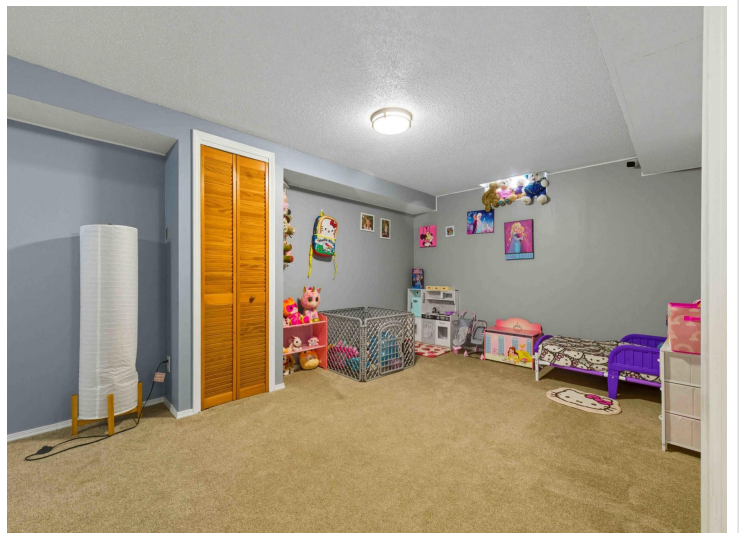
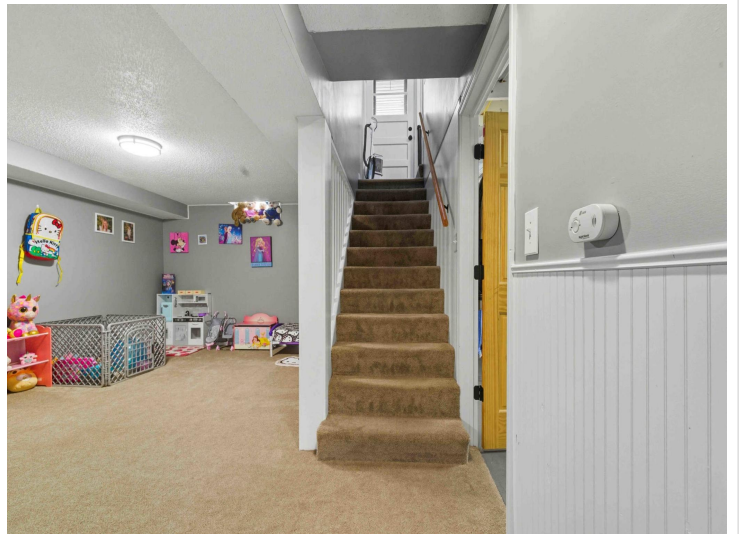
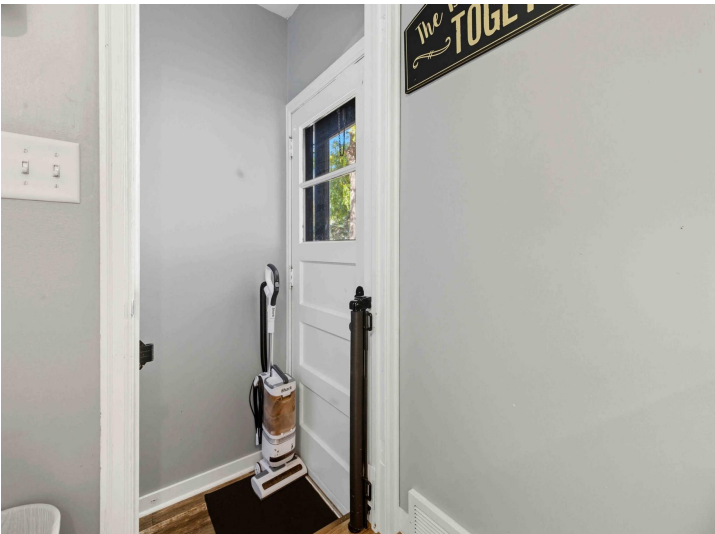
\$242,000
MLS 6789505 Residential
1611 Mary Street
Brainerd MN 56401



website: www.AffinityRealEstate.com | email: info@affinityrealestate.com | office: 218-237-3333 | fax: 218-237-3377

Affinity
REAL ESTATE INC

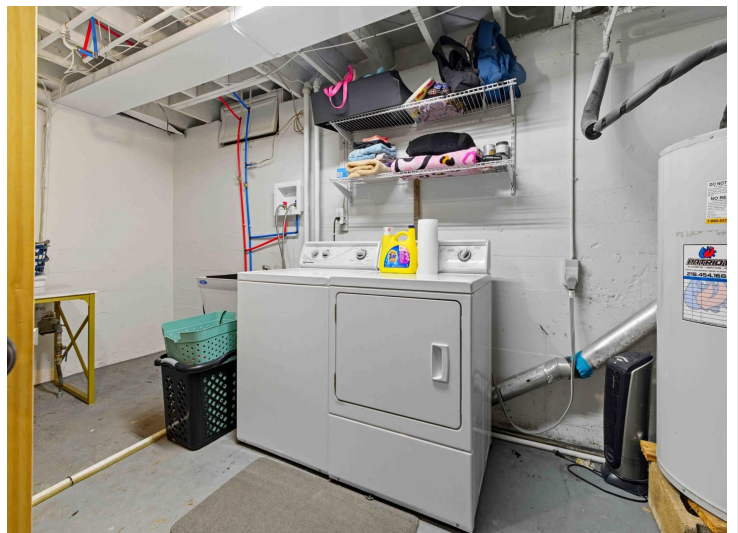
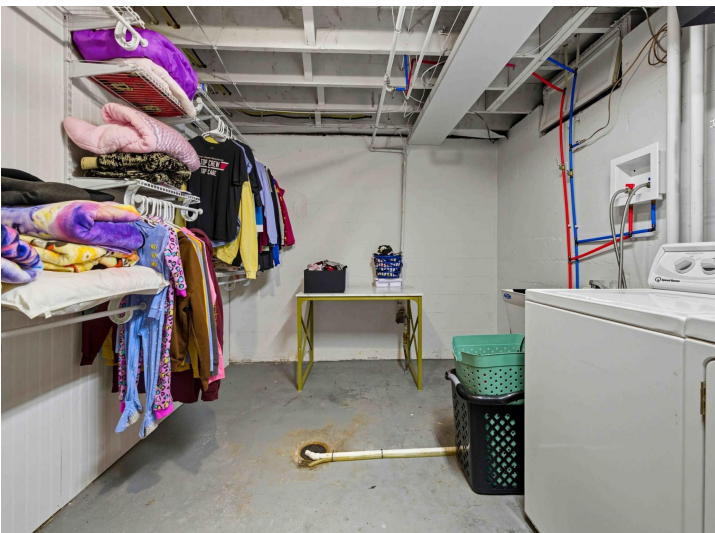
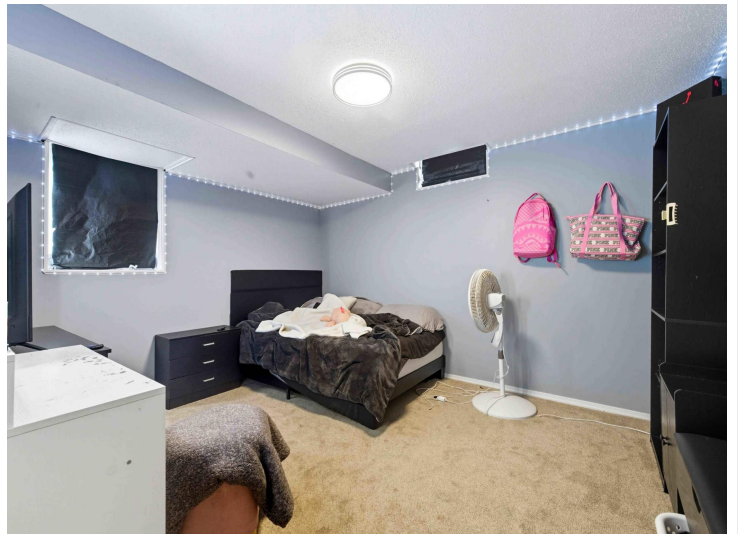
\$242,000
MLS 6789505 Residential
1611 Mary Street
Brainerd MN 56401



website: www.AffinityRealEstate.com | email: info@affinityrealestate.com | office: 218-237-3333 | fax: 218-237-3377



\$242,000
MLS 6789505 Residential
1611 Mary Street
Brainerd MN 56401



website: www.AffinityRealEstate.com | email: info@affinityrealestate.com | office: 218-237-3333 | fax: 218-237-3377

Affinity
REAL ESTATE INC

\$242,000
MLS 6789505 Residential
1611 Mary Street
Brainerd MN 56401



website: www.AffinityRealEstate.com | email: info@affinityrealestate.com | office: 218-237-3333 | fax:218-237-3377



\$242,000
MLS 6789505 Residential
1611 Mary Street
Brainerd MN 56401

website: www.AffinityRealEstate.com | email: info@affinityrealestate.com | office: 218-237-3333 | fax:218-237-3377



\$242,000
MLS 6789505 Residential
1611 Mary Street
Brainerd MN 56401