



MLS 6789611 Residential

\$349,900

2,144 sq ft
4 bedrooms
2 baths

12854 First Street
Baxter MN 56425

Status: Coming Soon

Description:

****Open House Saturday 9/20 from 11-1****

****Professional interior photos and virtual tour coming soon****

Very well kept 4BR/2BA home in a great Baxter neighborhood. Just steps away from Southdale Park, and very close to Baxter Elementary and Forestview Middle School. 2 car attached garage, fully finished basement, and a fenced backyard. Come take a look at this great home.

Additional Details:

Year Built	1990
Lot Acres	0.56
Lot Dimensions	157x165x137x168
Garage Stalls	2
School District	181
Taxes	\$2,723
Taxes with Assessments	\$2,748
Tax Year	2025

Additional Features:

Basement: Finished, Full **Fuel:** Electric, Natural Gas **Garage:** 2 **Heat:** Forced Air **Sewer:** City Sewer/Connected **Water:** City Water/Connected
Air Conditioning: Central Air

Driving Directions:

West on MN 210, left onto CR 48 to right onto Ashdale, left onto First Street, property is on the left.



Listed By:
Positive Realty

Affinity Real Estate Inc. participates in the Regional Multiple Listing Service of Minnesota, Inc Broker Reciprocity (sm) program, allowing us to display other broker's listings on our website. All properties are subject to prior sale, change or withdrawal.



Call Affinity Real Estate

218-237-3333

info@affinityrealestate.com

MLS



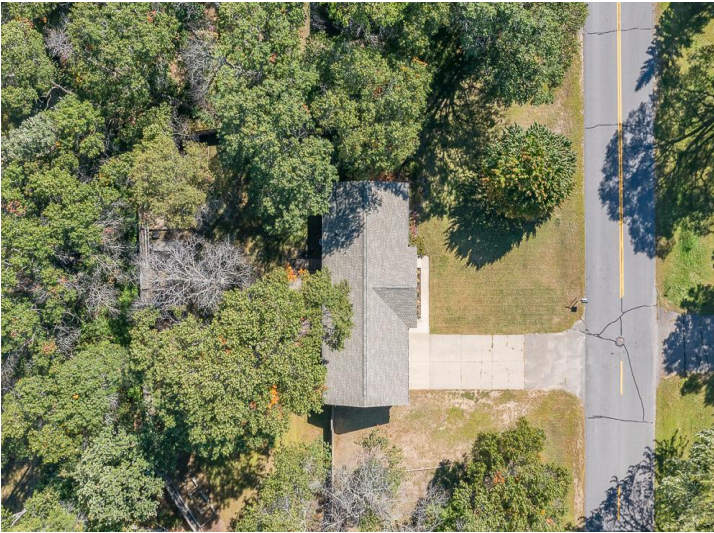
Affinity Real Estate - 600 Park Avenue South - Park Rapids MN 56470



website: www.AffinityRealEstate.com | email: info@affinityrealestate.com | office: 218-237-3333 | fax: 218-237-3377

Affinity
REAL ESTATE INC

\$349,900
MLS 6789611 Residential
12854 First Street
Baxter MN 56425



website: www.AffinityRealEstate.com | email: info@affinityrealestate.com | office: 218-237-3333 | fax: 218-237-3377



\$349,900
 MLS 6789611 Residential
 12854 First Street
 Baxter MN 56425