



MLS 6789699 Land

\$130,900

10.63 Acres
Raw Land

28XX 110th Street
Barnesville MN 56514

Status: Active

Description:

Looking for acreage and the perfect spot to build your dream home 'in the country'? This is your opportunity! This 10.63 acre property located just outside of Barnesville is the perfect blend of rural living while also being just a short drive to schools, groceries/gas, and other amenities! Located just a couple miles south of Barnesville, or a quick 30 min. drive to Fargo/Moorhead!

Additional Details:

Lot Acres	10.63
Lot Dimensions	1000 x 550 x 775 x 550
School District	146
Taxes	\$675
Taxes with Assessments	\$712
Tax Year	2025

Additional Features:

Driving Directions:

Parcel to the west of 2887 110th St, Barnesville (for google map directions)



Listed By:
REAL (1531 FGO)

Affinity Real Estate Inc. participates in the Regional Multiple Listing Service of Minnesota, Inc Broker Reciprocity (sm) program, allowing us to display other broker's listings on our website. All properties are subject to prior sale, change or withdrawal.



Call Affinity Real Estate

218-237-3333

info@affinityrealestate.com



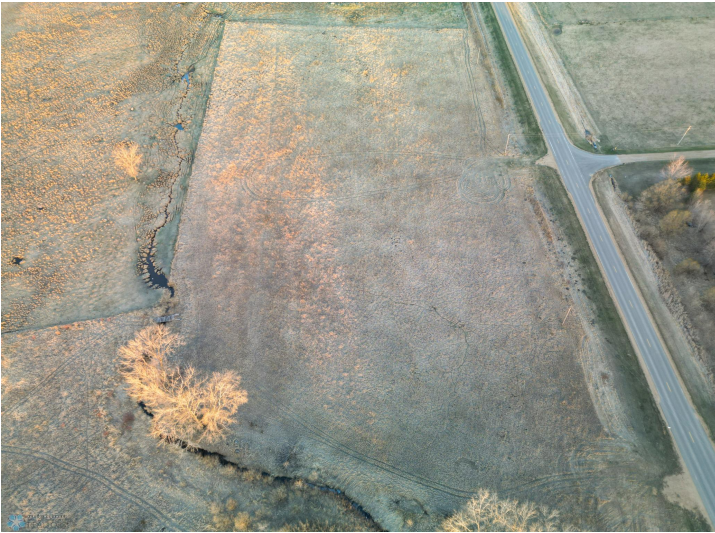
Affinity Real Estate - 600 Park Avenue South - Park Rapids MN 56470



website: www.AffinityRealEstate.com | email: info@affinityrealestate.com | office: 218-237-3333 | fax: 218-237-3377

Affinity
REAL ESTATE INC

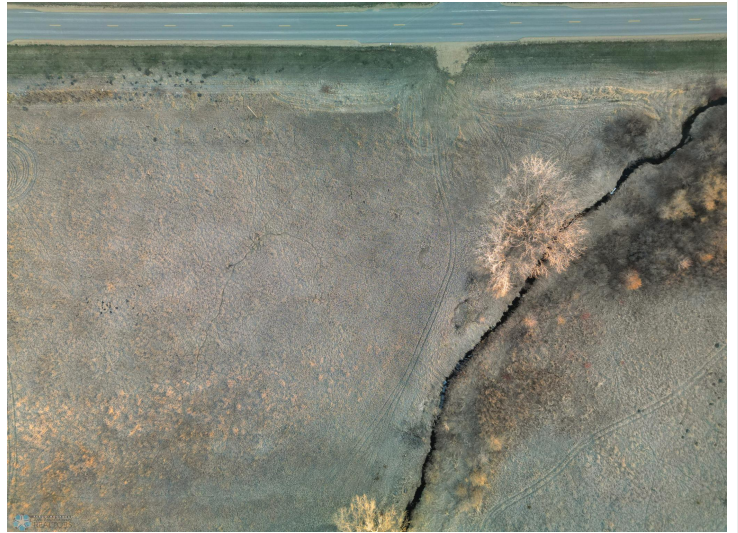
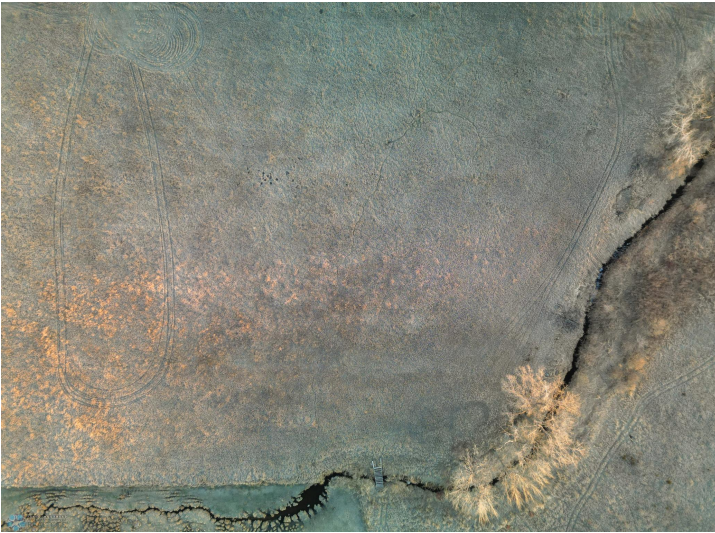
\$130,900
MLS 6789699 Land
28XX 110th Street
Barnesville MN 56514



website: www.AffinityRealEstate.com | email: info@affinityrealestate.com | office: 218-237-3333 | fax: 218-237-3377



\$130,900
 MLS 6789699 Land
 28XX 110th Street
 Barnesville MN 56514



website: www.AffinityRealEstate.com | email: info@affinityrealestate.com | office: 218-237-3333 | fax: 218-237-3377



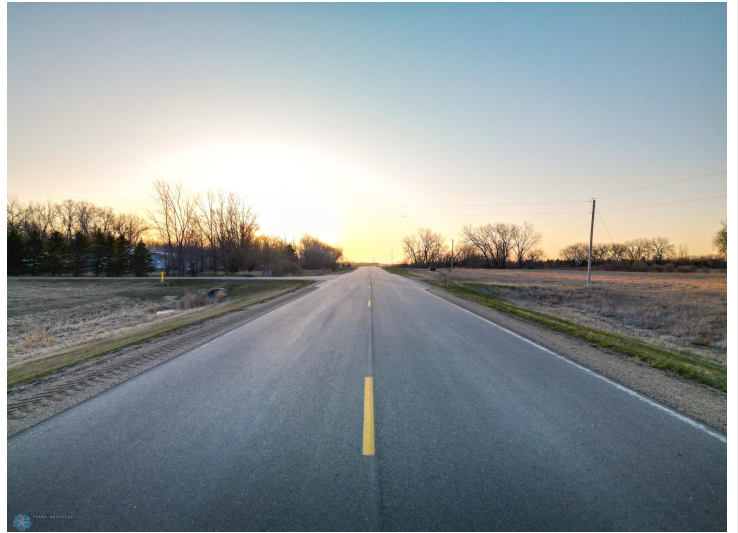
\$130,900
MLS 6789699 Land
28XX 110th Street
Barnesville MN 56514



website: www.AffinityRealEstate.com | email: info@affinityrealestate.com | office: 218-237-3333 | fax: 218-237-3377



\$130,900
MLS 6789699 Land
28XX 110th Street
Barnesville MN 56514



website: www.AffinityRealEstate.com | email: info@affinityrealestate.com | office: 218-237-3333 | fax: 218-237-3377



\$130,900
MLS 6789699 Land
28XX 110th Street
Barnesville MN 56514

website: www.AffinityRealEstate.com | email: info@affinityrealestate.com | office: 218-237-3333 | fax:218-237-3377



\$130,900
MLS 6789699 Land
28XX 110th Street
Barnesville MN 56514