



MLS 6789812 Residential

\$699,900

3,277 sq ft
6 bedrooms
3 baths

TBD Firewatch Way
Pequot Lakes MN 56472

Status: Pending

Description:

To be built- 5 bed 3 bath new construction home on a beautiful one-acre lot surrounded by trees in the highly desired Pequot Lakes school district. This brand-new, beautifully designed home offers a luxurious and spacious living experience, featuring an additional office perfect for working from home or a quiet retreat. The main floor primary suite offers privacy and comfort, also double sinks and a walk-in closet and custom tiled shower. The open concept design boasts 9-foot ceilings throughout, creating a light and airy atmosphere. The heart of the home is the stunning kitchen, with a generous island that provides ample storage, and beautiful quartz countertops. The pantry offers even more space to keep everything organized. Gorgeous, engineered wood flooring flows seamlessly throughout the home. Experience the comfort of in-floor heating throughout, ensuring that the entire home remains cozy year-round. The spacious living room features a gas fireplace, perfect for enjoying cozy evenings. Upstairs, a bonus room awaits, offering additional space for entertainment or relaxation. The home is finished with durable LP siding and striking black-on-black Marvin windows, cedar shakes, and a side entry 3 stall garage. With thoughtful attention to detail and high-quality finishes throughout, this home offers both ease and style in a prime location.

Additional Details:

Year Built	2026
Lot Acres	1
Lot Dimensions	215x204x200x250
Garage Stalls	3
School District	186
Taxes	\$66
Taxes with Assessments	\$66
Tax Year	2024

Additional Features:

Basement: None **Fuel:** Natural Gas **Garage:** 3 **Heat:** Forced Air, Fireplace(s), Radiant Floor **Sewer:** Septic System Compliant - Yes, Tank with Drainage Field **Water:** Drilled, Private, Well **Air Conditioning:** Central Air

Driving Directions:

From the streetlight intersection in Pequot Lakes (Patriot Ave & CR 110) go south on CR 110 for 1.1 miles.



Listed By:
Northland Sotheby's International Realty

Affinity Real Estate Inc. participates in the Regional Multiple Listing Service of Minnesota, Inc Broker Reciprocity (sm) program, allowing us to display other broker's listings on our website. All properties are subject to prior sale, change or withdrawal.



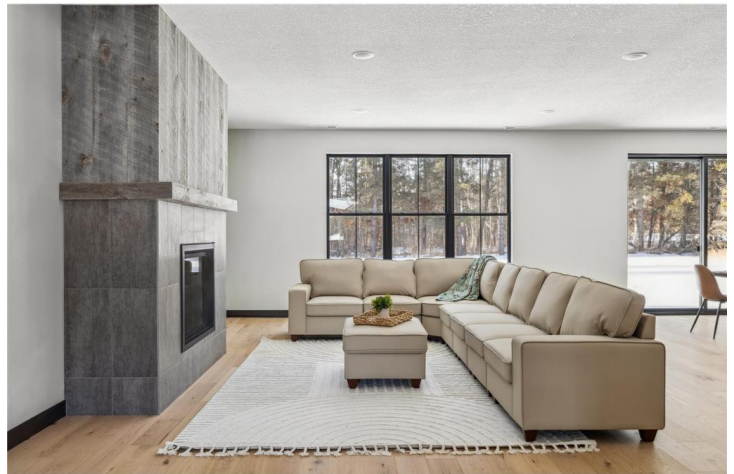
Call Affinity Real Estate for a-bouts - Property

218-237-3333

info@affinityrealestate.com



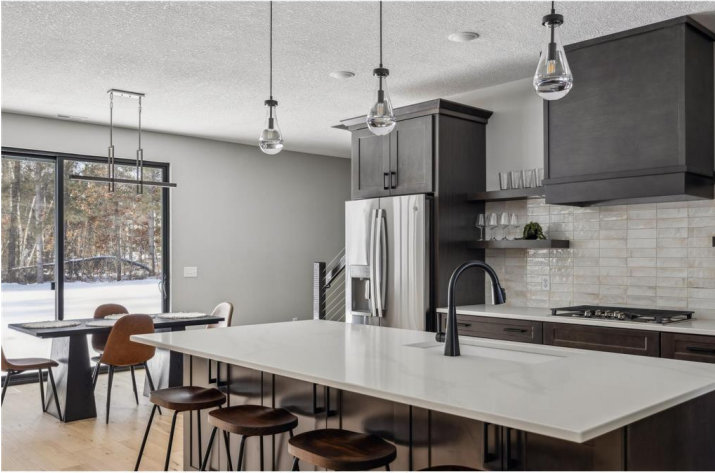
Affinity Real Estate - 600 Park Avenue South - Park Rapids MN 56470



website: www.AffinityRealEstate.com | email: info@affinityrealestate.com | office: 218-237-3333 | fax: 218-237-3377



\$699,900
MLS 6789812 Residential
TBD Firewatch Way
Pequot Lakes MN 56472



website: www.AffinityRealEstate.com | email: info@affinityrealestate.com | office: 218-237-3333 | fax:218-237-3377



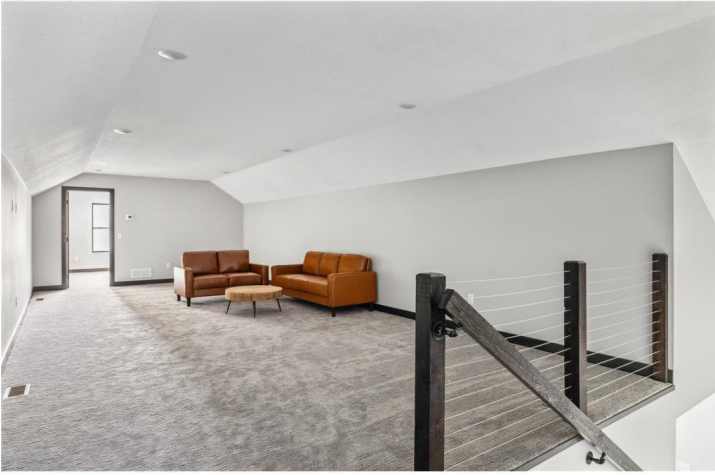
\$699,900
MLS 6789812 Residential
TBD Firewatch Way
Pequot Lakes MN 56472



website: www.AffinityRealEstate.com | email: info@affinityrealestate.com | office: 218-237-3333 | fax: 218-237-3377

Affinity
REAL ESTATE INC

\$699,900
MLS 6789812 Residential
TBD Firewatch Way
Pequot Lakes MN 56472



website: www.AffinityRealEstate.com | email: info@affinityrealestate.com | office: 218-237-3333 | fax:218-237-3377



\$699,900
MLS 6789812 Residential
TBD Firewatch Way
Pequot Lakes MN 56472