



MLS 6790352 Residential

\$795,000

2,673 sq ft
3 bedrooms
3 baths

9222 21st Avenue
Nisswa MN 56468

Status: Hold

Description:

A TRUE SPORTSMAN'S PARADISE! This fabulous 80+ acre heavily wooded year-round retreat is situated in the heart of the Lakes Area and only minutes from the Gull Lake Chain...it abuts 440 acres of county land...total serenity! Tucked away among towering hardwoods and a peaceful landscape is this beautiful quality built ¼ log home featuring 3 bedrooms, 3 baths, a gorgeous real-stone wood burning fireplace, a large kitchen with custom cabinetry-large breakfast bar, a main floor primary suite with sauna-walk in closet, a warm and welcoming knotty pine interior with log beamed ceilings, large windows showcasing the stunning landscape and private pond views, a huge wrap-around deck for entertaining, an office with built-in bookcases, a 4th sleeping area for guest when needed, main level laundry, an upper level family room with additional bedrooms and full bath, an unfinished lower level waiting for your personal touch and it comes furnished. Whether you're a nature lover, hunter, or simply someone who loves peace and quiet...this property delivers! Enjoy a long, windy drive through the woods, scenic trails and an abundance of wildlife with all the conveniences of being just minutes from Nisswa. THIS IS A RARE OPPORTUNITY...LOCATION...LOCATION...LOCATION.

Additional Details:

Year Built	2013
Lot Acres	80.15
Lot Dimensions	Irregular - 1 mile of creek frontage and a pond
Garage Stalls	2
School District	116
Taxes	\$5,176
Taxes with Assessments	\$5,176
Tax Year	2025

Additional Features:

Fuel: Propane **Heat:** Forced Air

Driving Directions:

FROM HOLIDAY STOPLIGHTS, NISSWA AT THE JCT. OF 77 & 371, GO WEST ON 77 FOR 3.0 MILES TO, RIGHT AT BAR HARBOR ON 78 FOR 1.1 MILES TO, LEFT ON 107 THAT "BECOMES 21ST AVE SW" FOR A TOTAL OF 3.4 MILES TO SIGN &



Listed By:
Kurilla Real Estate LTD

Affinity Real Estate Inc. participates in the Regional Multiple Listing Service of Minnesota, Inc Broker Reciprocity (sm) program, allowing us to display other broker's listings on our website. All properties are subject to prior sale, change or withdrawal.



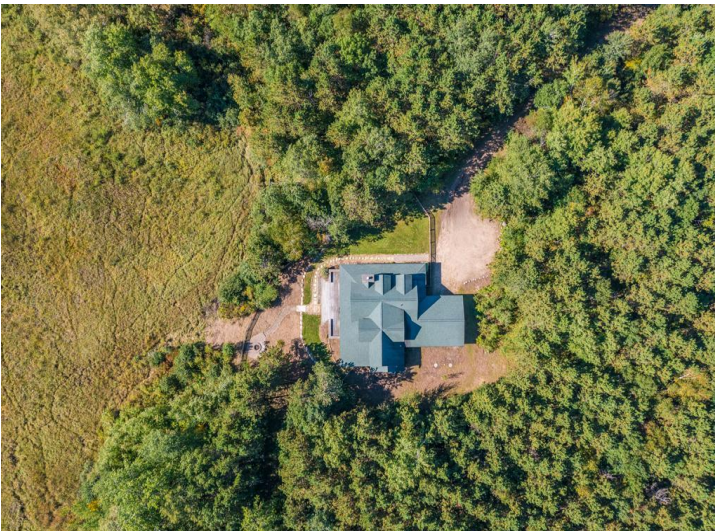
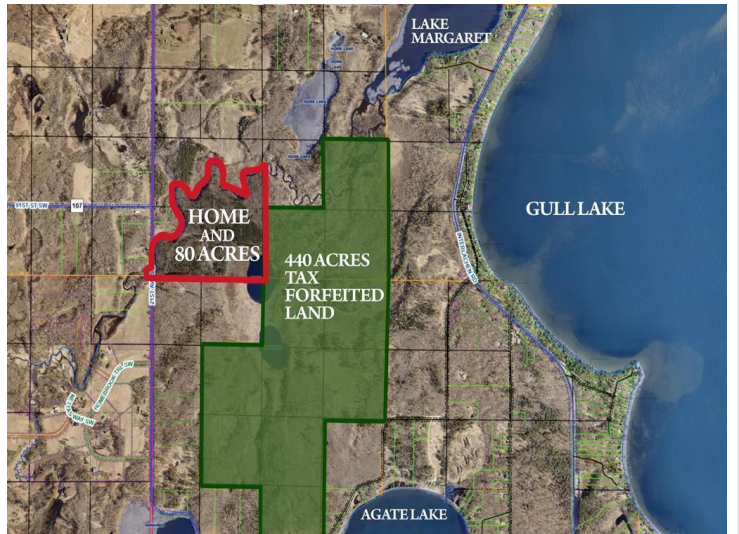
Call Affinity Real Estate

218-237-3333

info@affinityrealestate.com



Affinity Real Estate - 600 Park Avenue South - Park Rapids MN 56470



website: www.AffinityRealEstate.com | email: info@affinityrealestate.com | office: 218-237-3333 | fax: 218-237-3377



\$795,000
 MLS 6790352 Residential
 9222 21st Avenue
 Nisswa MN 56468



website: www.AffinityRealEstate.com | email: info@affinityrealestate.com | office: 218-237-3333 | fax: 218-237-3377

Affinity
REAL ESTATE INC

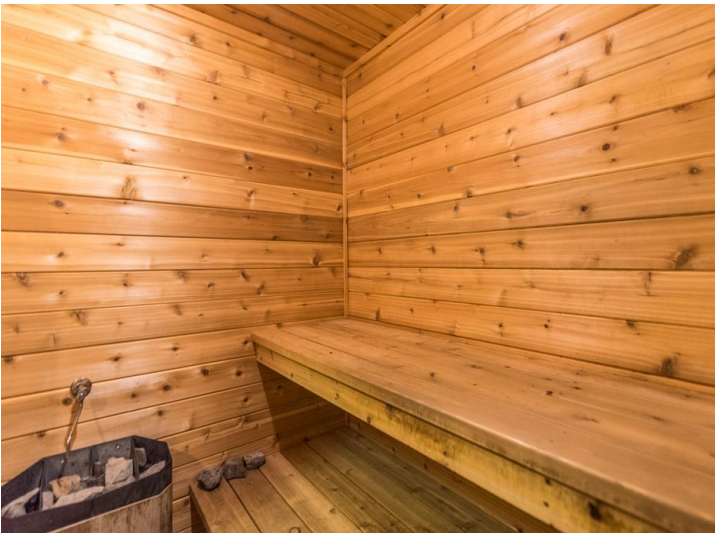
\$795,000
MLS 6790352 Residential
9222 21st Avenue
Nisswa MN 56468



website: www.AffinityRealEstate.com | email: info@affinityrealestate.com | office: 218-237-3333 | fax: 218-237-3377



\$795,000
 MLS 6790352 Residential
 9222 21st Avenue
 Nisswa MN 56468



website: www.AffinityRealEstate.com | email: info@affinityrealestate.com | office: 218-237-3333 | fax: 218-237-3377

Affinity
REAL ESTATE INC

\$795,000
MLS 6790352 Residential
9222 21st Avenue
Nisswa MN 56468



website: www.AffinityRealEstate.com | email: info@affinityrealestate.com | office: 218-237-3333 | fax: 218-237-3377



\$795,000
 MLS 6790352 Residential
 9222 21st Avenue
 Nisswa MN 56468



website: www.AffinityRealEstate.com | email: info@affinityrealestate.com | office: 218-237-3333 | fax: 218-237-3377



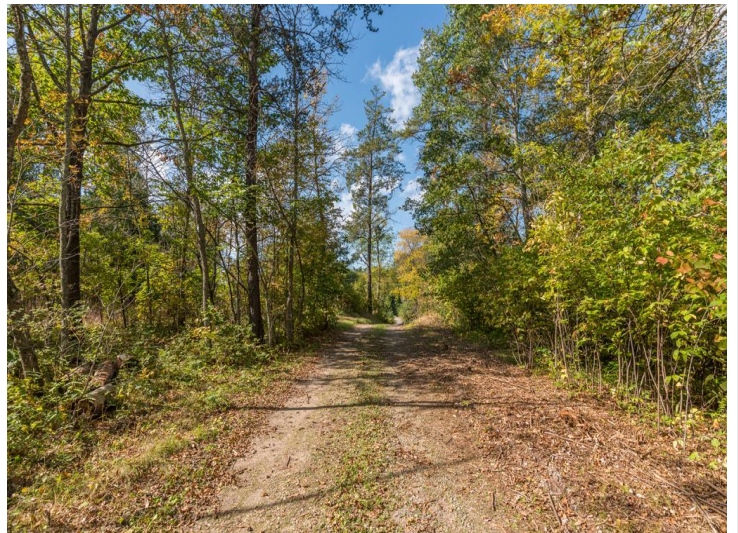
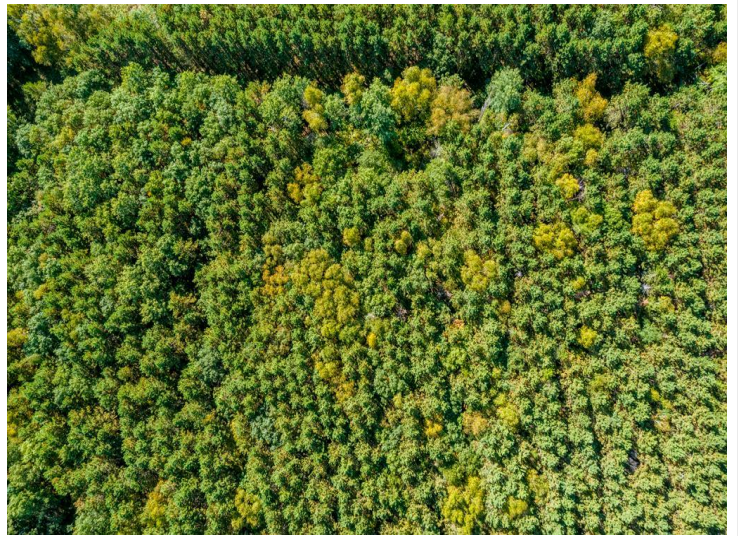
\$795,000
 MLS 6790352 Residential
 9222 21st Avenue
 Nisswa MN 56468



website: www.AffinityRealEstate.com | email: info@affinityrealestate.com | office: 218-237-3333 | fax: 218-237-3377



\$795,000
 MLS 6790352 Residential
 9222 21st Avenue
 Nisswa MN 56468



website: www.AffinityRealEstate.com | email: info@affinityrealestate.com | office: 218-237-3333 | fax: 218-237-3377



\$795,000
MLS 6790352 Residential
9222 21st Avenue
Nisswa MN 56468



website: www.AffinityRealEstate.com | email: info@affinityrealestate.com | office: 218-237-3333 | fax:218-237-3377



\$795,000
MLS 6790352 Residential
9222 21st Avenue
Nisswa MN 56468