

MLS 6790478 Lake Home

**\$299,900**

786 sq ft  
2 bedrooms  
1 baths

37061 Delta Bay Drive  
Pine River MN 56474

Waterfront: Whitefish Lake  
(18031000)

Status: Active

#### Description:

Here's your opportunity to own 51 feet of frontage on Delta Bay, part of the highly sought-after Whitefish Chain of Lakes! Situated on 1.55 acres, this unique property offers a peaceful setting with plenty of space and flexibility. Enjoy the current setup which includes a mobile home with a spacious wraparound deck, large three-season porch, and a bunkhouse/shed. Whether you're looking for a summer getaway or a future building site, this property has it all. With two building envelopes, there's room to build your dream lake home and even add an extra garage or storage for all your lake toys. A permanent dock is already in place, giving you easy access to one of the most popular and scenic chains of lakes in northern Minnesota. This property is being sold as-is. Use it now and plan for the future! Driveway access is via a recorded easement—please refer to the certified survey in the supplements for full details. Don't miss this chance to get on the Whitefish Chain at an affordable price!

#### Additional Details:

|                        |               |
|------------------------|---------------|
| Year Built             | 1969          |
| Lot Acres              | 1.55          |
| Lot Dimensions         | 51x125xIRREG. |
| School District        | 2174          |
| Taxes                  | \$859         |
| Taxes with Assessments | \$859         |
| Tax Year               | 2025          |

#### Additional Features:

**Fuel:** Propane **Heat:** Forced Air

#### Driving Directions:

From Jenkins take County Rd 15 to Right on Wildamere Drive to Right on Heath Drive stay to the right to Delta Bay Rd. to Fire Number 37061 and Signs. Please note the grass driveway ( See Certified Survey) run parallel to the neighbor's blacktop driveway.



Listed By:  
Kurilla Real Estate LTD

Affinity Real Estate Inc. participates in the Regional Multiple Listing Service of Minnesota, Inc Broker Reciprocity (sm) program, allowing us to display other broker's listings on our website. All properties are subject to prior sale, change or withdrawal.



**Call Affinity Real Estate**

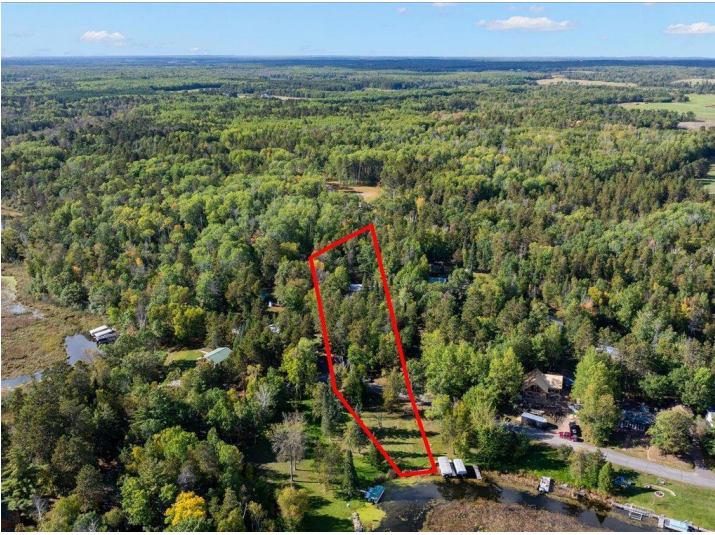
**218-237-3333**

**info@affinityrealestate.com**



**Affinity Real Estate - 600 Park Avenue South - Park Rapids MN 56470**





website: [www.AffinityRealEstate.com](http://www.AffinityRealEstate.com) | email: [info@affinityrealestate.com](mailto:info@affinityrealestate.com) | office: 218-237-3333 | fax: 218-237-3377



**\$299,900**  
 MLS 6790478 Lake Home  
 37061 Delta Bay Drive  
 Pine River MN 56474





website: [www.AffinityRealEstate.com](http://www.AffinityRealEstate.com) | email: [info@affinityrealestate.com](mailto:info@affinityrealestate.com) | office: 218-237-3333 | fax: 218-237-3377



**\$299,900**  
 MLS 6790478 Lake Home  
 37061 Delta Bay Drive  
 Pine River MN 56474





website: [www.AffinityRealEstate.com](http://www.AffinityRealEstate.com) | email: [info@affinityrealestate.com](mailto:info@affinityrealestate.com) | office: 218-237-3333 | fax: 218-237-3377



**\$299,900**  
 MLS 6790478 Lake Home  
 37061 Delta Bay Drive  
 Pine River MN 56474