



MLS 6790790 Land

\$159,000

19.91 Acres

Other

TBD 56th Street
Staples MN 56479

Status: Active

Description:

Motivated seller! Escape to the country with this beautiful and versatile 20-acre property north of Motley. Featuring a level mix of woods, pasture/tillable land, and a small marsh area, this property offers the perfect setting for a variety of uses — whether you're looking to build, farm, or simply enjoy the outdoors. The land is fully fenced and includes electricity, a drilled well, a 40x23 garage converted to two horse stalls, and a spacious 46x48 Quonset building—ideal for storage, animals, or equipment. (Tax info from county figured on the full 39.81 Acres). ****The seller speaks of an abundance of deer & wild turkeys, if hunting is a passion!**

Endless potential awaits: Build your dream home or a cozy hunting shack, Bring your RV for weekend getaways, Start a hobby farm with livestock or crops, Create food plots and enjoy excellent hunting opportunities, Set up basecamp for recreation with nearby tax-forfeited public land access.

***Bonus-** no chemicals have been used on the pasture/tillable land! AND Fiber Optic available!

Enjoy the peace of the countryside with easy, year-round access from Hwy 64. Whether you're seeking a rural retreat, recreational paradise, or place to plant your roots, this property is ready for your vision.

Additional Details:

Lot Acres	19.91
Lot Dimensions	672x1290
School District	2170
Taxes	\$1,298
Taxes with Assessments	\$1,364
Tax Year	2025

Additional Features:

Driving Directions:

From Hwy 64 north of Motley, turn West onto 56th St SW for .6 mile to property on the Left.



Listed By:
Weichert REALTORS Tower Properties

Affinity Real Estate Inc. participates in the Regional Multiple Listing Service of Minnesota, Inc Broker Reciprocity (sm) program, allowing us to display other broker's listings on our website. All properties are subject to prior sale, change or withdrawal.



Call Affinity Real Estate

218-237-3333

info@affinityrealestate.com



Affinity Real Estate - 600 Park Avenue South - Park Rapids MN 56470



website: www.AffinityRealEstate.com | email: info@affinityrealestate.com | office: 218-237-3333 | fax: 218-237-3377

Affinity
REAL ESTATE INC

\$159,000
MLS 6790790 Land
TBD 56th Street
Staples MN 56479



website: www.AffinityRealEstate.com | email: info@affinityrealestate.com | office: 218-237-3333 | fax: 218-237-3377



\$159,000
MLS 6790790 Land
TBD 56th Street
Staples MN 56479



website: www.AffinityRealEstate.com | email: info@affinityrealestate.com | office: 218-237-3333 | fax: 218-237-3377



\$159,000
MLS 6790790 Land
TBD 56th Street
Staples MN 56479



website: www.AffinityRealEstate.com | email: info@affinityrealestate.com | office: 218-237-3333 | fax: 218-237-3377



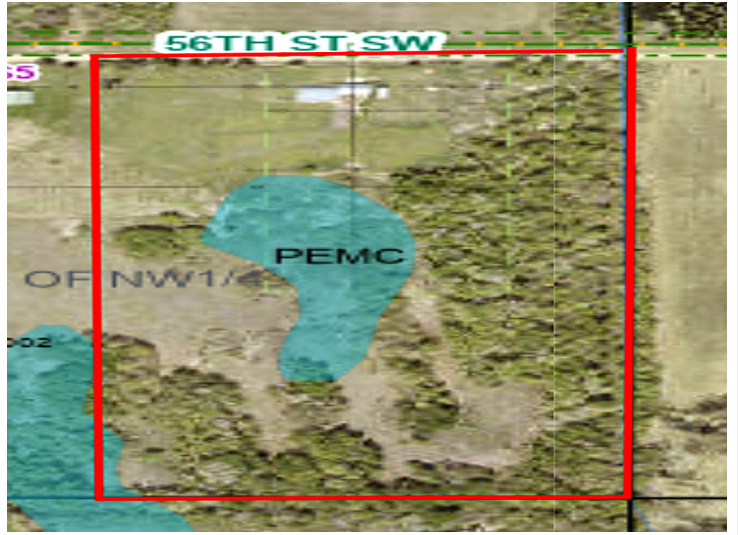
\$159,000
MLS 6790790 Land
TBD 56th Street
Staples MN 56479



website: www.AffinityRealEstate.com | email: info@affinityrealestate.com | office: 218-237-3333 | fax: 218-237-3377



\$159,000
 MLS 6790790 Land
 TBD 56th Street
 Staples MN 56479



website: www.AffinityRealEstate.com | email: info@affinityrealestate.com | office: 218-237-3333 | fax: 218-237-3377



\$159,000
MLS 6790790 Land
TBD 56th Street
Staples MN 56479