



MLS 6791000 Land

**\$175,000**

21.38 Acres  
Raw Land

19341 Hunter Drive  
Brainerd MN 56401

Status: Active

**Description:**

Discover your own outdoor paradise on this 21-acre hunting retreat. Heavily wooded with mature oaks, maples, and pines, this property offers the perfect habitat for an abundance of wildlife including deer, bear, and turkeys. Two active food plots and a network of cut trails make accessing the land and ideal hunting locations a breeze. Permanent deer stands are already in place, giving you the advantage for this fall's season. A 40' x 58' Quonset building provides excellent storage for equipment and gear, complete with a 100-amp electrical panel for power needs. Whether you're looking for a private hunting getaway or a base camp for outdoor adventures, this property is ready for you to enjoy.

**Additional Details:**

Lot Acres	21.38
Lot Dimensions	657x1411x656x1430
School District	181
Taxes	\$799
Taxes with Assessments	\$824
Tax Year	2025

**Additional Features:**

**Driving Directions:**

From Brainerd- South on State Hwy 25 approx 12 miles to Left on CR 2 approx 6 miles to Right on Meadowview Rd 1 mile to Right on Hunter Dr .7 miles to property on Left.



Listed By:  
Positive Realty

Affinity Real Estate Inc. participates in the Regional Multiple Listing Service of Minnesota, Inc Broker Reciprocity (sm) program, allowing us to display other broker's listings on our website. All properties are subject to prior sale, change or withdrawal.



**Call Affinity Real Estate**

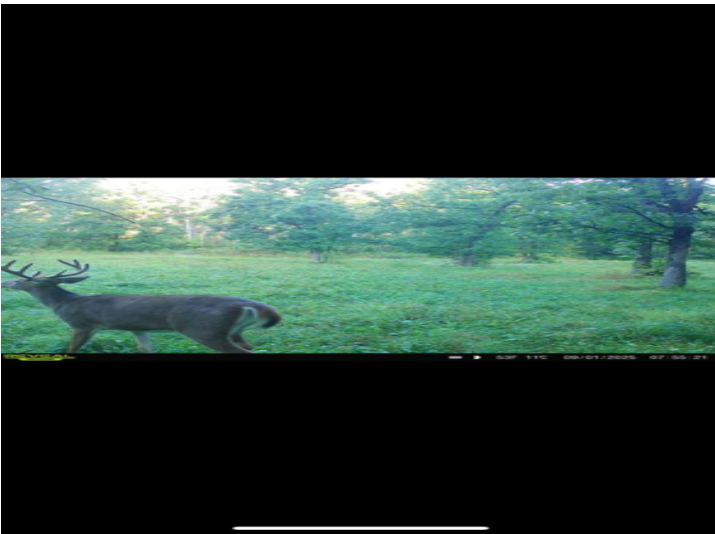
**218-237-3333**

**info@affinityrealestate.com**



**Affinity Real Estate - 600 Park Avenue South - Park Rapids MN 56470**





website: [www.AffinityRealEstate.com](http://www.AffinityRealEstate.com) | email: [info@affinityrealestate.com](mailto:info@affinityrealestate.com) | office: 218-237-3333 | fax: 218-237-3377



**\$175,000**  
 MLS 6791000 Land  
 19341 Hunter Drive  
 Brainerd MN 56401



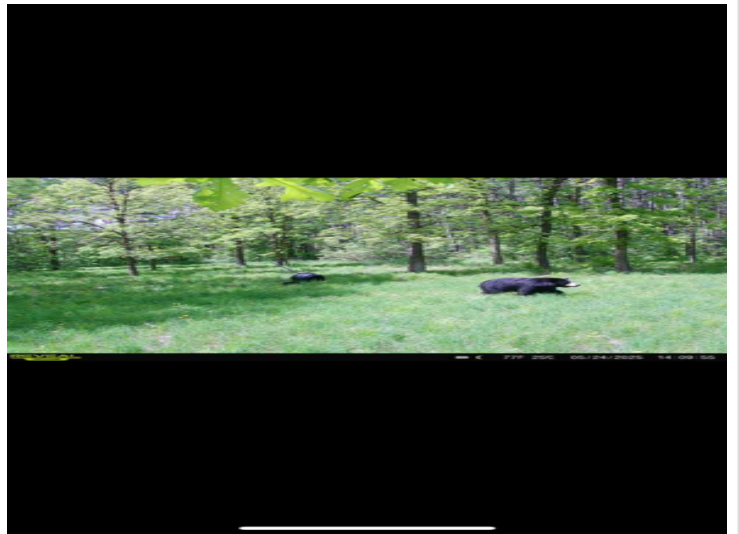


website: [www.AffinityRealEstate.com](http://www.AffinityRealEstate.com) | email: [info@affinityrealestate.com](mailto:info@affinityrealestate.com) | office: 218-237-3333 | fax: 218-237-3377



**\$175,000**  
 MLS 6791000 Land  
 19341 Hunter Drive  
 Brainerd MN 56401





website: [www.AffinityRealEstate.com](http://www.AffinityRealEstate.com) | email: [info@affinityrealestate.com](mailto:info@affinityrealestate.com) | office: 218-237-3333 | fax: 218-237-3377



**\$175,000**  
 MLS 6791000 Land  
 19341 Hunter Drive  
 Brainerd MN 56401



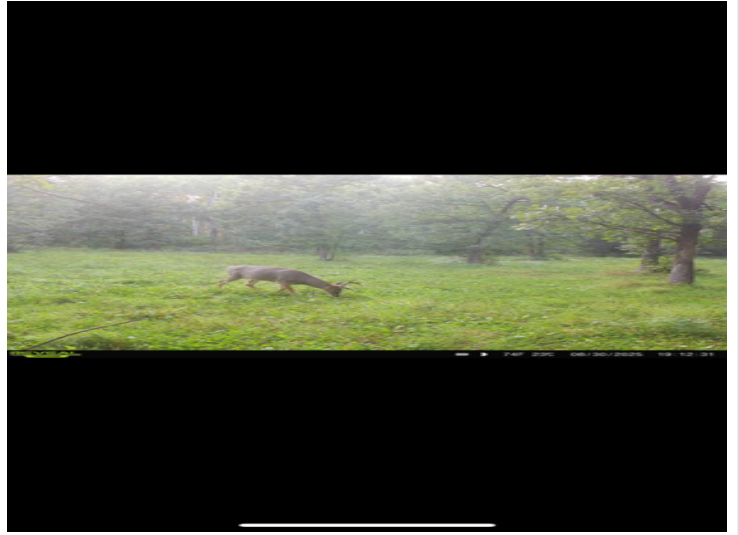


website: [www.AffinityRealEstate.com](http://www.AffinityRealEstate.com) | email: [info@affinityrealestate.com](mailto:info@affinityrealestate.com) | office: 218-237-3333 | fax: 218-237-3377



**\$175,000**  
 MLS 6791000 Land  
 19341 Hunter Drive  
 Brainerd MN 56401





website: [www.AffinityRealEstate.com](http://www.AffinityRealEstate.com) | email: [info@affinityrealestate.com](mailto:info@affinityrealestate.com) | office: 218-237-3333 | fax:218-237-3377



**\$175,000**  
MLS 6791000 Land  
19341 Hunter Drive  
Brainerd MN 56401