



MLS 6791118 Commercial

\$1,200,000

615 Washington Street
Brainerd MN 56401

Status: Active

Description:

Exceptional opportunity to secure a premier commercial building along Brainerd's busy Washington Street corridor. Previously operating as a tire service center, this highly visible property is ideally suited for automotive, service, or related businesses seeking maximum exposure and functionality. The building features an expansive warehouse/service space with four drive-through service bays with eight overhead doors for seamless workflow, a spacious front reception and sales area, plus a breakroom and three restrooms to support staff and operations. While tailored for automotive use, the versatile layout also lends itself well to a wide range of commercial applications, making this an ideal location to position your business for success in the heart of Brainerd.

Additional Details:

Year Built	2015
Lot Acres	0.45
Lot Dimensions	150x130
Garage Stalls	8
School District	181
Taxes	\$26,840
Taxes with Assessments	\$26,840
Tax Year	2025

Additional Features:

Fuel: Natural Gas **Heat:** Forced Air, Space Heater

Driving Directions:

From Hwy 210 (Washington Street) / Hwy 371 (S 6th Street) intersection in Brainerd - East on Washington Street 1 block - Property is the NW corner of Washington Street and N 7th Street



Listed By:
Close-Converse Commercial Prop

Affinity Real Estate Inc. participates in the Regional Multiple Listing Service of Minnesota, Inc Broker Reciprocity (sm) program, allowing us to display other broker's listings on our website. All properties are subject to prior sale, change or withdrawal.



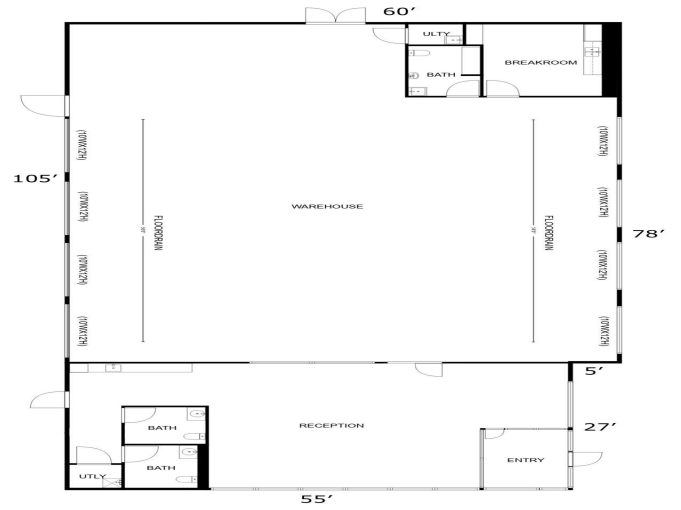
Call Affinity Real Estate

218-237-3333

info@affinityrealestate.com



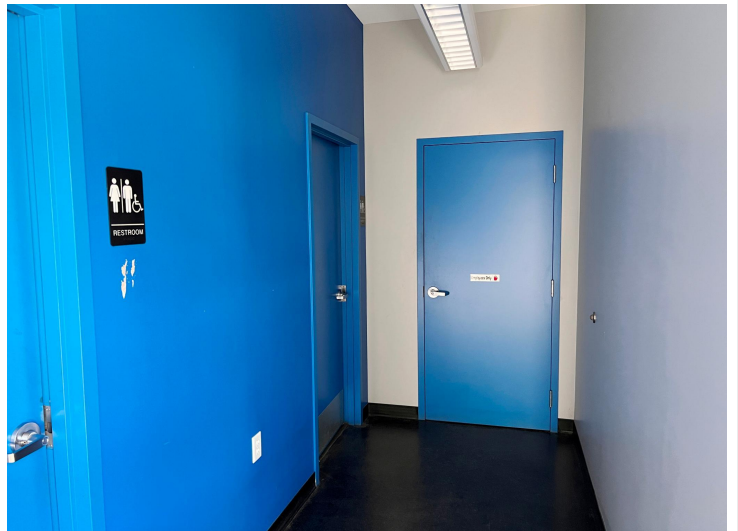
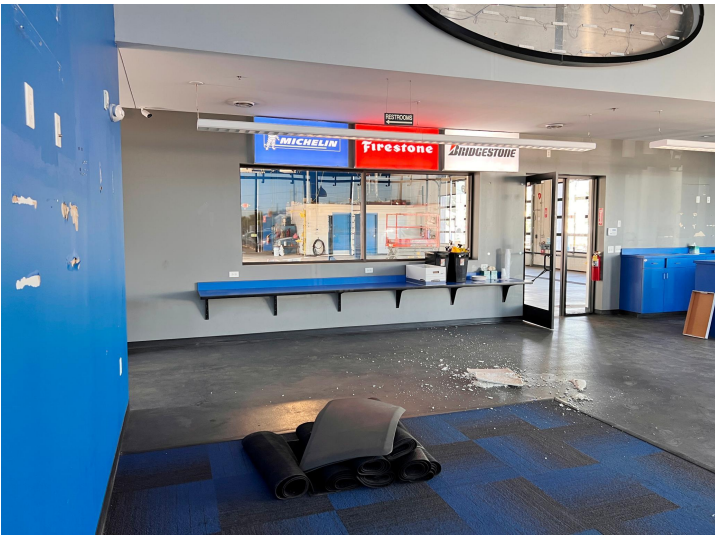
Affinity Real Estate - 600 Park Avenue South - Park Rapids MN 56470



website: www.AffinityRealEstate.com | email: info@affinityrealestate.com | office: 218-237-3333 | fax: 218-237-3377

Affinity
REAL ESTATE INC

\$1,200,000
MLS 6791118 Commercial
615 Washington Street
Brainerd MN 56401



website: www.AffinityRealEstate.com | email: info@affinityrealestate.com | office: 218-237-3333 | fax: 218-237-3377



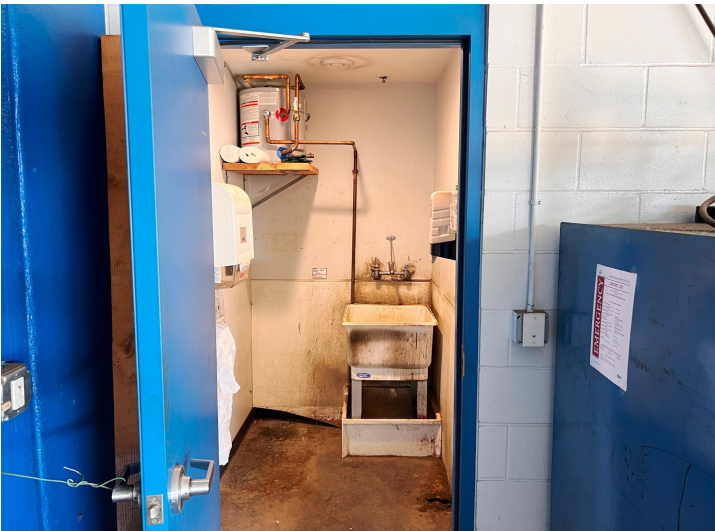
\$1,200,000
MLS 6791118 Commercial
615 Washington Street
Brainerd MN 56401



website: www.AffinityRealEstate.com | email: info@affinityrealestate.com | office: 218-237-3333 | fax: 218-237-3377



\$1,200,000
 MLS 6791118 Commercial
 615 Washington Street
 Brainerd MN 56401



website: www.AffinityRealEstate.com | email: info@affinityrealestate.com | office: 218-237-3333 | fax: 218-237-3377



\$1,200,000
 MLS 6791118 Commercial
 615 Washington Street
 Brainerd MN 56401