



MLS 6791403 Residential

**\$199,900**

1,092 sq ft  
3 bedrooms  
1 baths

430 D Street  
Brainerd MN 56401

Status: Active

**Description:**

Charming Corner-Lot Home with Major Updates!

Welcome to 430 D Street, a well-maintained home in the heart of Brainerd offering comfort, functionality, and peace of mind with recent upgrades. Situated on a desirable corner lot, this property features a spacious 3-car garage with a brand-new roof (2024), while the main home received a new roof in 2020.

Inside, you'll find a reliable boiler system installed in 2022, ensuring efficient heating through Minnesota's winters. Most of the windows have been updated to vinyl frames, enhancing both energy efficiency and curb appeal. The kitchen is equipped with brand-new stainless steel appliances, making it move-in ready for cooking and entertaining.

This property combines convenience and practicality with plenty of garage space, modern updates, and a central Brainerd location. A great opportunity for buyers seeking a home that's already been thoughtfully upgraded!

**Additional Details:**

Year Built	1888
Lot Acres	0.13
Lot Dimensions	42x140
Garage Stalls	3
School District	181
Taxes	\$2,246
Taxes with Assessments	\$2,246
Tax Year	2024

**Additional Features:**

**Basement:** Partial **Fuel:** Natural Gas **Garage:** 3 **Heat:** Boiler **Sewer:** City Sewer/Connected **Water:** City Water/Connected **Air Conditioning:** None

**Driving Directions:**

From Brainerd East on State Hwy 210 to North on 5th Ave Ne to corner of 5th Ave Ne and D Street



Listed By:  
PMI Minnesota

Affinity Real Estate Inc. participates in the Regional Multiple Listing Service of Minnesota, Inc Broker Reciprocity (sm) program, allowing us to display other broker's listings on our website. All properties are subject to prior sale, change or withdrawal.



**Call Affinity Real Estate**

**218-237-3333**

**info@affinityrealestate.com**



**Affinity Real Estate - 600 Park Avenue South - Park Rapids MN 56470**



website: [www.AffinityRealEstate.com](http://www.AffinityRealEstate.com) | email: [info@affinityrealestate.com](mailto:info@affinityrealestate.com) | office: 218-237-3333 | fax: 218-237-3377

**Affinity**  
REAL ESTATE INC

**\$199,900**  
MLS 6791403 Residential  
430 D Street  
Brainerd MN 56401

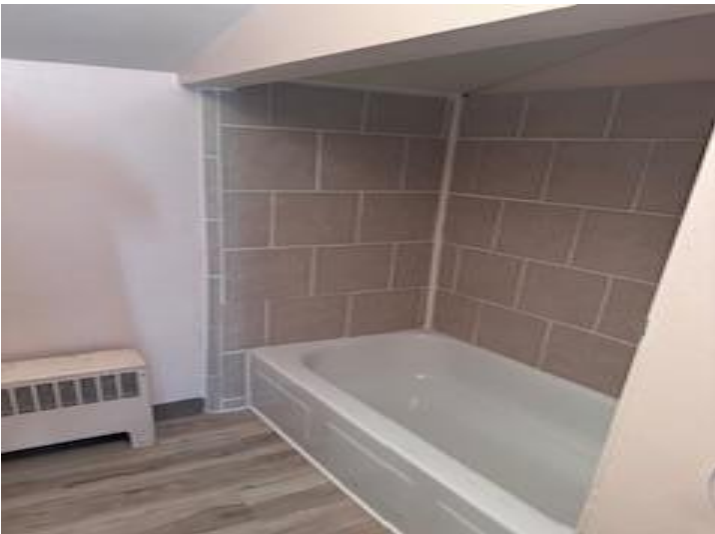




website: [www.AffinityRealEstate.com](http://www.AffinityRealEstate.com) | email: [info@affinityrealestate.com](mailto:info@affinityrealestate.com) | office: 218-237-3333 | fax: 218-237-3377



**\$199,900**  
MLS 6791403 Residential  
430 D Street  
Brainerd MN 56401



website: [www.AffinityRealEstate.com](http://www.AffinityRealEstate.com) | email: [info@affinityrealestate.com](mailto:info@affinityrealestate.com) | office: 218-237-3333 | fax: 218-237-3377



**\$199,900**  
MLS 6791403 Residential  
430 D Street  
Brainerd MN 56401