



MLS 6792524 Residential

\$865,000

4,316 sq ft
5 bedrooms
5 baths

30180 Tower Road
Detroit Lakes MN 56501

Status: Active

Description:

Nestled in the Pines, this property offers the perfect combination of privacy, space, and convenience to some of the area's best amenities. Directly across the street you'll find Mountain View Recreation Area with Hiking, Bike & Equestrian trail and just down the road is Detroit Mountain, a year-round destination for skiing, biking with its acclaimed IMBA bike trails and live music events. The developing Orenstone Gardens & Sculpture Park is also nearby, adding another unique attraction to enjoy With 3 TROLLS only a short walk away. Big Detroit Lake is only 2 miles away, and downtown Detroit Lakes is just 4 miles, giving you quick access to lakes, shops, dining, and community events. The home itself had a refresh with all new flooring, Custom Bathrooms with All Tile Custom Showers with Glass Doors, and updated Lighting. Designed to provide comfort while still embracing its wooded setting. Listen to the pines whisper on the Huge maintenance free Deck. In addition, the property features a 32x40 shop with in-floor heat and Car Hoist so it is ideal for hobbies, storage, or projects of any kind. This property truly captures the best of both worlds—peaceful, private living surrounded by nature with the convenience of recreation and city amenities only minutes away. Owner/Agent

Additional Details:

Year Built	2007
Lot Acres	2.5
Lot Dimensions	1
Garage Stalls	5
School District	1074
Taxes	\$4,544
Taxes with Assessments	\$4,544
Tax Year	2025

Additional Features:

Fuel: Array **Heat:** Forced Air

Driving Directions:

Take HWY 10 West of DL for 1 mile to stop light by the Lodge then turn Left onto Cnty RD 54 for 1/4 mile then left on Tower Rd follow 1.5 miles to property on your left side.



Listed By:
HomeSmart Adventure Realty (DL)

Affinity Real Estate Inc. participates in the Regional Multiple Listing Service of Minnesota, Inc Broker Reciprocity (sm) program, allowing us to display other broker's listings on our website. All properties are subject to prior sale, change or withdrawal.



Call Affinity Real Estate

218-237-3333

info@affinityrealestate.com



Affinity Real Estate - 600 Park Avenue South - Park Rapids MN 56470



website: www.AffinityRealEstate.com | email: info@affinityrealestate.com | office: 218-237-3333 | fax: 218-237-3377

Affinity
REAL ESTATE INC

\$865,000
MLS 6792524 Residential
30180 Tower Road
Detroit Lakes MN 56501



website: www.AffinityRealEstate.com | email: info@affinityrealestate.com | office: 218-237-3333 | fax: 218-237-3377



\$865,000
MLS 6792524 Residential
30180 Tower Road
Detroit Lakes MN 56501



website: www.AffinityRealEstate.com | email: info@affinityrealestate.com | office: 218-237-3333 | fax: 218-237-3377

Affinity
REAL ESTATE INC

\$865,000
MLS 6792524 Residential
30180 Tower Road
Detroit Lakes MN 56501



website: www.AffinityRealEstate.com | email: info@affinityrealestate.com | office: 218-237-3333 | fax: 218-237-3377

Affinity
REAL ESTATE INC

\$865,000
MLS 6792524 Residential
30180 Tower Road
Detroit Lakes MN 56501



website: www.AffinityRealEstate.com | email: info@affinityrealestate.com | office: 218-237-3333 | fax: 218-237-3377



\$865,000
 MLS 6792524 Residential
 30180 Tower Road
 Detroit Lakes MN 56501



website: www.AffinityRealEstate.com | email: info@affinityrealestate.com | office: 218-237-3333 | fax: 218-237-3377



\$865,000
 MLS 6792524 Residential
 30180 Tower Road
 Detroit Lakes MN 56501



website: www.AffinityRealEstate.com | email: info@affinityrealestate.com | office: 218-237-3333 | fax: 218-237-3377

Affinity
REAL ESTATE INC

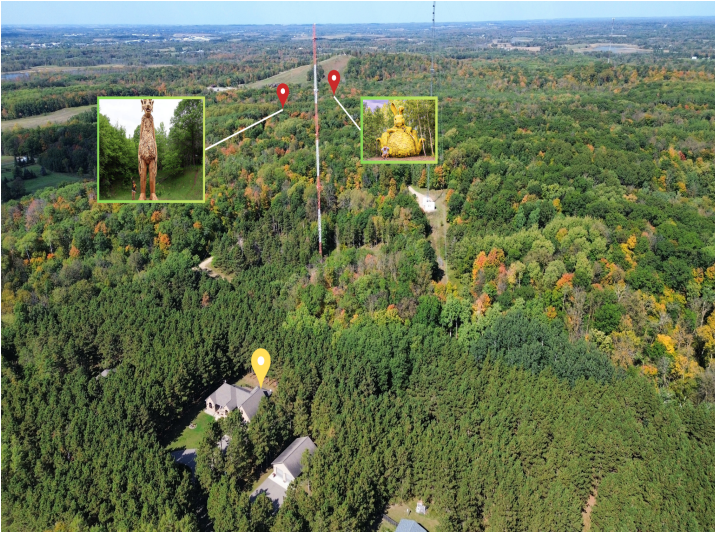
\$865,000
MLS 6792524 Residential
30180 Tower Road
Detroit Lakes MN 56501



website: www.AffinityRealEstate.com | email: info@affinityrealestate.com | office: 218-237-3333 | fax: 218-237-3377



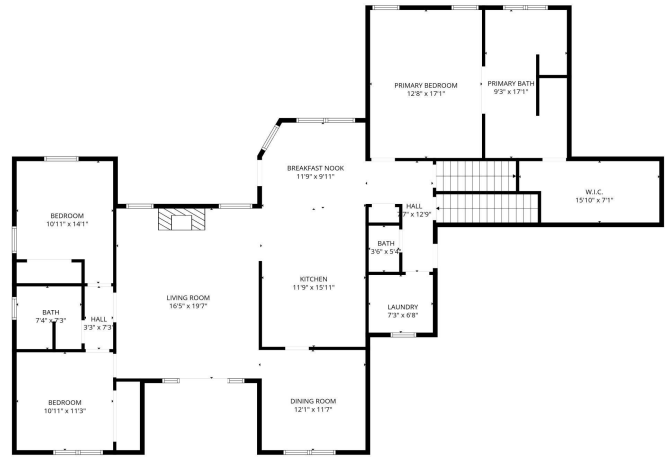
\$865,000
 MLS 6792524 Residential
 30180 Tower Road
 Detroit Lakes MN 56501



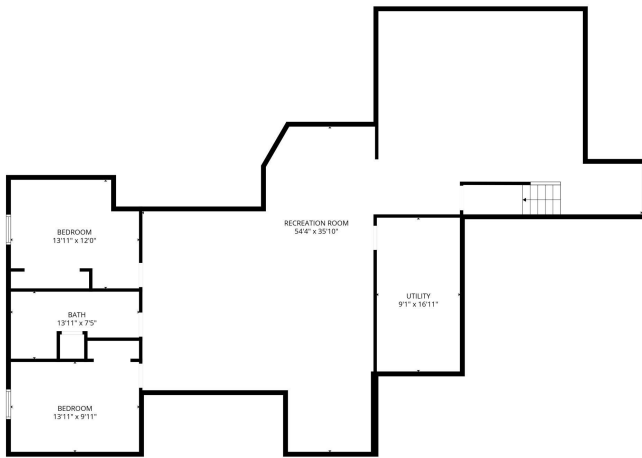
website: www.AffinityRealEstate.com | email: info@affinityrealestate.com | office: 218-237-3333 | fax: 218-237-3377

Affinity
REAL ESTATE INC

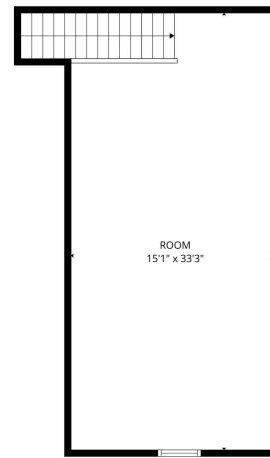
\$865,000
MLS 6792524 Residential
30180 Tower Road
Detroit Lakes MN 56501



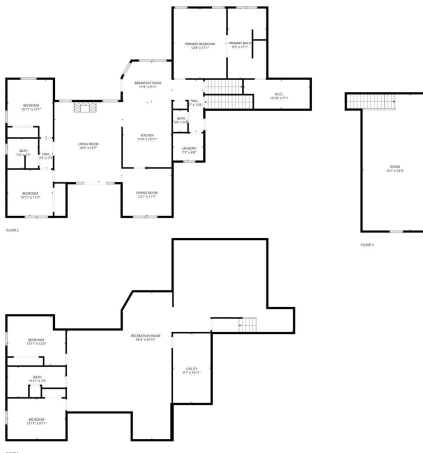
FLOOR PLAN CREATED BY CURICASA APP. MEASUREMENTS DEEMED HIGHLY RELIABLE BUT NOT GUARANTEED.



FLOOR PLAN CREATED BY CURICASA APP. MEASUREMENTS DEEMED HIGHLY RELIABLE BUT NOT GUARANTEED.



FLOOR PLAN CREATED BY CURICASA APP. MEASUREMENTS DEEMED HIGHLY RELIABLE BUT NOT GUARANTEED.



FLOOR PLAN CREATED BY CURICASA APP. MEASUREMENTS DEEMED HIGHLY RELIABLE BUT NOT GUARANTEED.



website: www.AffinityRealEstate.com | email: info@affinityrealestate.com | office: 218-237-3333 | fax: 218-237-3377

Affinity
REAL ESTATE INC

\$865,000
MLS 6792524 Residential
30180 Tower Road
Detroit Lakes MN 56501



website: www.AffinityRealEstate.com | email: info@affinityrealestate.com | office: 218-237-3333 | fax:218-237-3377



\$865,000
MLS 6792524 Residential
30180 Tower Road
Detroit Lakes MN 56501