



MLS 6792600 Land

\$19,900

1.17 Acres

Raw Land

29606 Bass Lake Road
Cohasset MN 55744

Status: Active

Description:

This 1.2-acre parcel offers the perfect balance of rural living close-to-town convenience. Tucked just outside of town, the property is partially cleared with a roughed-in driveway already in place, giving you a head start on building your new home or cabin. Contractors have confirmed there's room on the lot to install a well and septic system, making the site ready for your vision. It also borders county land. Enjoy the flexibility with room to spread out while still being close to everyday amenities. Whether you're looking for a private getaway or a place to put down roots, this property provides a strong foundation for your future build.

Additional Details:

Lot Acres	1.17
Lot Dimensions	200x256
School District	318
Taxes	\$68
Taxes with Assessments	\$68
Tax Year	2024

Additional Features:

Driving Directions:

From US Hwy 2, Turn North onto East Bass Lake Road. The property will be on the right.



Listed By:
GRAND PROPERTIES REAL ESTATE

Affinity Real Estate Inc. participates in the Regional Multiple Listing Service of Minnesota, Inc Broker Reciprocity (sm) program, allowing us to display other broker's listings on our website. All properties are subject to prior sale, change or withdrawal.



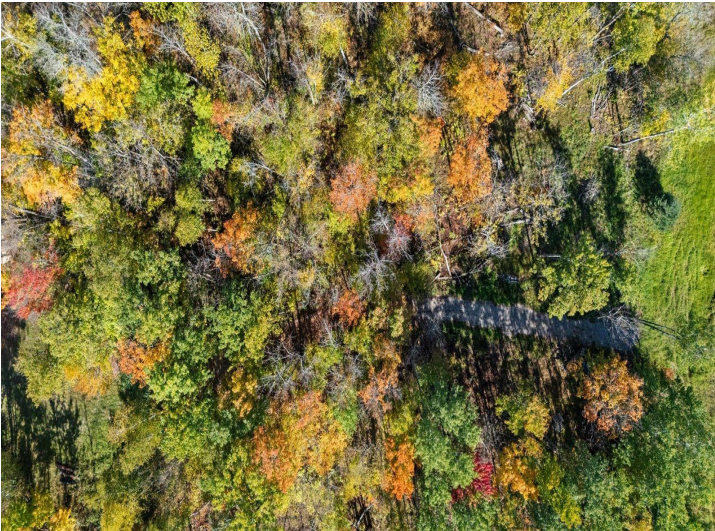
Call Affinity Real Estate

218-237-3333

info@affinityrealestate.com



Affinity Real Estate - 600 Park Avenue South - Park Rapids MN 56470



website: www.AffinityRealEstate.com | email: info@affinityrealestate.com | office: 218-237-3333 | fax: 218-237-3377



\$19,900
 MLS 6792600 Land
 29606 Bass Lake Road
 Cohasset MN 55744



website: www.AffinityRealEstate.com | email: info@affinityrealestate.com | office: 218-237-3333 | fax: 218-237-3377



\$19,900
MLS 6792600 Land
29606 Bass Lake Road
Cohasset MN 55744