



MLS 6792822 Land

\$174,900

3 Acres
Raw Land

TBD 405th Ave
Richville MN 56576

Status: Hold

Description:

Check out this 3-acre Long Lake lot with 300 feet of shoreline in Otter Tail County. Build your dream home, bring in the camper, build a shed--the possibilities are endless with this property. This level lot is located at the end of a cul-de-sac just a half mile off Long Lake Road and just a few miles from Otter Tail Lake and the many amenities that the area has to offer. Don't wait on this one!

Additional Details:

Lot Acres	3
Lot Dimensions	Irregular
School District	1955
Taxes	\$1,130
Taxes with Assessments	\$1,130
Tax Year	2025

Additional Features:

Driving Directions:

Take Long lake road to 405th Ave going South--head about a half mile to the dead end/cul-de-sac.



Listed By:
Hinkle Realty

Affinity Real Estate Inc. participates in the Regional Multiple Listing Service of Minnesota, Inc Broker Reciprocity (sm) program, allowing us to display other broker's listings on our website. All properties are subject to prior sale, change or withdrawal.



Call Affinity Real Estate

218-237-3333

info@affinityrealestate.com



Affinity Real Estate - 600 Park Avenue South - Park Rapids MN 56470



website: www.AffinityRealEstate.com | email: info@affinityrealestate.com | office: 218-237-3333 | fax: 218-237-3377



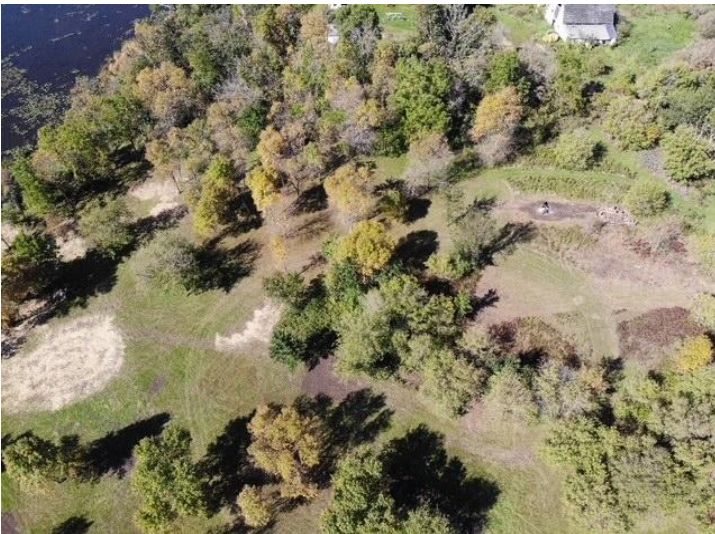
\$174,900
 MLS 6792822 Land
 TBD 405th Ave
 Richville MN 56576



website: www.AffinityRealEstate.com | email: info@affinityrealestate.com | office: 218-237-3333 | fax: 218-237-3377



\$174,900
 MLS 6792822 Land
 TBD 405th Ave
 Richville MN 56576



website: www.AffinityRealEstate.com | email: info@affinityrealestate.com | office: 218-237-3333 | fax: 218-237-3377



\$174,900
 MLS 6792822 Land
 TBD 405th Ave
 Richville MN 56576



website: www.AffinityRealEstate.com | email: info@affinityrealestate.com | office: 218-237-3333 | fax: 218-237-3377



\$174,900
MLS 6792822 Land
TBD 405th Ave
Richville MN 56576