



MLS 6793500 Land

**\$274,900**

80 Acres  
Raw Land

TBD 150th Street  
Verndale MN 56481

Status: Pending

**Description:**

80-Acre Mixed Use Property – Prime Location for Hunting, Farming, and Recreation!  
Location: Just 5 miles from town – easy access to all amenities.

Discover this versatile 80-acre property, perfectly blending productive farmland and serene woodland, offering endless possibilities for farming, hunting, and outdoor recreation. The property features about 35 acres of high-quality tillable land, currently planted in corn, providing excellent soil for continued farming or an ideal spot for future crop rotation. The remaining 45+/- acres are a mix of mature woods and lowland areas, creating the perfect habitat for wildlife. Whether you're an avid hunter or just appreciate the tranquility of nature, this property has it all. A few Established trails run through the property, providing easy access to prime hunting spots. Several locations are ideal for setting up deer stands and food plots, making it ready to enjoy from day one. Whether you're looking to expand your farming operation, create the perfect hunting retreat, or building your dream home, this property offers the space and versatility to make your dreams a reality!

**Additional Details:**

Lot Acres	80
Lot Dimensions	2618x1320
School District	818
Taxes	\$1
Taxes with Assessments	\$1
Tax Year	2025

**Additional Features:**

**Driving Directions:**

East out of wadena on county road 4, property is on your left.



Listed By:  
Hinkle Realty

Affinity Real Estate Inc. participates in the Regional Multiple Listing Service of Minnesota, Inc Broker Reciprocity (sm) program, allowing us to display other broker's listings on our website. All properties are subject to prior sale, change or withdrawal.



**Call Affinity Real Estate**

**218-237-3333**

**info@affinityrealestate.com**



**Affinity Real Estate - 600 Park Avenue South - Park Rapids MN 56470**





website: [www.AffinityRealEstate.com](http://www.AffinityRealEstate.com) | email: [info@affinityrealestate.com](mailto:info@affinityrealestate.com) | office: 218-237-3333 | fax: 218-237-3377

**Affinity**  
REAL ESTATE INC

**\$274,900**  
MLS 6793500 Land  
TBD 150th Street  
Verndale MN 56481



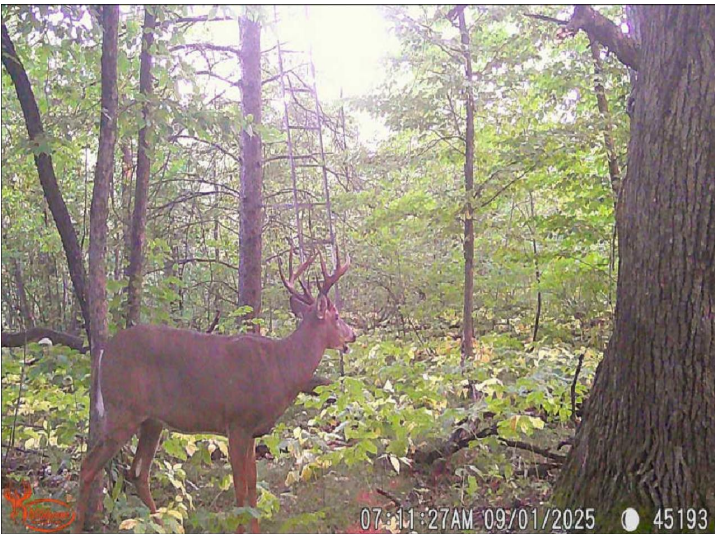
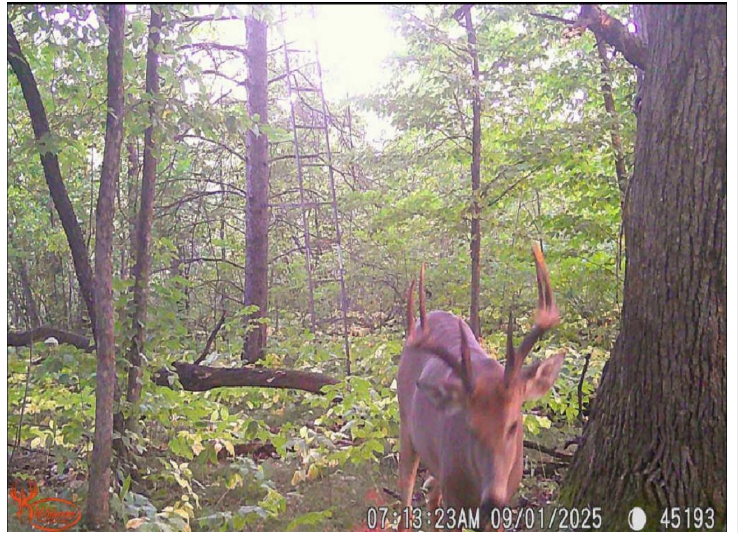


website: [www.AffinityRealEstate.com](http://www.AffinityRealEstate.com) | email: [info@affinityrealestate.com](mailto:info@affinityrealestate.com) | office: 218-237-3333 | fax: 218-237-3377



**\$274,900**  
MLS 6793500 Land  
TBD 150th Street  
Verndale MN 56481





website: [www.AffinityRealEstate.com](http://www.AffinityRealEstate.com) | email: [info@affinityrealestate.com](mailto:info@affinityrealestate.com) | office: 218-237-3333 | fax: 218-237-3377

**Affinity**  
REAL ESTATE INC

**\$274,900**  
MLS 6793500 Land  
TBD 150th Street  
Verndale MN 56481





website: [www.AffinityRealEstate.com](http://www.AffinityRealEstate.com) | email: [info@affinityrealestate.com](mailto:info@affinityrealestate.com) | office: 218-237-3333 | fax: 218-237-3377



**\$274,900**  
MLS 6793500 Land  
TBD 150th Street  
Verndale MN 56481





website: [www.AffinityRealEstate.com](http://www.AffinityRealEstate.com) | email: [info@affinityrealestate.com](mailto:info@affinityrealestate.com) | office: 218-237-3333 | fax: 218-237-3377



**\$274,900**  
 MLS 6793500 Land  
 TBD 150th Street  
 Verndale MN 56481





website: [www.AffinityRealEstate.com](http://www.AffinityRealEstate.com) | email: [info@affinityrealestate.com](mailto:info@affinityrealestate.com) | office: 218-237-3333 | fax: 218-237-3377



**\$274,900**  
MLS 6793500 Land  
TBD 150th Street  
Verndale MN 56481





website: [www.AffinityRealEstate.com](http://www.AffinityRealEstate.com) | email: [info@affinityrealestate.com](mailto:info@affinityrealestate.com) | office: 218-237-3333 | fax:218-237-3377



**\$274,900**  
MLS 6793500 Land  
TBD 150th Street  
Verndale MN 56481