



MLS 6793722 Residential

**\$259,900**

1,982 sq ft  
3 bedrooms  
1 baths

5102 Deerwood Lane  
Bemidji MN 56601

Status: Active

**Description:**

Tucked away at the end of a quiet road, this charming 3 bedroom, 1 bath home offers the perfect blend of privacy and convenience. Bordering State Park Land on two sides, you'll enjoy peaceful surroundings with direct access to nature right out your back door.

The home features nearly 2,000 sq. ft. of living space, including a partially finished basement that provides additional room. Recent updates include brand new black Andersen windows throughout, adding efficiency and modern curb appeal. Inside, you'll find a cozy living room with beamed ceilings, a bright kitchen with updated cabinetry, and multiple gathering spaces both upstairs and down.

Set on a spacious 1.2-acre lot, this property also includes a 2-car detached garage, central A/C, and a fuel oil forced-air furnace. Whether you're enjoying hosting on the patio, or exploring the nearby State Land, this property offers a rare combination of comfort, space, and privacy.

**Additional Details:**

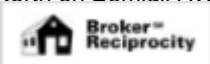
Year Built	1973
Lot Acres	1.27
Lot Dimensions	275x210
Garage Stalls	2
School District	31
Taxes	\$1,818
Taxes with Assessments	\$1,818
Tax Year	2025

**Additional Features:**

**Basement:** Partially Finished **Fuel:** Oil **Garage:** 2 **Heat:** Forced Air **Sewer:** Private Sewer **Water:** Submersible - 4 Inch, Private, Well **Air Conditioning:** Central Air

**Driving Directions:**

North on Bemidji Ave, East on Birchmont Beach Dr NW, North on Highway 100, East on Deerwood Lane to the end



Listed By:  
Real Broker, LLC

Affinity Real Estate Inc. participates in the Regional Multiple Listing Service of Minnesota, Inc Broker Reciprocity (sm) program, allowing us to display other broker's listings on our website. All properties are subject to prior sale, change or withdrawal.



Call Affinity Real Estate

**218-237-3333**

[info@affinityrealestate.com](mailto:info@affinityrealestate.com)



Affinity Real Estate - 600 Park Avenue South - Park Rapids MN 56470





website: [www.AffinityRealEstate.com](http://www.AffinityRealEstate.com) | email: [info@affinityrealestate.com](mailto:info@affinityrealestate.com) | office: 218-237-3333 | fax: 218-237-3377

**Affinity**  
REAL ESTATE INC

**\$259,900**  
MLS 6793722 Residential  
5102 Deerwood Lane  
Bemidji MN 56601





website: [www.AffinityRealEstate.com](http://www.AffinityRealEstate.com) | email: [info@affinityrealestate.com](mailto:info@affinityrealestate.com) | office: 218-237-3333 | fax: 218-237-3377

**Affinity**  
REAL ESTATE INC

**\$259,900**  
MLS 6793722 Residential  
5102 Deerwood Lane  
Bemidji MN 56601



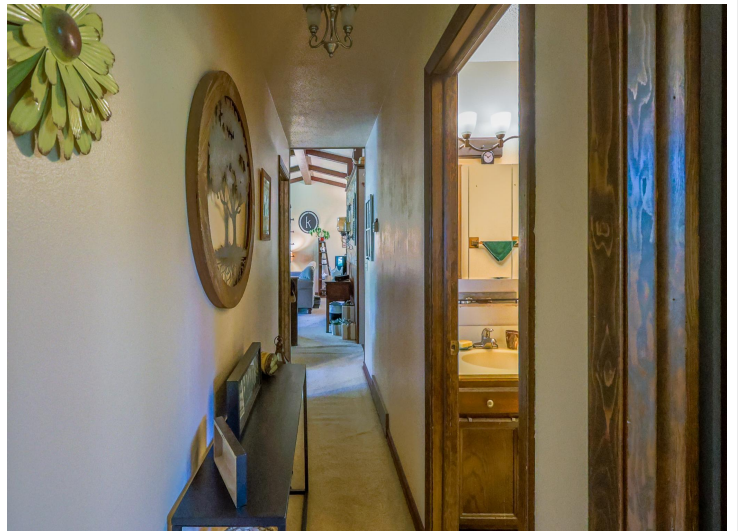


website: [www.AffinityRealEstate.com](http://www.AffinityRealEstate.com) | email: [info@affinityrealestate.com](mailto:info@affinityrealestate.com) | office: 218-237-3333 | fax: 218-237-3377

**Affinity**  
REAL ESTATE INC

**\$259,900**  
MLS 6793722 Residential  
5102 Deerwood Lane  
Bemidji MN 56601





website: [www.AffinityRealEstate.com](http://www.AffinityRealEstate.com) | email: [info@affinityrealestate.com](mailto:info@affinityrealestate.com) | office: 218-237-3333 | fax: 218-237-3377

**Affinity**  
REAL ESTATE INC

**\$259,900**  
MLS 6793722 Residential  
5102 Deerwood Lane  
Bemidji MN 56601





website: [www.AffinityRealEstate.com](http://www.AffinityRealEstate.com) | email: [info@affinityrealestate.com](mailto:info@affinityrealestate.com) | office: 218-237-3333 | fax: 218-237-3377

**Affinity**  
REAL ESTATE INC

**\$259,900**  
MLS 6793722 Residential  
5102 Deerwood Lane  
Bemidji MN 56601



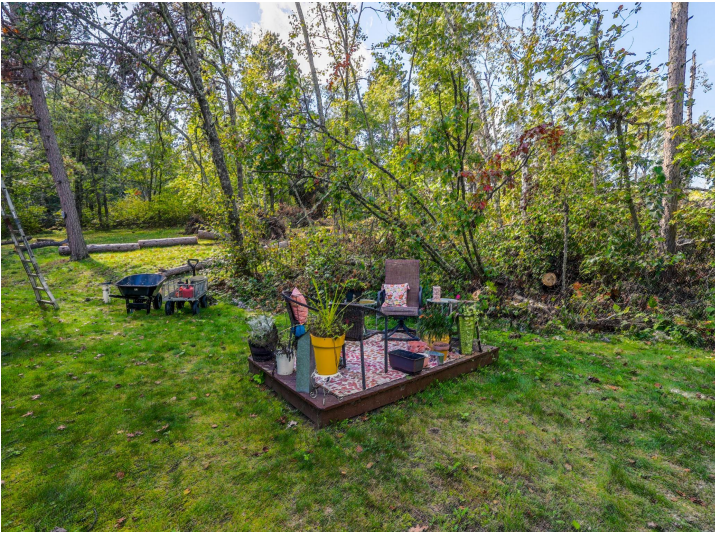


website: [www.AffinityRealEstate.com](http://www.AffinityRealEstate.com) | email: [info@affinityrealestate.com](mailto:info@affinityrealestate.com) | office: 218-237-3333 | fax: 218-237-3377



**\$259,900**  
 MLS 6793722 Residential  
 5102 Deerwood Lane  
 Bemidji MN 56601





website: [www.AffinityRealEstate.com](http://www.AffinityRealEstate.com) | email: [info@affinityrealestate.com](mailto:info@affinityrealestate.com) | office: 218-237-3333 | fax: 218-237-3377

**Affinity**  
REAL ESTATE INC

**\$259,900**  
MLS 6793722 Residential  
5102 Deerwood Lane  
Bemidji MN 56601



website: [www.AffinityRealEstate.com](http://www.AffinityRealEstate.com) | email: [info@affinityrealestate.com](mailto:info@affinityrealestate.com) | office: 218-237-3333 | fax:218-237-3377



**\$259,900**

MLS 6793722 Residential  
5102 Deerwood Lane  
Bemidji MN 56601



website: [www.AffinityRealEstate.com](http://www.AffinityRealEstate.com) | email: [info@affinityrealestate.com](mailto:info@affinityrealestate.com) | office: 218-237-3333 | fax:218-237-3377



**\$259,900**

MLS 6793722 Residential  
5102 Deerwood Lane  
Bemidji MN 56601



website: [www.AffinityRealEstate.com](http://www.AffinityRealEstate.com) | email: [info@affinityrealestate.com](mailto:info@affinityrealestate.com) | office: 218-237-3333 | fax:218-237-3377



**\$259,900**

MLS 6793722 Residential  
5102 Deerwood Lane  
Bemidji MN 56601