



MLS 6793777 Land

\$29,900

0.97 Acres
Raw Land

TBD White Overlook Drive
Breezy Point MN 56472

Status: Active

Description:

This is a fantastic opportunity to purchase two consecutive lots in Breezy Point. Build on one large combined lot or develop each lot separately. Located in a quiet, wooded setting, the property offers privacy while still being close to local schools, a medical clinic, dining, and shopping. Enjoy easy access to world-class golfing, fishing, hunting, and lake recreation. This is an excellent opportunity to build your weekend getaway or permanent residence in the beautiful Lakes Area.

Additional Details:

Lot Acres	0.97
Lot Dimensions	201x216
School District	909
Taxes	\$88
Taxes with Assessments	\$88
Tax Year	2025

Additional Features:

Driving Directions:

Hwy 11 to North on Ranchette. Left on white overlook and property is on the right side of the road.



Listed By:
eXp Realty

Affinity Real Estate Inc. participates in the Regional Multiple Listing Service of Minnesota, Inc Broker Reciprocity (sm) program, allowing us to display other broker's listings on our website. All properties are subject to prior sale, change or withdrawal.



Call Affinity Real Estate

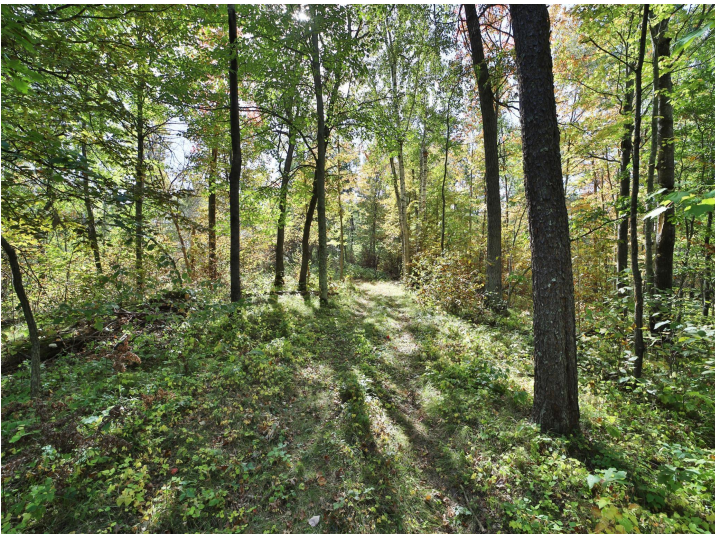
218-237-3333

info@affinityrealestate.com

MLS



Affinity Real Estate - 600 Park Avenue South - Park Rapids MN 56470



website: www.AffinityRealEstate.com | email: info@affinityrealestate.com | office: 218-237-3333 | fax: 218-237-3377



\$29,900
MLS 6793777 Land
TBD White Overlook Drive
Breezy Point MN 56472



website: www.AffinityRealEstate.com | email: info@affinityrealestate.com | office: 218-237-3333 | fax: 218-237-3377



\$29,900
MLS 6793777 Land
TBD White Overlook Drive
Breezy Point MN 56472



website: www.AffinityRealEstate.com | email: info@affinityrealestate.com | office: 218-237-3333 | fax:218-237-3377



\$29,900

MLS 6793777 Land
TBD White Overlook Drive
Breezy Point MN 56472