



MLS 6793785 Land

**\$165,000**

40 Acres  
Raw Land

TBD County Road 136  
Fifty Lakes MN 56448

Status: Active

**Description:**

This 40 acre parcel features gently rolling terrain, trails, and a scenic pond. Excellent location just North of Fifty Lakes, MN. Great place to build your rural homestead or simply use it for hunting and recreation. Enjoy an easy start to your project with the existing driveway access from a paved County road.

**Additional Details:**

|                        |           |
|------------------------|-----------|
| Lot Acres              | 40        |
| Lot Dimensions         | 1320x1320 |
| School District        | 2174      |
| Taxes                  | \$642     |
| Taxes with Assessments | \$642     |
| Tax Year               | 2025      |

**Additional Features:**

**Driving Directions:**

From Fifty Lakes: Go East on County 1 to Left (North) on County 136. Property on Left at sign.



Listed By:  
Lake Country Properties

Affinity Real Estate Inc. participates in the Regional Multiple Listing Service of Minnesota, Inc Broker Reciprocity (sm) program, allowing us to display other broker's listings on our website. All properties are subject to prior sale, change or withdrawal.



**Call Affinity Real Estate**

**218-237-3333**

**info@affinityrealestate.com**



**Affinity Real Estate - 600 Park Avenue South - Park Rapids MN 56470**



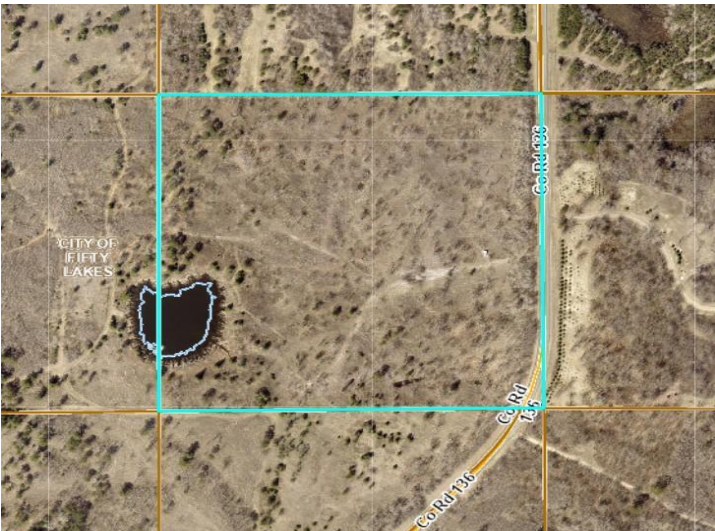


website: [www.AffinityRealEstate.com](http://www.AffinityRealEstate.com) | email: [info@affinityrealestate.com](mailto:info@affinityrealestate.com) | office: 218-237-3333 | fax: 218-237-3377



**\$165,000**  
 MLS 6793785 Land  
 TBD County Road 136  
 Fifty Lakes MN 56448





website: [www.AffinityRealEstate.com](http://www.AffinityRealEstate.com) | email: [info@affinityrealestate.com](mailto:info@affinityrealestate.com) | office: 218-237-3333 | fax: 218-237-3377



**\$165,000**  
 MLS 6793785 Land  
 TBD County Road 136  
 Fifty Lakes MN 56448