



MLS 6793897 Residential

\$319,900

1,280 sq ft
2 bedrooms
2 baths

1615 30th Street
Bemidji MN 56601

Status: Pending

Description:

Charming 2 Bed, 2 Bath Townhome in Northridge Cottages

Welcome to this beautifully maintained townhome located in the highly desirable Northridge Cottages community! This spacious 2-bedroom, 2-bathroom home features an open-concept layout with generously sized rooms and modern finishes throughout.

The kitchen offers stainless steel appliances, a large center island, and ample cabinet space. The bright and airy living area flows seamlessly to the private back patio, perfect for relaxing or hosting guests. The primary suite offers a true retreat with a large walk-in closet and a convenient on-suite washer and dryer. The double attached heated garage is located just off the large entry.

Residents of Northridge Cottages enjoy access to a community room and benefit from low-maintenance living with lawn care, snow removal, and exterior upkeep all included in the association fee.

Located in a convenient area close to shopping, dining, and local amenities, this home offers both comfort and lifestyle.

Additional Details:

Year Built	2023
Lot Acres	0.04
Lot Dimensions	42x45
Garage Stalls	2
School District	1386
Taxes	\$3,068
Taxes with Assessments	\$3,244
Tax Year	2025

Additional Features:

Basement: None **Fuel:** Array **Garage:** 2 **Heat:** Forced Air **Sewer:** City Sewer/Connected **Water:** City Water/Connected **Air Conditioning:** Ductless Mini-Split



Listed By:
218 Real Estate

1615 30th St, Right into North Ridge Cottages. House on right, not look for sign.

Affinity Real Estate Inc. participates in the Regional Multiple Listing Service of Minnesota, Inc Broker Reciprocity (sm) program, allowing us to display other broker's listings on our website. All properties are subject to prior sale, change or withdrawal.



Call Affinity Real Estate

218-237-3333

info@affinityrealestate.com



Affinity Real Estate - 600 Park Avenue South - Park Rapids MN 56470



website: www.AffinityRealEstate.com | email: info@affinityrealestate.com | office: 218-237-3333 | fax: 218-237-3377

Affinity
REAL ESTATE INC

\$319,900
MLS 6793897 Residential
1615 30th Street
Bemidji MN 56601



website: www.AffinityRealEstate.com | email: info@affinityrealestate.com | office: 218-237-3333 | fax: 218-237-3377

Affinity
REAL ESTATE INC

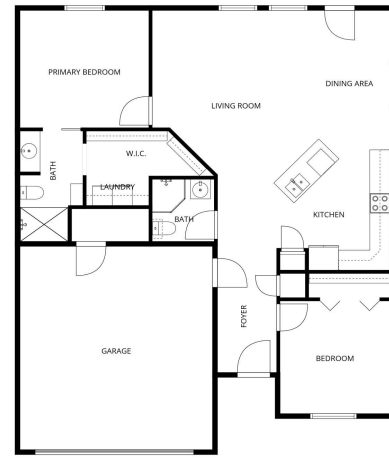
\$319,900
MLS 6793897 Residential
1615 30th Street
Bemidji MN 56601



website: www.AffinityRealEstate.com | email: info@affinityrealestate.com | office: 218-237-3333 | fax: 218-237-3377

Affinity
REAL ESTATE INC

\$319,900
MLS 6793897 Residential
1615 30th Street
Bemidji MN 56601



FLOOR PLAN CREATED BY CUBICASA APP. MEASUREMENTS DEEMED HIGHLY RELIABLE BUT NOT GUARANTEED.

website: www.AffinityRealEstate.com | email: info@affinityrealestate.com | office: 218-237-3333 | fax: 218-237-3377



\$319,900
MLS 6793897 Residential
1615 30th Street
Bemidji MN 56601