



MLS 6793975 Land

\$47,900

1.3 Acres
Finished Lot(s)

Lot 14 Fairway Trail
Park Rapids MN 56470

Status: Active

Description:

1.3 Acre building lot. Just 2 miles North of Park Rapids, just a short walk from the Heartland Trail and within golf cart distance to Headwaters Gold Course. An ideal location. The lot is cleared, driveway, and electrical is in. 200 amp electrical panel in place with outlets installed along with a "pass through" so service can easily be installed for a home or garage from the panel. An excellent home site, that's ready to build on, in a very nice development. A great country feel just minutes from downtown Park Rapids.

Additional Details:

Lot Acres	1.3
Lot Dimensions	200x350
School District	309
Taxes	\$76
Taxes with Assessments	\$76
Tax Year	2025

Additional Features:

Driving Directions:

From Park Rapids: Head East on 34, take a left on County Rd 1 to 230th Street. Right on Fairway Trail. Property is the 3rd lot on the right.



Listed By:
Coldwell Banker Crown Realtors

Affinity Real Estate Inc. participates in the Regional Multiple Listing Service of Minnesota, Inc Broker Reciprocity (sm) program, allowing us to display other broker's listings on our website. All properties are subject to prior sale, change or withdrawal.



Call Affinity Real Estate

218-237-3333

info@affinityrealestate.com



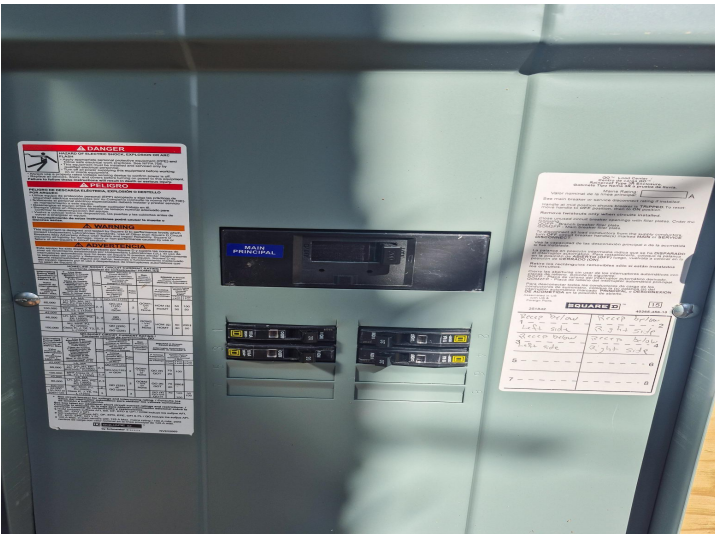
Affinity Real Estate - 600 Park Avenue South - Park Rapids MN 56470



website: www.AffinityRealEstate.com | email: info@affinityrealestate.com | office: 218-237-3333 | fax: 218-237-3377



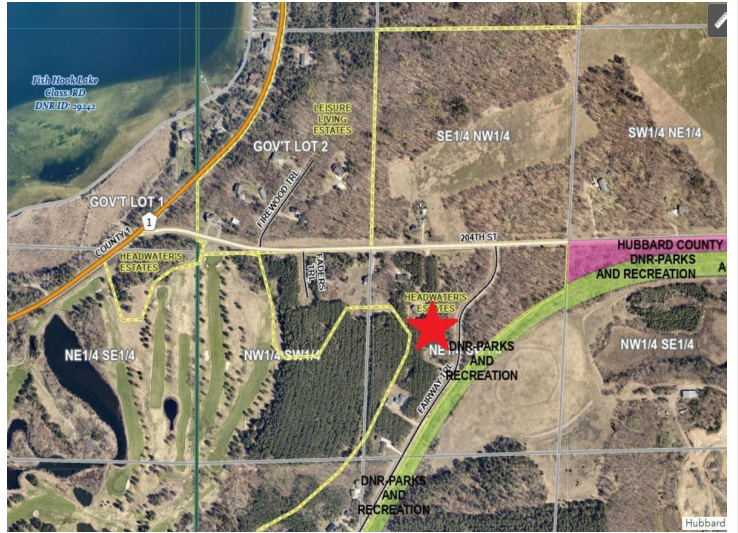
\$47,900
 MLS 6793975 Land
 Lot 14 Fairway Trail
 Park Rapids MN 56470



website: www.AffinityRealEstate.com | email: info@affinityrealestate.com | office: 218-237-3333 | fax: 218-237-3377



\$47,900
 MLS 6793975 Land
 Lot 14 Fairway Trail
 Park Rapids MN 56470



website: www.AffinityRealEstate.com | email: info@affinityrealestate.com | office: 218-237-3333 | fax: 218-237-3377



\$47,900
 MLS 6793975 Land
 Lot 14 Fairway Trail
 Park Rapids MN 56470