



MLS 6794255 Land

\$125,000

26.06 Acres
Raw Land

TBD County Road 2
Brainerd MN 56401

Status: Active

Description:

Great opportunity to use this property for recreational use or build your dream home or cabin here!! This property features 26.06 acres of land, paved road access, great mix of trees, located 20 minutes from Brainerd, 15 minutes to Mille Lacs Lake, 20-25 minutes to the Casino and close to ATV/snowmobile trails!! Don't miss out on this great opportunity!!!

Additional Details:

Lot Acres	26.06
Lot Dimensions	See aerial map
School District	181
Taxes	\$690
Taxes with Assessments	\$690
Tax Year	2025

Additional Features:

Driving Directions:

From the intersection of State Hwy 18 and Hwy 25 go South on State 25 to a left onto County Road 2 and follow for about 4.5 miles to the sign on the right.



Listed By:
Edina Realty, Inc.

Affinity Real Estate Inc. participates in the Regional Multiple Listing Service of Minnesota, Inc Broker Reciprocity (sm) program, allowing us to display other broker's listings on our website. All properties are subject to prior sale, change or withdrawal.



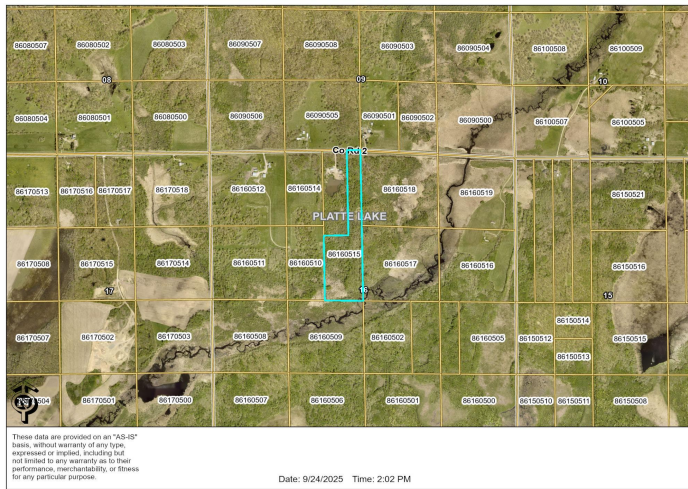
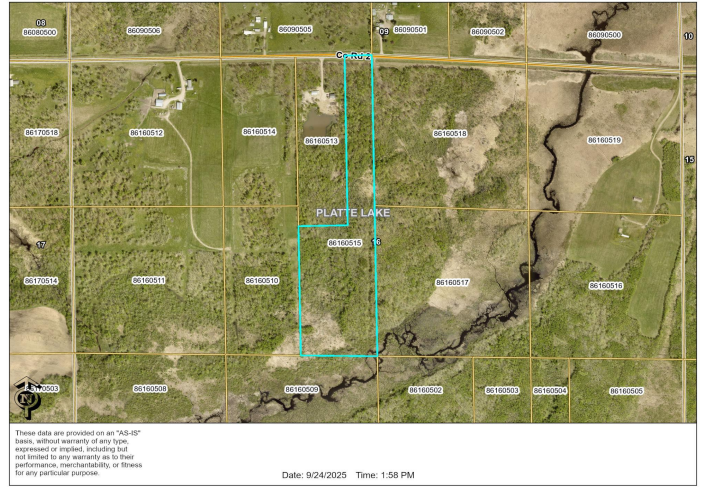
Call Affinity Real Estate

218-237-3333

info@affinityrealestate.com



Affinity Real Estate - 600 Park Avenue South - Park Rapids MN 56470



website: www.AffinityRealEstate.com | email: info@affinityrealestate.com | office: 218-237-3333 | fax: 218-237-3377



\$125,000
 MLS 6794255 Land
 TBD County Road 2
 Brainerd MN 56401



website: www.AffinityRealEstate.com | email: info@affinityrealestate.com | office: 218-237-3333 | fax:218-237-3377



\$125,000
MLS 6794255 Land
TBD County Road 2
Brainerd MN 56401

website: www.AffinityRealEstate.com | email: info@affinityrealestate.com | office: 218-237-3333 | fax:218-237-3377



\$125,000

MLS 6794255 Land
TBD County Road 2
Brainerd MN 56401

website: www.AffinityRealEstate.com | email: info@affinityrealestate.com | office: 218-237-3333 | fax:218-237-3377



\$125,000

MLS 6794255 Land
TBD County Road 2
Brainerd MN 56401