



MLS 6794516 Residential

**\$379,900**

3,072 sq ft  
3 bedrooms  
2 baths

10449 State 113  
Park Rapids MN 56470

Status: Active

#### Description:

Charming Log Home near Itasca State Park nestled among towering pines on 37 acres and just minutes away from the HeadWaters of the Mississippi River at Itasca State Park! This stunning property combines rustic charm with modern convenience, featuring 3 bedrooms and 2 Bathrooms and two kitchens! Step outside to the covered porch and back deck, where you can soak up breathtaking views and savor the tranquility of nature. The walkout basement provides additional space for relaxation or recreation, offering endless possibilities for gatherings or fun-filled weekends. With a fire tower on the property, you can enjoy panoramic views of the area and take in the beauty of your surroundings. A pole building shop with a convenient lean-to offers ample storage for all your outdoor gear and toys, ensuring you're always ready for your next adventure. In addition is a small seasonal cabin being used as a workshop but could be updated to use as you see fit! Don't miss this exceptional opportunity! Schedule a viewing today!

#### Additional Details:

Year Built	1997
Lot Acres	37.8
Lot Dimensions	Irregular
Garage Stalls	2
School District	309
Taxes	\$1,451
Taxes with Assessments	\$1,672
Tax Year	2025

#### Additional Features:

**Basement:** Finished, Full, Concrete, Walkout **Fuel:** Propane, Wood **Garage:** 2 **Heat:** Baseboard, Boiler **Sewer:** Private Sewer, Tank with Drainage Field **Water:** Submersible - 4 Inch, Drilled, Private **Air Conditioning:** None

#### Driving Directions:

From Park Rapids travel north on highway 71, take a left onto State 113 property on left.



Listed By:  
Wolff & Simon Real Estate

Affinity Real Estate Inc. participates in the Regional Multiple Listing Service of Minnesota, Inc Broker Reciprocity (sm) program, allowing us to display other broker's listings on our website. All properties are subject to prior sale, change or withdrawal.



Call Affinity Real Estate

**218-237-3333**

[info@affinityrealestate.com](mailto:info@affinityrealestate.com)



Affinity Real Estate - 600 Park Avenue South - Park Rapids MN 56470





website: [www.AffinityRealEstate.com](http://www.AffinityRealEstate.com) | email: [info@affinityrealestate.com](mailto:info@affinityrealestate.com) | office: 218-237-3333 | fax: 218-237-3377

**Affinity**  
REAL ESTATE INC

**\$379,900**  
MLS 6794516 Residential  
10449 State 113  
Park Rapids MN 56470





website: [www.AffinityRealEstate.com](http://www.AffinityRealEstate.com) | email: [info@affinityrealestate.com](mailto:info@affinityrealestate.com) | office: 218-237-3333 | fax: 218-237-3377

**Affinity**  
REAL ESTATE INC

**\$379,900**  
MLS 6794516 Residential  
10449 State 113  
Park Rapids MN 56470





website: [www.AffinityRealEstate.com](http://www.AffinityRealEstate.com) | email: [info@affinityrealestate.com](mailto:info@affinityrealestate.com) | office: 218-237-3333 | fax: 218-237-3377

**Affinity**  
REAL ESTATE INC

**\$379,900**  
MLS 6794516 Residential  
10449 State 113  
Park Rapids MN 56470





website: [www.AffinityRealEstate.com](http://www.AffinityRealEstate.com) | email: [info@affinityrealestate.com](mailto:info@affinityrealestate.com) | office: 218-237-3333 | fax: 218-237-3377

**Affinity**  
REAL ESTATE INC

**\$379,900**  
MLS 6794516 Residential  
10449 State 113  
Park Rapids MN 56470





website: [www.AffinityRealEstate.com](http://www.AffinityRealEstate.com) | email: [info@affinityrealestate.com](mailto:info@affinityrealestate.com) | office: 218-237-3333 | fax: 218-237-3377

**Affinity**  
REAL ESTATE INC

**\$379,900**  
MLS 6794516 Residential  
10449 State 113  
Park Rapids MN 56470





website: [www.AffinityRealEstate.com](http://www.AffinityRealEstate.com) | email: [info@affinityrealestate.com](mailto:info@affinityrealestate.com) | office: 218-237-3333 | fax: 218-237-3377



**\$379,900**  
 MLS 6794516 Residential  
 10449 State 113  
 Park Rapids MN 56470



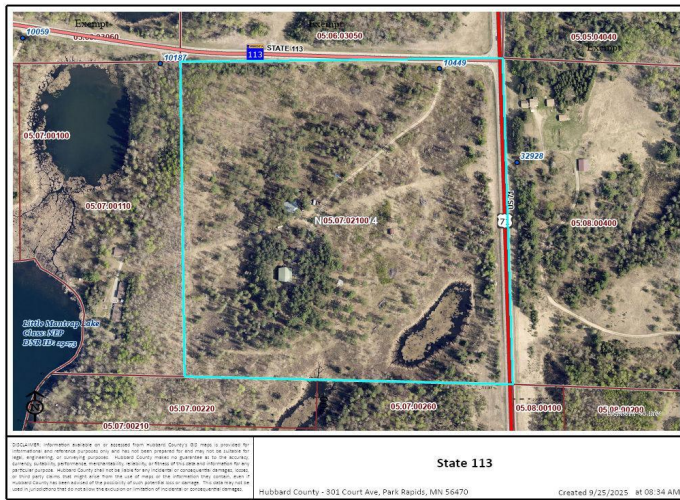


website: [www.AffinityRealEstate.com](http://www.AffinityRealEstate.com) | email: [info@affinityrealestate.com](mailto:info@affinityrealestate.com) | office: 218-237-3333 | fax: 218-237-3377

**Affinity**  
REAL ESTATE INC

**\$379,900**  
MLS 6794516 Residential  
10449 State 113  
Park Rapids MN 56470





website: [www.AffinityRealEstate.com](http://www.AffinityRealEstate.com) | email: [info@affinityrealestate.com](mailto:info@affinityrealestate.com) | office: 218-237-3333 | fax: 218-237-3377



**\$379,900**  
 MLS 6794516 Residential  
 10449 State 113  
 Park Rapids MN 56470