



MLS 6795163 Land

\$24,900

3.01 Acres
Raw Land

36101 Pincherry RD
Cohasset MN 55721

Status: Active

Description:

Nice level 3 acre lot just outside of Cohasset, perfect for a storage building or a nice spot centrally located to many lakes and amenities. Good location to park your camper or fish house when heading to many different trails or lakes. Definitely worth a look!

Additional Details:

Lot Acres	3.01
Lot Dimensions	Irreg
School District	318
Taxes	\$218
Taxes with Assessments	\$218
Tax Year	2024

Additional Features:

Driving Directions:

Hwy 2 West through Cohasset, Right on Pincherry Road to property on Left. Park across the street at the sub station.



Listed By:
COLDWELL BANKER NORTHWOODS

Affinity Real Estate Inc. participates in the Regional Multiple Listing Service of Minnesota, Inc Broker Reciprocity (sm) program, allowing us to display other broker's listings on our website. All properties are subject to prior sale, change or withdrawal.



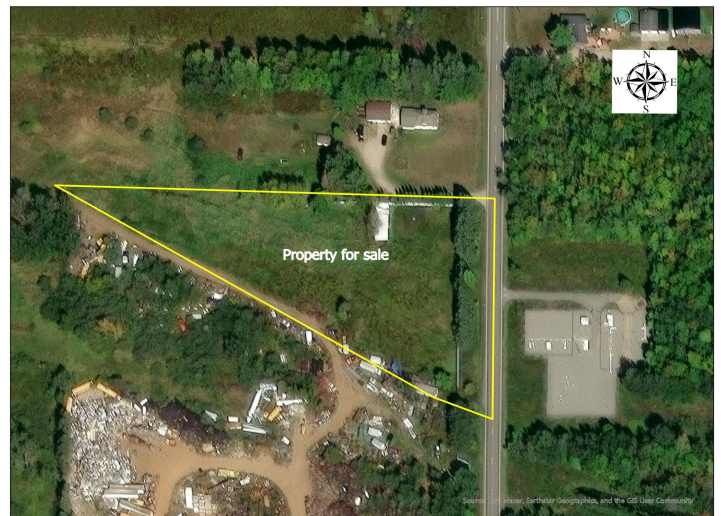
Call Affinity Real Estate

218-237-3333

info@affinityrealestate.com



Affinity Real Estate - 600 Park Avenue South - Park Rapids MN 56470



website: www.AffinityRealEstate.com | email: info@affinityrealestate.com | office: 218-237-3333 | fax: 218-237-3377



\$24,900

MLS 6795163 Land
36101 Pincherry RD
Cohasset MN 55721