



MLS 6795188 Lake Home

\$549,900

2,488 sq ft
2 bedrooms
2 baths

30579 County Road 19
Ashby MN 56309

Waterfront: Pelican

Status: Hold

Description:

Settle into lakeside living on Pelican Lake with this beautiful one level home and it's gradual walk down to the water. The vaulted knotty pine ceiling bring warmth to the open living room, dining, kitchen, and sunroom, where a gas fireplace adds an inviting touch. The gourmet kitchen features custom cabinets, granite counters, stainless appliances, slate backsplash, and an island that's perfect for gathering. The primary suite offers a walk-in closet and a spa-like bath with rain shower, sauna, and jetted tub, while the separate half bath adds convenience. A craft room doubles as a non-conforming bedroom, and the heated, finished garage makes every season easier. Outside, enjoy the composite deck, mature oaks, 150 feet of shoreline, and included dock. There's an additional detached heated/cooled room, and a 48x31 pole barn with concrete floor and covered overhang-ideal for storage, home-based business, hobbies, or lake toys.

Additional Details:

Year Built	2018
Lot Acres	0.98
Lot Dimensions	Irregular
Garage Stalls	2
School District	2908
Taxes	\$2,384
Taxes with Assessments	\$2,648
Tax Year	2025

Additional Features:

Basement: Crawl Space, Partial, Unfinished **Fuel:** Propane **Garage:** 2 **Heat:** Forced Air, Heat Pump **Sewer:** Private Sewer **Water:** Well **Air Conditioning:** Central Air

Driving Directions:

I-94 to Hwy 78, North to County Road 82, East to County Rd 19, South to home on right.



Listed By:
RE/MAX Professionals

Affinity Real Estate Inc. participates in the Regional Multiple Listing Service of Minnesota, Inc Broker Reciprocity (sm) program, allowing us to display other broker's listings on our website. All properties are subject to prior sale, change or withdrawal.



Call Affinity Real Estate

218-237-3333

info@affinityrealestate.com



Affinity Real Estate - 600 Park Avenue South - Park Rapids MN 56470



website: www.AffinityRealEstate.com | email: info@affinityrealestate.com | office: 218-237-3333 | fax: 218-237-3377

Affinity
REAL ESTATE INC

\$549,900
MLS 6795188 Lake Home
30579 County Road 19
Ashby MN 56309



website: www.AffinityRealEstate.com | email: info@affinityrealestate.com | office: 218-237-3333 | fax: 218-237-3377

Affinity
REAL ESTATE INC

\$549,900
MLS 6795188 Lake Home
30579 County Road 19
Ashby MN 56309



website: www.AffinityRealEstate.com | email: info@affinityrealestate.com | office: 218-237-3333 | fax:218-237-3377

Affinity
REAL ESTATE INC

\$549,900
MLS 6795188 Lake Home
30579 County Road 19
Ashby MN 56309



website: www.AffinityRealEstate.com | email: info@affinityrealestate.com | office: 218-237-3333 | fax: 218-237-3377

Affinity
REAL ESTATE INC

\$549,900
MLS 6795188 Lake Home
30579 County Road 19
Ashby MN 56309



website: www.AffinityRealEstate.com | email: info@affinityrealestate.com | office: 218-237-3333 | fax:218-237-3377

Affinity
REAL ESTATE INC

\$549,900
MLS 6795188 Lake Home
30579 County Road 19
Ashby MN 56309



website: www.AffinityRealEstate.com | email: info@affinityrealestate.com | office: 218-237-3333 | fax: 218-237-3377

Affinity
REAL ESTATE INC

\$549,900
MLS 6795188 Lake Home
30579 County Road 19
Ashby MN 56309



website: www.AffinityRealEstate.com | email: info@affinityrealestate.com | office: 218-237-3333 | fax:218-237-3377



\$549,900
MLS 6795188 Lake Home
30579 County Road 19
Ashby MN 56309



website: www.AffinityRealEstate.com | email: info@affinityrealestate.com | office: 218-237-3333 | fax:218-237-3377



\$549,900
MLS 6795188 Lake Home
30579 County Road 19
Ashby MN 56309



website: www.AffinityRealEstate.com | email: info@affinityrealestate.com | office: 218-237-3333 | fax: 218-237-3377

Affinity
REAL ESTATE INC

\$549,900
MLS 6795188 Lake Home
30579 County Road 19
Ashby MN 56309



website: www.AffinityRealEstate.com | email: info@affinityrealestate.com | office: 218-237-3333 | fax: 218-237-3377

Affinity
REAL ESTATE INC

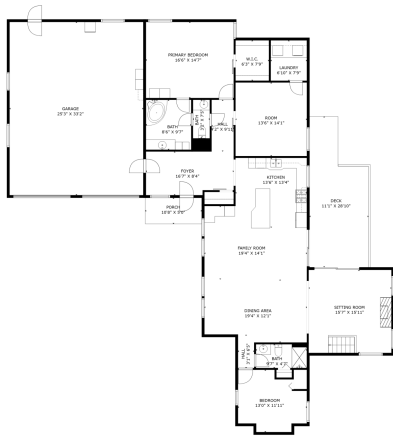
\$549,900
MLS 6795188 Lake Home
30579 County Road 19
Ashby MN 56309



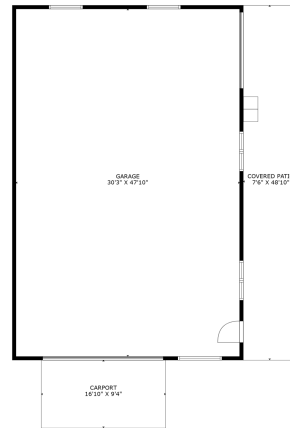
website: www.AffinityRealEstate.com | email: info@affinityrealestate.com | office: 218-237-3333 | fax:218-237-3377



\$549,900
MLS 6795188 Lake Home
30579 County Road 19
Ashby MN 56309



Total GLA: 3085 sq. ft. | Total: 5369 sq. ft.
 Floor 3 - Below grade: (Excluded areas 2086 sq. ft.)
 Floor 2: 2185 sq. ft. (Excluded areas 1286 sq. ft.)
 Measurements Deemed Highly Reliable But Not Guaranteed



Total GLA: 402 sq. ft. | Total: 2483 sq. ft.
 Floor 1: 402 sq. ft. (Excluded areas 2081 sq. ft.)
 Measurements Deemed Highly Reliable But Not Guaranteed



website: www.AffinityRealEstate.com | email: info@affinityrealestate.com | office: 218-237-3333 | fax: 218-237-3377



\$549,900
 MLS 6795188 Lake Home
 30579 County Road 19
 Ashby MN 56309