



MLS 6795216 Residential

\$344,900

2,588 sq ft
4 bedrooms
2 baths

17071 County Highway 35
Dalton MN 56324

Status: Active

Description:

Nestled on 8.6 beautifully wooded acres just 4.5 miles north of Dalton and 6.5 miles south of Underwood, this spacious country property offers the perfect blend of privacy, convenience, and versatility. Situated on a paved road, this home boasts 4 bedrooms, 2 bathrooms, and multiple living spaces designed to accommodate a variety of lifestyles. The main level features a kitchen, dining room, family room, and a large den that once served as a primary bedroom with access to the charming wrap-around porch. Down the hall, two additional bedrooms, a full bathroom, and a main-level laundry provide plenty of comfort and functionality. The lower level features a complete second living suite with its own kitchenette, living room, large bedroom with walk-in closet, oversized 3/4 bathroom and private laundry —ideal for guests, extended family, or even rental potential. In addition to the 2-stall 24 x 26 tuck-under garage - car enthusiasts, hobbyists, or anyone needing storage will love the outbuildings including a second detached 2-stall 20x23 garage, and a 24x30 shop with a concrete floor. Whether you're looking for multi-generational living, hobby farm potential, or a peaceful wooded retreat, this property delivers space, flexibility, and a highly desirable location.

Additional Details:

Year Built	1971
Lot Acres	8.6
Lot Dimensions	Irregular
Garage Stalls	5
School District	550
Taxes	\$2,035
Taxes with Assessments	\$2,120
Tax Year	2025

Additional Features:

Basement: Block, Drainage System, Egress Window(s), Finished, Full, Partially Finished, Storage Space, Sump Pump, Walkout **Fuel:** Propane
Garage: 5 **Heat:** Forced Air **Sewer:** Private Sewer, Tank with Drainage Field **Water:** Private, Well **Air Conditioning:** Central Air

Driving Directions:

From Underwood, South on County Road 35 for 6.5 miles, property will be on your right at the corner of Hwy 35 and Joten lake Road.



Listed By:
Andrew Yaggie Real Estate

Affinity Real Estate Inc. participates in the Regional Multiple Listing Service of Minnesota, Inc Broker Reciprocity (sm) program, allowing us to display other broker's listings on our website. All properties are subject to prior sale, change or withdrawal.



Call Affinity Real Estate

218-237-3333

info@affinityrealestate.com



Affinity Real Estate - 600 Park Avenue South - Park Rapids MN 56470



website: www.AffinityRealEstate.com | email: info@affinityrealestate.com | office: 218-237-3333 | fax: 218-237-3377



\$344,900
 MLS 6795216 Residential
 17071 County Highway 35
 Dalton MN 56324



website: www.AffinityRealEstate.com | email: info@affinityrealestate.com | office: 218-237-3333 | fax: 218-237-3377

Affinity
REAL ESTATE INC

\$344,900
MLS 6795216 Residential
17071 County Highway 35
Dalton MN 56324



website: www.AffinityRealEstate.com | email: info@affinityrealestate.com | office: 218-237-3333 | fax: 218-237-3377

Affinity
REAL ESTATE INC

\$344,900
MLS 6795216 Residential
17071 County Highway 35
Dalton MN 56324



website: www.AffinityRealEstate.com | email: info@affinityrealestate.com | office: 218-237-3333 | fax: 218-237-3377



\$344,900
 MLS 6795216 Residential
 17071 County Highway 35
 Dalton MN 56324



website: www.AffinityRealEstate.com | email: info@affinityrealestate.com | office: 218-237-3333 | fax: 218-237-3377



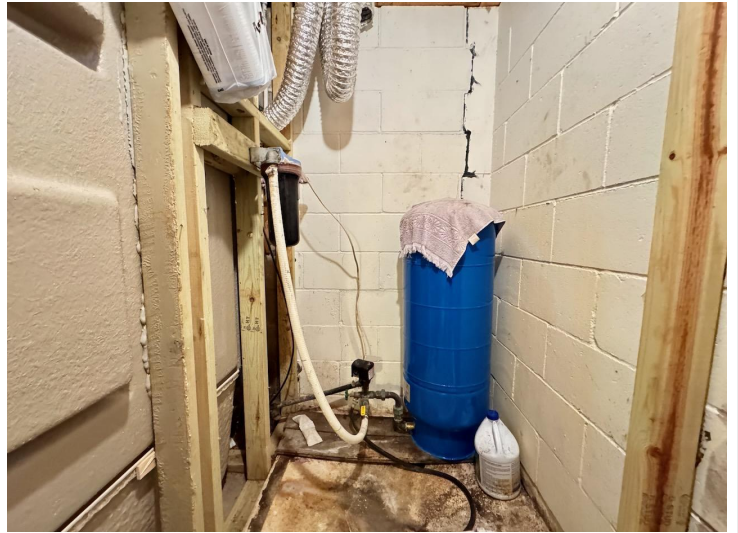
\$344,900
 MLS 6795216 Residential
 17071 County Highway 35
 Dalton MN 56324



website: www.AffinityRealEstate.com | email: info@affinityrealestate.com | office: 218-237-3333 | fax: 218-237-3377



\$344,900
 MLS 6795216 Residential
 17071 County Highway 35
 Dalton MN 56324



website: www.AffinityRealEstate.com | email: info@affinityrealestate.com | office: 218-237-3333 | fax: 218-237-3377

Affinity
REAL ESTATE INC

\$344,900
MLS 6795216 Residential
17071 County Highway 35
Dalton MN 56324



website: www.AffinityRealEstate.com | email: info@affinityrealestate.com | office: 218-237-3333 | fax: 218-237-3377



\$344,900
 MLS 6795216 Residential
 17071 County Highway 35
 Dalton MN 56324



website: www.AffinityRealEstate.com | email: info@affinityrealestate.com | office: 218-237-3333 | fax: 218-237-3377



\$344,900
 MLS 6795216 Residential
 17071 County Highway 35
 Dalton MN 56324



website: www.AffinityRealEstate.com | email: info@affinityrealestate.com | office: 218-237-3333 | fax: 218-237-3377



\$344,900

MLS 6795216 Residential
17071 County Highway 35
Dalton MN 56324



website: www.AffinityRealEstate.com | email: info@affinityrealestate.com | office: 218-237-3333 | fax:218-237-3377



\$344,900

MLS 6795216 Residential
17071 County Highway 35
Dalton MN 56324