



MLS 6795250 Lake Land

\$109,900

Description:

Amazing 12.2 gently rolling wooded acres offering views of Webb Lake all in a private setting. Webb Lake public access and beach nearby. Bring your building plans for that home or cabin and start making memories and enjoying the lakes area today!

Additional Details:

Lot Acres	12.2
Lot Dimensions	330x1611
School District	113
Taxes	\$252
Taxes with Assessments	\$252
Tax Year	2025

Additional Features:

Driving Directions:

East from Hackensack on County Rd 5 approx 6 miles to left on 23rd Ave/County 121 continue 1.1 miles to property & Siskin Trl on your left



Listed By:
Rusty's Up North Realty

Affinity Real Estate Inc. participates in the Regional Multiple Listing Service of Minnesota, Inc Broker Reciprocity (sm) program, allowing us to display other broker's listings on our website. All properties are subject to prior sale, change or withdrawal.



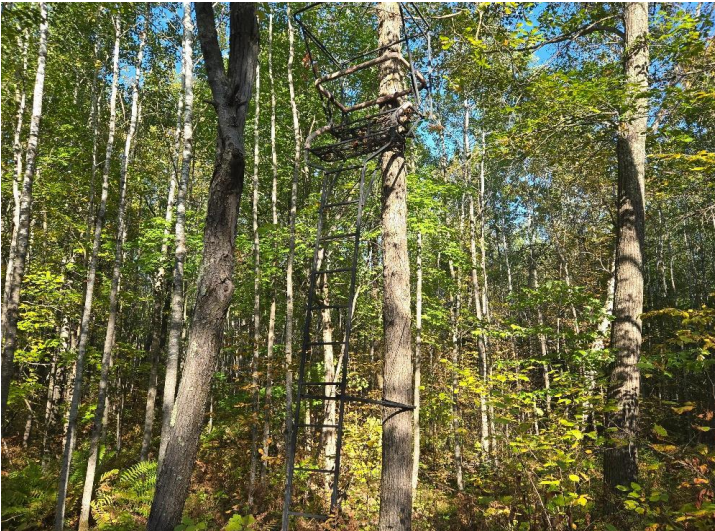
Call Affinity Real Estate

218-237-3333

info@affinityrealestate.com



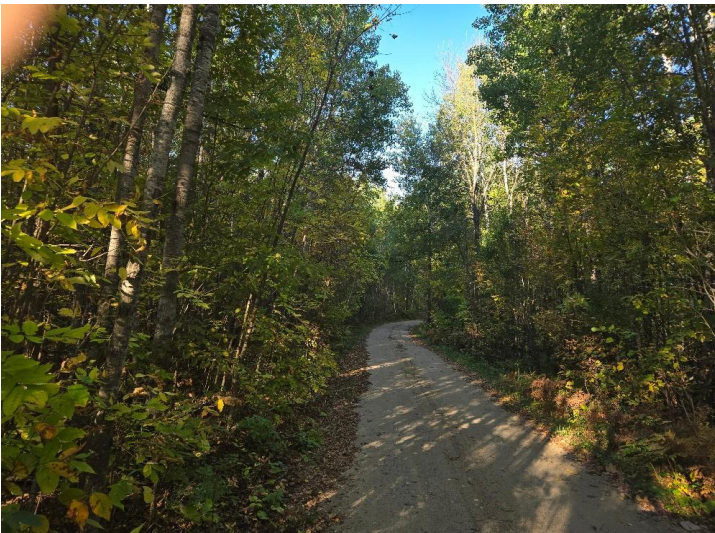
Affinity Real Estate - 600 Park Avenue South - Park Rapids MN 56470



website: www.AffinityRealEstate.com | email: info@affinityrealestate.com | office: 218-237-3333 | fax: 218-237-3377



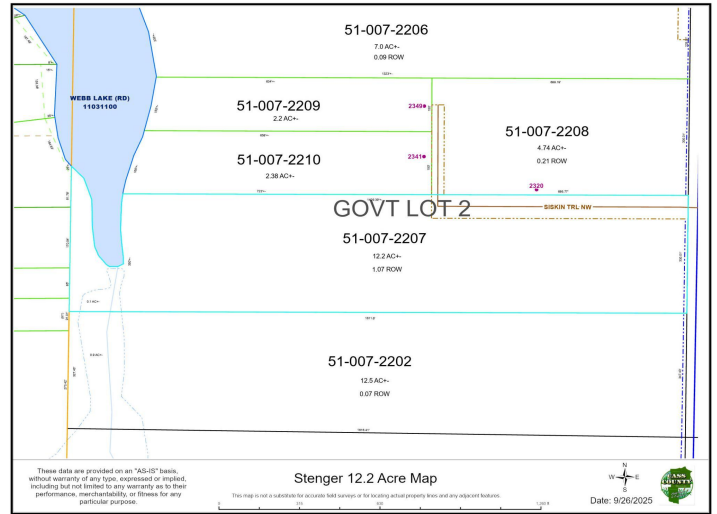
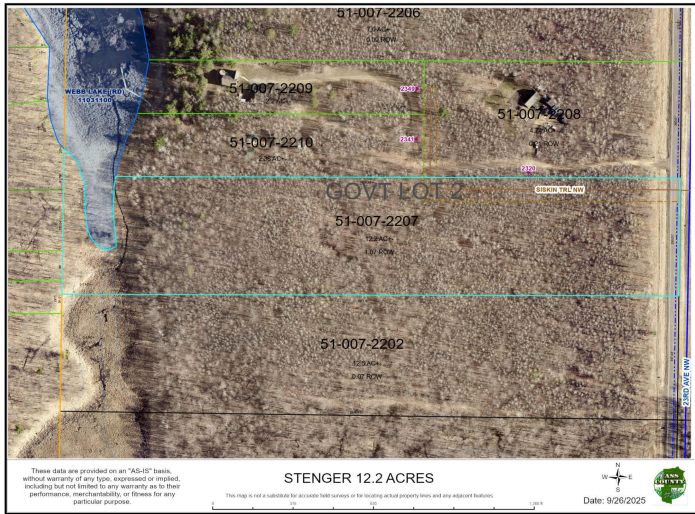
\$109,900
 MLS 6795250 Lake Land
 TBD Siskin Trail
 Hackensack MN 56452



website: www.AffinityRealEstate.com | email: info@affinityrealestate.com | office: 218-237-3333 | fax: 218-237-3377



\$109,900
 MLS 6795250 Lake Land
 TBD Siskin Trail
 Hackensack MN 56452



website: www.AffinityRealEstate.com | email: info@affinityrealestate.com | office: 218-237-3333 | fax: 218-237-3377



\$109,900
 MLS 6795250 Lake Land
 TBD Siskin Trail
 Hackensack MN 56452